

Champion®



CHAMPION FALL 2024 RESORT



CHAMPION

YOUR DESTINATION

Welcome to our *2024 Champion Resort* catalog designed to transport you to the picturesque paradise of *Folly Beach, South Carolina*. We present our inline collection featuring new *trend right* silhouettes alongside *core basics*, all complemented with a vast assortment of *custom made graphics*. Against the backdrop of Folly Beach's pristine sand and laid back surfer town, our photoshoot captured the essence of a relaxed vacation style where *every outfit tells a story*.



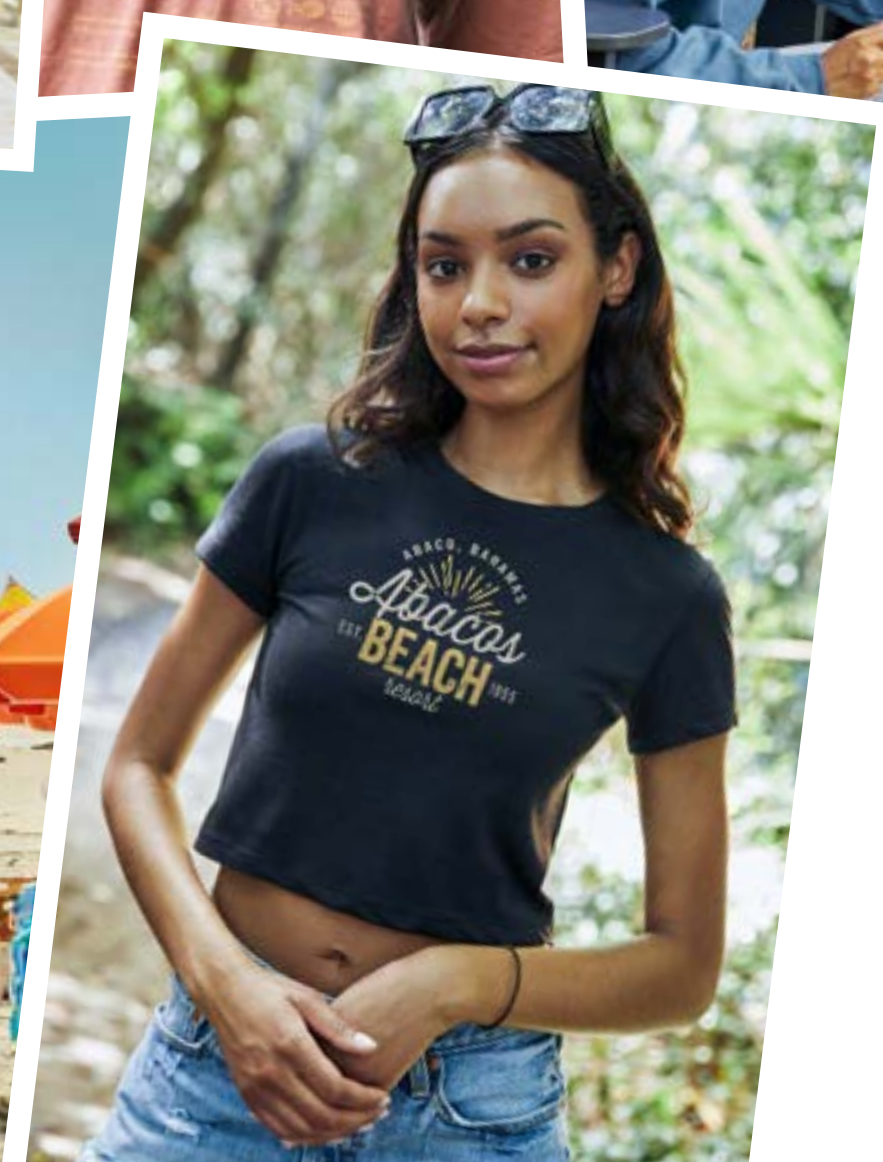
GET INSPIRED WITH CHAMPION

Let our *Champion Inline Assortment* be a canvas to promote *endless creativity*. Our Champion styles are your canvas, where *imagination meets customization*. Let the graphics come alive so you can *Champion your destination!*



CHAMPION

THE EXPERIENCE



CONTENTS

MEN'S COLLECTION	8
Powerblend	10
Core Tees & Shorts	20
Outerwear & Polo	28
Garment Dye	38
Reverse Weave	44
Triumph	50
WOMEN'S COLLECTION	56
Powerblend	58
Core Tees	68
Soft Touch	78
Reverse Weave	80
Triumph	84
YOUTH COLLECTION	90
COLOR GUIDE	98

MEN'S COLLECTION

	XS	S	M	L	XL	2XL
CHEST (IN)	30-32	32-34	36-38	40-42	44-46	48-50
WAIST (IN)	26-28	28-30	32-34	36-38	40-42	44-46



30 CB1012
Packable
Jacket



30 CB1015
Full Zip
Lightweight Jacket



31 CT3009
Men's Micro Mesh
1/4 Zip



31 CT3022
Men's Micro Mesh
Sport Polo



31 CT3012
Men's Textured
Solid Polo

▶▶ POWERBLEND



11 CS1220
Powerblend®
Crew



12 CS2071
Powerblend®
Hood



13 CS2083
Powerblend®
1/4 Zip

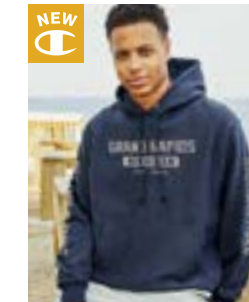


13 CS2072
Powerblend®
Full Zip



14 C82075
Powerblend®
7" Short

▶▶ GARMENT DYE



39 GD101C
Men's Garment Dyed
RW Hood



40 GD149C
Men's Garment Dyed
RW Crew



41 CD10C
Men's Garment Dyed
SS Tee



41 CD20C
Men's Garment Dyed
LS Tee



45 CS3050
Men's Reverse
Weave Crew

▶▶ REVERSE WEAVE

▶▶ CORE TEES & SHORTS



14 CP2071
Powerblend®
Banded Pant



15 CP2081
Powerblend® Open
Bottom Pant



15 CP2072
Powerblend®
Fleece Jogger Pant



22 CT1000
Jersey Short
Sleeve Tee



23 CT1730
Jersey Long
Sleeve Tee

▶▶ TRIUMPH



46 CS3051
Men's Reverse
Weave Hood



46 RW10C
Men's Reverse
Weave Sweatpant



47 CS3358
Men's Reverse Weave
Yarn Dye Rib Crew



47 CS3044
Men's Reverse Weave
Yarn Dye Rib Crew



51 CS0331
Men's Triumph Fleece
Raglan Crew

▶▶ OUTERWEAR & POLOS



24 C81255
Men's Classic
Mesh Short



25 C81001
Men's Woven
5" Short



25 CT1028
Men's Athletic Short
Sleeve Tee



29 CB1074
Men's Explorer Full
Zip Jacket



29 CB1075
Men's Heavyweight
Champion Jacket



51 CS0332
Men's Triumph Fleece
Raglan 1/2 Zip



52 CS0337
Men's Triumph
Fleece Hood



52 CP0333
Men's Triumph
Fleece Jogger



53 CP0225
Men's Tri-Blend
Long Sleeve Tee



53 CT1060
Men's Ultimate
Triblend Tee



▶▶ CHAMPION FALL 2024 RESORT APC03799620 P1 FC3 APC03799199 P1 FC2



MEN'S POWERBLEND



CHAMPION POWERBLEND® CREW

CS1220 | XS-3XL
 3XL AVAILABLE IN: 1818, 190, 256, 529, 539, 578, 930, 990, 999

- 50% Cotton / 50% Polyester powerblend fleece
- Classic fitting set-in sleeve silhouette
- Rib knit at neck, cuffs and waistband
- Authentic C Logo patch on left sleeve
- Art #: **APC03799065 P1 FC2**

 000 White	 1045 Blue Breeze	 1134 Denim Jacket Blue	 1616 Light Blue	 1818 Royal	 190 Navy	 234 Kelly Green	 256 Dark Green	 338 Yellow Cab	 373 Vegas Gold
 377 C Gold	 411 Spirited Orange	 465 Orange	 475 Texas Orange	 5108 Heirloom Pink	 529 Scarlet	 539 Cardinal	 578 Maroon	 588 Garnet	 6017 Urban Lilac
 680 Purple	 7091 Oatmeal	 7202 Briefly Brown	 775 Brown	 930 Heather Grey	 990 Granite Heather	 999 Black			



CHAMPION POWERBLEND® HOOD

CS2071 | XS -3XL

3XL AVAILABLE IN: 1818, 190, 256, 529, 539, 578, 930, 999

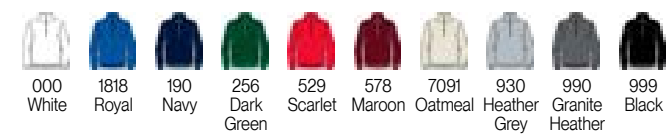
- 50% Cotton / 50% Polyester powerblend fleece
- Classic fitting set-in sleeve silhouette
- Double layer hood with drawcord
- Front pouch pocket
- Rib knit at cuffs and waistband
- Authentic C Logo patch on left sleeve
- Art #: **APC03792661 P2 FC2 APC03792667 DSP1 DSP**



CHAMPION POWERBLEND® 1/4 ZIP

CS2083 | XS - 2XL

- 50% Cotton / 50% Polyester powerblend fleece
- Classic fitting set-in sleeve silhouette
- Covered zipper at center front
- Finished back neck seam
- Rib knit at cuffs and waistband
- Authentic C Logo patch on left sleeve
- Art #: **AEC03448261 ELC**



CHAMPION POWERBLEND® FULL ZIP

CS2072 | XS-2XL

- 50% Cotton / 50% Polyester powerblend fleece
- Classic fitting set-in sleeve silhouette
- Double layer hood with drawcord
- Covered Zipper at Center Front
- Front pouch pocket
- Rib knit at cuffs and waistband
- Authentic C Logo patch on left sleeve
- Art #: **APC03795949 X1 LC**





CHAMPION POWERBLEND® 7" SHORT

CP2075 | XS - 2XL

- 50% Cotton / 50% Polyester powerblend fleece
- Comfortable encased elastic waistband with interior drawcord
- Hand pockets lined with lightweight jersey
- Modern 7" inseam with raw edge detail at hem
- Authentic C Logo patch at left hip
- Art #: **APC03792641 P2 LL**



CHAMPION POWERBLEND® BANDED PANT

CP2071 | XS-2XL

- 50% Cotton / 50% Polyester powerblend fleece
- Comfortable, everyday fit
- Hand pockets lined with lightweight jersey
- Inside drawcord at waistband
- Covered elastic ankle
- Authentic C Logo patch at left hip
- Art #: **APC03799579 DSP1 DSP**



CHAMPION POWERBLEND® OPEN BOTTOM PANT

CP2081 | XS-2XL

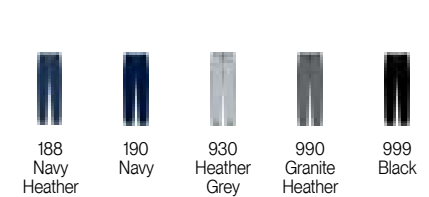
- 50% Cotton / 50% Polyester powerblend fleece
- Comfortable, everyday fit
- Hand pockets lined with lightweight jersey
- Inside drawcord at waistband
- Authentic C Logo patch at left hip
- Art #: **APC03799231 P1 LL**



CHAMPION POWERBLEND® FLEECE JOGGER PANT

CP2072 | XS-2XL

- 50% Cotton / 50% Polyester powerblend fleece
- 31" inseam with rib cuff at ankle
- Hand pockets lined with lightweight jersey
- Inside drawcord at waistband
- Authentic C Logo patch at left hip
- Art #: **APC03792886 X3 LL**

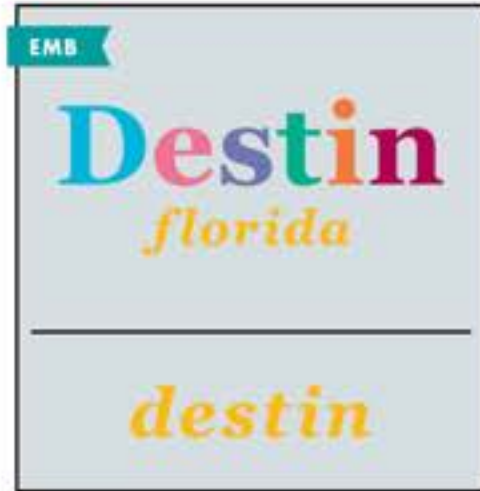


OUTFITTING
MEN'S POWERBLEND SETS



GRAPHIC SHOP
MEN'S POWERBLEND

GRAPHIC SHOP
MEN'S POWERBLEND



AEC03799805
E / FC / CAB, CER, LV, BG, LO, SAN, GO
AEC03799666 E / CU / GO



APC03799539
X2 / FC3 / CNY, PC



APC03802071
P2 / FC3 / LV, CP



APC03802069
X3 / FC2 / YW, LO, BK



APC03800653
P1 / FC2 / ALM



APC03799232
P3 / FC2 / CV, WGO, NO



APC03802072
P2 / FC2 / TKG, AFV



APC03799063
P3 / FC3 / BK, PMS 2318, CHM



APC03799037
P1 / FCX / PEC



APC03799065
P1 / FC2 / ANS



APC03799620
X1 / FC3 / CHM



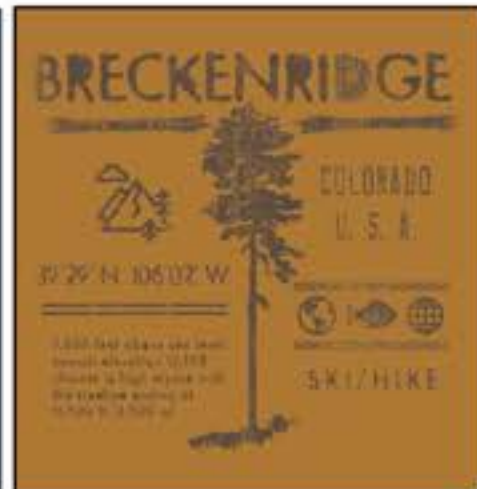
APC03799062
X1 / FC3 / STR



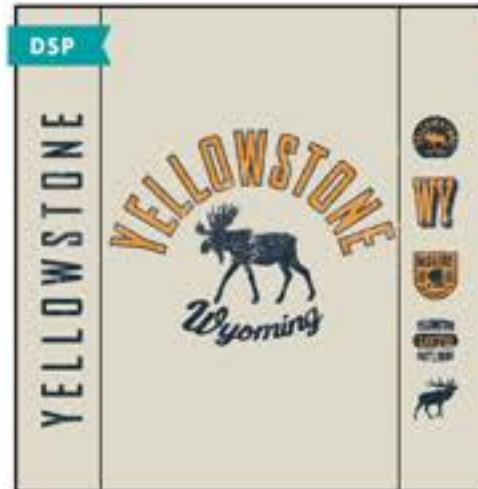
APC03799036
P2 / FC2 / BIT, TBL



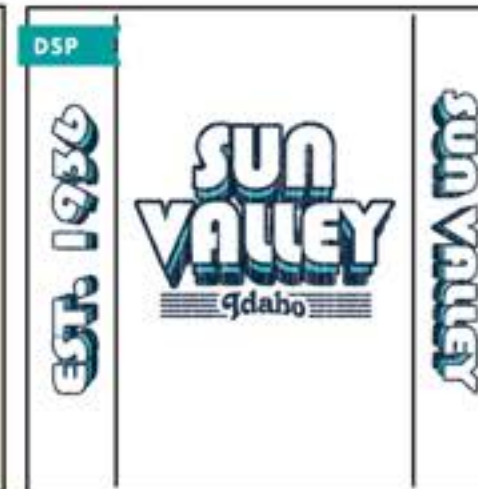
APC03799616
P1 / FC3 / BAJ



APC03799064
P1 / FC2 / BZ



APC03802265
P2 / FC2 / MNY, KA
APC03802266
DSP2 / DSP / MNY, KA



APC03799233
P2 / FC2 / PC, NY
APC03799234
DSP2 / DSP / PC, NY



APC03799231
P1 / LL / MNY

CORE

TEES & SHORTS





JERSEY SHORT SLEEVE TEE

CT1000 | S-3XL
1134, 2009, 4111, 5108, 6107, and 7202 S-2XL only

- 100% cotton jersey
- 950 is 90% cotton / 10% polyester
- 990 is 50% cotton / 50% polyester
- Classic Fitting Silhouette with set in sleeves and rib collar
- Heat transfer label at back neck

• Art #: **APC03792689 P3 FC2**



JERSEY LONG SLEEVE TEE

CT1730 | S-3XL, 3XL AVAILABLE IN: 000, 1818, 190, 256, 529, 539, 578, 950, 990, 999

- 100% cotton jersey
- 950 is 90% cotton / 10% polyester
- 990 is 50% cotton / 50% polyester
- Classic Fitting Silhouette with set in sleeves
- Rib Collar and Cuffs
- Heat transfer label at back neck

• Art #: **APC03795373 X1 FC2**
APC03795374 DSX1 DSP





MEN'S CLASSIC MESH SHORT

C81255 | S-3XL, 3XL in 190, 939, 999

- 100% polyester mesh
- 8.5" inseam
- Quickcord waistband with inside Champion branding
- Side pockets and vents
- Art #: **APC03449121 X2 FC2 APC03026431 X2 LL**



CHAMPION
STATE OF
MIND

MEN'S WOVEN 5" SHORT

C81001 | S-2XL

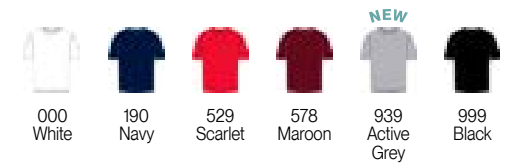
- 92% Polyester, 8% Elastane
- Elasticated Waistband
- Interior Drawcord
- Slanted Side Pockets
- Vented Hem
- Back Yoke
- 5" Inseam
- Art #: **APC03795437 P1 LL**



MEN'S ATHLETIC SHORT SLEEVE TEE

CT1028 | S-3XL

- 100% polyester
- Self collar
- Art #: **APC03813362 X1 FC3**



GRAPHIC SHOP
MEN'S CORE TEES & SHORTS



APC03802084
 X2 / FC3 / PLG, WH



APC03799276
 P1 / FC2 / ASH



APC03801412
 P2 / FC2 / MNY, SMK



APC03799197
 P2 / FC1 / MNY, CI



APC03799277
 P1 / FC2 / RN



APC03801890
 P1 / FC2 / OAK



APC03799199
 P1 / FC2 / NY



APC03799615
 X3 / FC3 / ASH, GEP, MS



APC03799230
 X3 / FC3 / SKY, BIT, MNY

GRAPHIC SHOP
MEN'S CORE TEES & SHORTS



APC03802075
 P2 / FC2 / JA, BAY



APC03802081
 P2 / FC2 / LR, WH



APC03799280
 P1 / FC2 / STG



APC03799279
 X2 / FC2 / WH, SCR



APC03799621 P1 / LC / BR
 APC03799623
 X2 / BA2 / CHM, BR



APC03802088 P2 / FC2 / MS, AGM
 APC03802089
 P2 / LS / MS, AGM



APC03799195
 X2 / LC / WH, WRD
 APC03799194
 X2 / BA1 / WH, WRD



APC03801406
 P2 / FC1 / RY, LO
 APC03801410
 P2 / BA3 / RY, LO



APC03801880
 P2 / FC2 / MNY, CV
 APC03801886
 DSP2 / DSP / MNY, CV



OUTERWEAR & POLOS



CHAMPION MEN'S EXPLORER FULL ZIP JACKET

CB1074 | XS - 2XL

- 75% Recycled Polyester, 25% Polyester Micro Fleece Body
- 100% Polyester Woven Overlays
- Zippered Chest Pocket
- Hand Pockets
- Binding at Cuff and Waistband
- CF Zipper with Ticked Cord puller
- Art #: **AEC03793355 E LC**



MEN'S HEAVYWEIGHT CHAMPION JACKET

CB1075 | XS -3XL, 3XL available in 190, 9032, and 999

- 100% Textured Polyester Woven Outer shell
- 61% Polyester, 27% Cotton, 12% Rayon Fleece Liner
- 3 Piece Hood
- Poly Drawcord with Metal Tip
- Binding at Cuff and Waistband
- CF Zipper with Pull tab
- Kanga Front Pocket
- Raglan Sleeves
- Interior Embroidery Zipper
- Art #: **AEC03793357 E LC**





PACKABLE JACKET

CB1012 | XS-3XL, 3XL available in 190, 972, 999

- 100% polyester micro poplin fabric with water resistant coating
- Open bottom with shock cords
- Scuba collar with hood
- Can be packed into front pocket
- Elasticated cuff to block wind
- Specialty hang tag calls out packing capabilities
- Art #: **APC03793356 X1 LC**



FULL ZIP LIGHTWEIGHT JACKET

CB1015 | XS-3XL, 3XL available in 190, 972, 999

- 100% polyester micro poplin fabric with water resistant coating
- Open bottom with shock cords
- Scuba collar with hood including shock cords
- Lower front on-seam pockets
- Elasticated cuff to block wind
- Art #: **APC03799231 P1 LC**



MEN'S MICRO MESH 1/4 ZIP

CT3009 | S-2XL

- 93% polyester, 7% spandex heathered micro mesh
- Stand collar with exposed zipper, featuring self-fabric stop at bottom and mini zipper guards at top
- Rolled forward side seams for a more active fit
- Straight body fit with side vents for added movement
- Art #: **AEC03798423 E LC**



MEN'S MICRO MESH SPORT POLO

CT3022 | S-2XL

- 93% polyester, 7% spandex heathered micro mesh
- Self-fabric collar and three button placket
- Standard finish sleeve and hem
- Straight body fit with side vents for added movement
- Art #: **AEC03798424 E LC**



MEN'S TEXTURED SOLID POLO

CT3012 | S-3XL

3XL available in 000, 190, 939 and 999

- 100% polyester textured stripe jacquard
- Rib knit collar
- 3 button placket
- Side vents
- Art #: **AEC03544734 E LC**



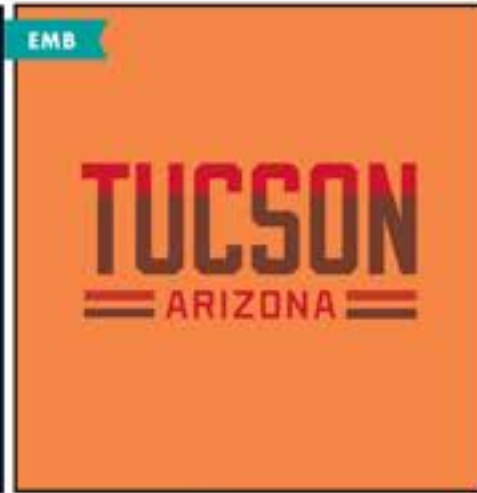
GRAPHIC SHOP
MEN'S OUTERWEAR & POLOS



AEC03798424
 E / LC / WH, BK



AEC03798423
 E / LC / WH, SI, MNY, SI



AEC03798838
 E / LC / TO, DAR, DAR, TO, DAR



AEC01219122
 E / LC / MNY, WH, MNY, MNY, MNY



AEC03353278
 E / LC / RNY



AEC03353286
 E / LC / BK, BK



AEC03798837
 E / LC / MNY, RD, WH, MNY, RD



AEC03448261
 E / LC / CV, CV, CV, CV



AEC03798934
 E / LC / KH, GPH, GPH



AEC01454178
 E / LC / MNY, CV, MNY



AEC03205142
 E / LC / WH



AEC02948441
 E / LC / WH



APC03799498
 P2 / LC / SI, CH



AEC03027249
 E / LC / NIK



AEC03798933
 E / LC / GAP, CBT, GAP



AEC02878472
 E / LC / WH



AEC02878466
 E / LC / MNY, RD, MNY



AEC02878465
 E / LC / FRR, WH

EARTH TONES

CAPSULE



CS2071 7202
APC03792661 P2 / FC2
APC03792667 DSP1 / DSP



APC03792678 P3 / BC
CS2083 7091
APC03792676 P3 / LC



CS2071 7202
APC03792663 P2 / FC2
APC03792665 DSP1 / DSP



CT1000 2009
APC03792680 P3 / FC3



CT1000 7202
APC03792689 P3 / FC2



CT1000 2009
APC03792687 P3 / FC3



C82075 7202
APC03792640 P2 / LL



C82075 7202
APC03792641 P2 / LL

FISHING

CAPSULE

APC03795945 X1 / BA3



CS2072 256
APC03795946 X1 / LC



CT1028 939
APC03795938 P1 / FC2



CP2071 256
APC03799579 DSP1 / DSP

APC03795947 X1 / BA3



CS2072 990
APC03795949 X1 / LC



CT1028 939
APC03795940 P1 / FC2



CP2071 990
APC03799582 DSP1 / DSP

CIRCLE

CAPSULE



CT1730 1616
APC03795368 X1 / FC2
APC03795371 DSX1 / DSP



CT1730 1616
APC03795373 X1 / FC2
APC03795374 DSX1 / DSP



C81001 9022
APC03795437 P1 / LL



CT1730 5108
APC03795375 BA4 / X2
APC03795379 LC / X1



CT1730 5108
APC03795378 BA4 / X2
APC03795382 LC / X1

COLORFUL

CAPSULE



C6055 190
APC03793896 / X2 / LC EV, LMN APC03793907 / X2 / BA2 EV, LMN



C6055 190
APC03793882 / X2 / LC HI, MEM APC03793883 / X2 / BA2 HI, MEM



CS1220 373
APC03793879 / P2 / FC3
DG, STG



CS1220 256
AEC03795351 / 3DE / FC
TN, TN, TN



CS1220 234
AEC03795352 / 3DE / FC
RSB, RSB, RSB



CS1220 5108
APC03793868 / P2 / FC3
EME, MEM



GARMENT DYE



CHAMPION MEN'S GARMENT DYED RW HOOD

GD101C | S - 2XL

- 91% Cotton, 9% Polyester Reverse Weave fleece with Garment dye for soft hand and washed look
- 2-Piece Self-lined hood
- Knotted Drawcord
- Kanga Pocket
- Rib at Side Panels, Cuff and Waistband
- Relaxed fit
- Art #: **APC03795399 P1 FC3 APC03795401 DSP1 DSP**





CHAMPION THE TIDES



CHAMPION MEN'S GARMENT DYED RW CREW GD149C | S - 2XL

- 91% Cotton, 9% Polyester Reverse Weave fleece with Garment dye for soft hand and washed look
- Rib at Collar, Side Panels, Cuff and Waistband
- Relaxed fit
- Art #: **APC03795386 P1 FC2**



CHAMPION MEN'S GARMENT DYED SS TEE CD10C | S - 2XL

- 100% Cotton Jersey with Garment dye for soft hand and washed look
- Rib at Collar
- Relaxed fit
- Art #: **APC03795386 P1 FC2**



CHAMPION MEN'S GARMENT DYED LS TEE CD20C | S - 2XL

- 100% Cotton Jersey with Garment dye for soft hand and washed look
- Rib at Collar and Cuff
- Relaxed fit
- Art #: **APC03795393 P1 FC2 APC03795401 P1 DSP**





AEC03798840 4A6 / FC
NYW, MNY, MNY, MNY, MNY



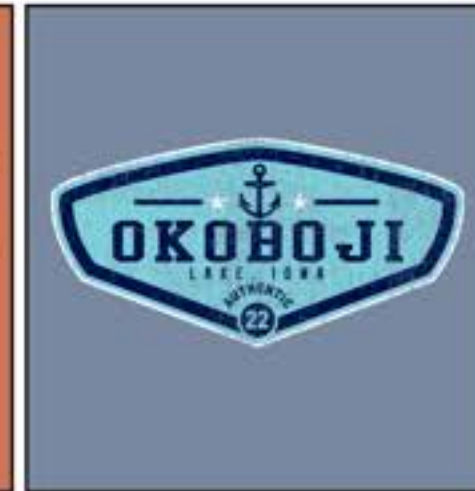
APC03800701
P1 / FC2 / CB



APC03801929
P2 / FC2 / MNY, ACA



APC03800699
P3 / FC2 / SMK, CV, DMA



APC03802110
P3 / FC3 / WH, CWA, MNY



APC03799421
P1 / FC3 / WIN



APC03801914
P2 / FC2 / WBL, CV



APC03799229
P1 / FC2 / ASH



APC03799417
P1 / FC2 / MNY



APC03799545
P1 / FC3 / NY



APC03799198
P2 / FC2 / MNY, ACA



APC03799544
X2 / FC2 / MNY, CON



APC03800654
P1 / FC1 / DRD



APC03799602
P2 / FC2 / SMOKE, BK



APC03799392
P2 / FC3 / MNY, CV



APC03799196
P1 / FC2 / MNY



APC03801918
P1 / FC2 / MNY



APC03802109
X2 / FC3 / WH, BK



MEN'S REVERSE WEAVE



MEN'S REVERSE WEAVE CREW

CS3050 | XS - 3XL, XS & 3XL AVAILABLE IN 190, 940, 950
3XL AVAILABLE IN 1616

- 80% cotton / 20% polyester heavyweight fleece
- Fabric cut on the cross-grain to resist vertical shrinkage
- Signature rib side panels for mobility
- Stretch rib at collar, cuffs, and waistband
- Art #: **AEC03795576 3DE FC**





MEN'S REVERSE WEAVE HOOD

CS3051 | XS-3XL
3XL AVAILABLE IN: 190, 940, 950. XS AVAILABLE IN 940

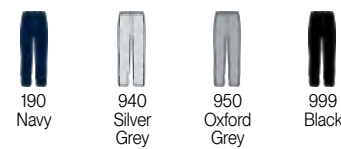
- 80% cotton / 20% polyester heavyweight fleece
- Fabric cut on the cross-grain to resist vertical shrinkage
- Signature rib side panels for mobility
- Two-ply hood with cotton draw cords
- Stretch rib at cuffs and waistband
- Pouch pocket
- Art #: **APC03799236 P1 FC2**



CHAMPION MEN'S REVERSE WEAVE SWEATPANT

RW10C | S - 2XL

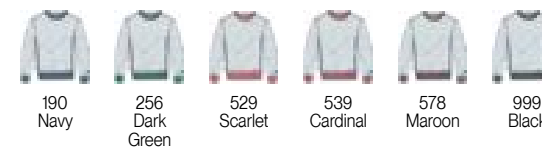
- 80% Cotton, 20% Polyester Reverse Weave Fleece
- Elasticated Waistband
- Interior Drawcord, knotted
- Side seam pockets
- Banded bottom
- Relaxed fit
- Art #: **APC03725690 P1 LL**



MEN'S REVERSE WEAVE YARN DYE RIB CREW

CS3358 | XS-2XL

- 80% cotton / 20% polyester heavyweight fleece
- Fabric cut on the cross-grain to resist vertical shrinkage
- Signature rib side panels for mobility
- Throwback striped rib at collar, cuffs, and waistband
- Body color is always silver grey, color name represents stripes in trim
- Art #: **APC03799068 P1 FC2**



MEN'S REVERSE WEAVE FULL ZIP HOOD

CS3044 | XS-2XL

- 80% cotton / 20% polyester heavyweight fleece
- Fabric cut on the cross-grain to resist vertical shrinkage
- Traditional Reverse Weave styling with rib side panels for movement
- Metal zipper at center front
- Pouch pocket on lower body
- Classic Reverse Weave fleece fit
- Art #: **AEC03798837 E LC**



GRAPHIC SHOP
MEN'S REVERSE WEAVE

GRAPHIC SHOP
MEN'S REVERSE WEAVE



AEC03798839
 2A9 / FC / NYW, MNY, MNY, RD, RD,
 RB, MNY



APC03799236
 P1 / FC2 / ASH



APC03799613
 P2 / FC2 / SI, SG



APC03799068
 P1 / FC2 / WIN



APC03799069
 P4 / FC3 / MNY, MNG, CV, CWA



APC03799235
 P2 / FC2 / ASH, WFG



APC03802073
 P1 / FC2 / DG



APC03799583
 P2 / FC2 / CMP, CI



APC03799237
 P2 / FC2 / NY, ASH



APC03799071
 P1 / FC2 / BK



APC03802074
 P1 / FC2 / DBC



APC03799585
 P1 / FC2 / TB



APC03800652
 P1 / FC2 / NY



APC03799275
 P1 / FC2 / NY



APC03799066
 X1 / FC2 / ST



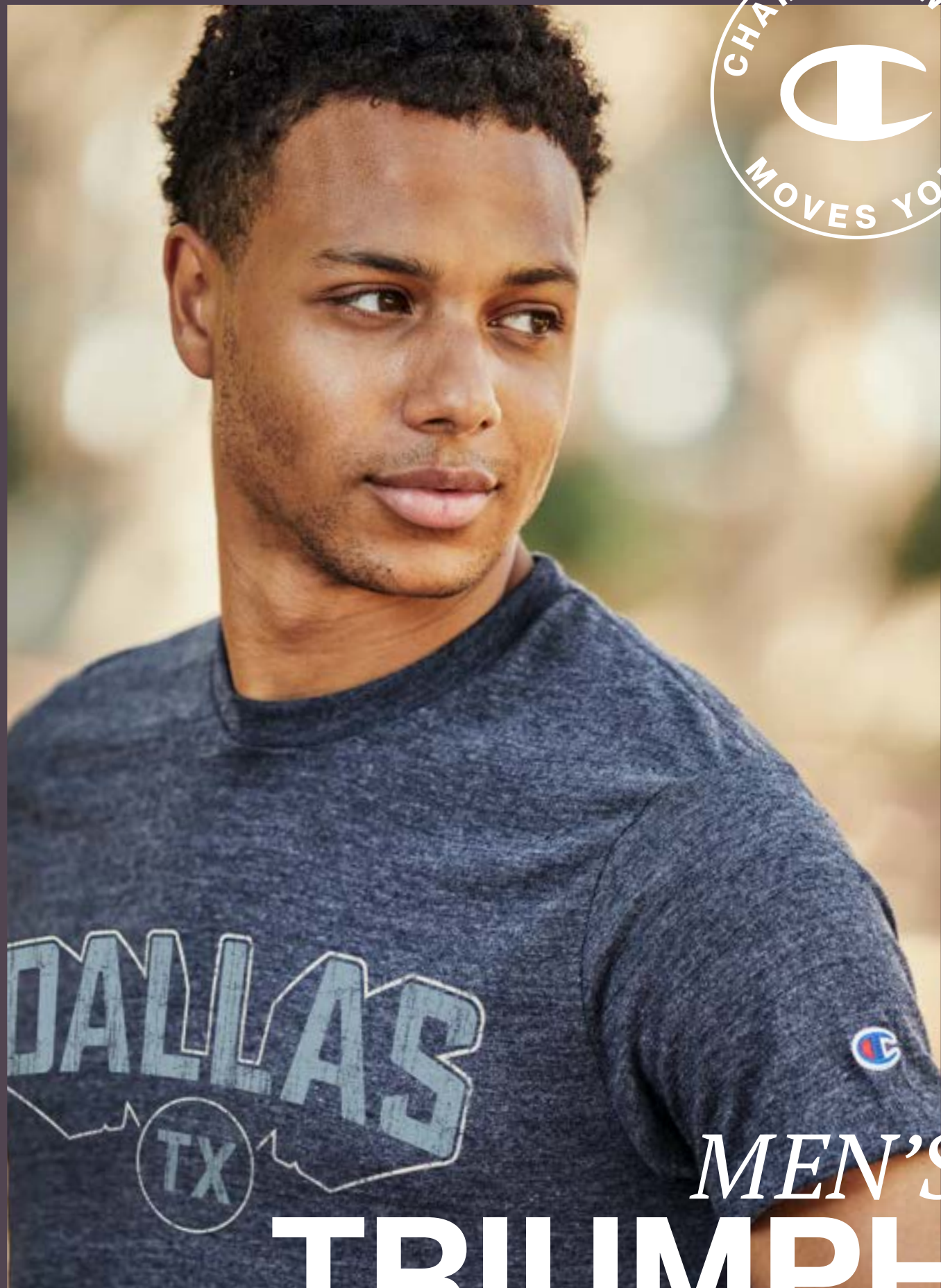
APC03799073
 P1 / FC2 / NY



APC03799070
 P2 / FC2 / ASH, EV



APC03801936
 P1 / FC2 / TBL



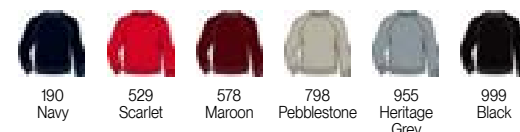
MEN'S TRIUMPH



CHAMPION MEN'S TRIUMPH FLEECE RAGLAN CREW

CS0331 | XS-2XL

- Super soft 47% polyester, 39% cotton, 14% rayon triblend fleece
- Classic raglan silhouette with comfortable all-day fit
- 2x2 rib at collar, cuffs and bottom band
- Art #: **APC03792643 P3 FC2**



CHAMPION MEN'S TRIUMPH FLEECE RAGLAN 1/2 ZIP

CS0332 | XS-2XL

- Super soft 47% polyester, 39% cotton, 14% rayon triblend fleece
- Classic raglan silhouette with stand collar
- Color matched reverse coil zipper at center front
- 2x2 rib cuffs and bottom band
- Art #: **AEC03792856 E LC**





MEN'S TRIUMPH FLEECE HOOD

CS0337 | XS-2XL

- 47% polyester, 39% cotton, 14% rayon fleece
- 2x2 rib at cuffs and waistband
- Raglan sleeve and classic fleece body fit
- Kangaroo pocket on front body
- Art #: **APC03799417 P1 FC2**



MEN'S TRIUMPH FLEECE JOGGER

CP0333 | XS-2XL

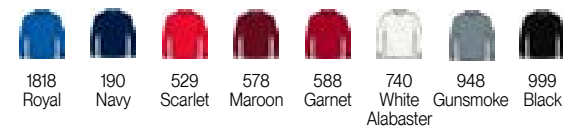
- 47% polyester, 39% cotton, 14% rayon fleece
- 2x2 rib at cuffs and waistband
- Classic fitting jogger with drawcord at waist
- Hand pockets with jersey pocket bags
- Art #: **APC03692995 X1 LL**



MEN'S TRI-BLEND LONG SLEEVE TEE

CT0225 | S-2XL

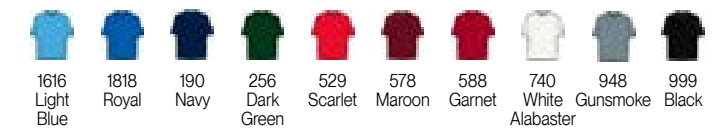
- 50% polyester / 37% cotton / 13% rayon jersey
- 1x1 rib at collar and cuffs
- Set in long sleeve and straight body
- Ladder stitching at bottom opening
- Art #: **APC03792876 X2 FC2 APC03792874 DSX2 DSP**



MEN'S ULTIMATE TRIBLEND TEE

CT1060 | S-2XL

- 50% polyester / 37% cotton / 13% rayon jersey
- 1x1 rib at collar
- Set in short sleeve with slightly shorter, more modern fit
- Ladder stitching at sleeve hems and bottom opening
- Art #: **APC03799282 P4 FC2**





APC03799281
P1 / FC2 / CB



APC03799376
P2 / FC2 / ASH, BK



APC03801911
X2 / FC2 / CV, MNY



APC03799282
P4 / FC2 / CIT, KA, NO, CH



APC03801900
X1 / FC2 / OAK



APC03801906
P2 / FC2 / DG, MNY



APC03799601
X1 / FC3 / WDG



APC03801904
X2 / FC3 / CV, MNY



APC03799375
P2 / FC2 / ASH, DS



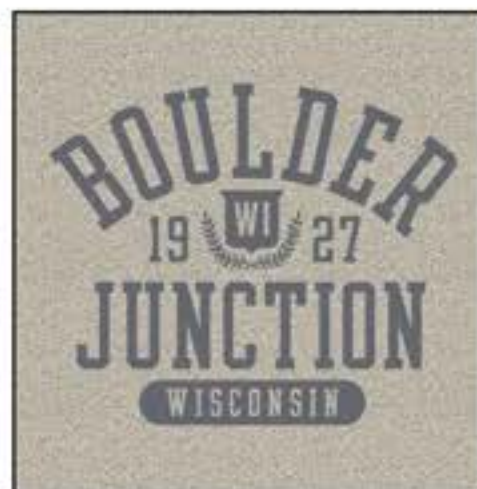
APC03801923
P2 / FC2 / CV, DS



APC03801909
P2 / FC2 / MNY, SI



APC03799310
P2 / FC2 / WIN, ST



APC03801894
P1 / FC2 / MD



APC03799283
P2 / FC2 / WFG, ASH



APC03801920
X1 / FC2 / DYY



APC03801896
P2 / FC2 / WIN, CV



APC03799311
P3 / FC2 / NY, NO, WGO



APC03799377
X2 / FC3 / CIT, MNY

WOMEN'S COLLECTION

	XS	S	M	L	XL	2XL
CHEST (IN)	30 - 31½	33 - 34½	35 - 36½	38 - 39½	41 - 42½	44
WAIST (IN)	22½ - 24	25½ - 27	27½ - 29	30½ - 32	33½ - 35	36½
HIP (IN)	32½ - 34	35½ - 37	37½ - 39	40½ - 42	43½ - 45	46½



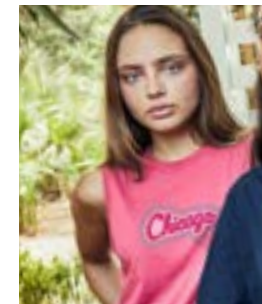
73 C6043
Women's Core
Oversized Tee



74 C6040
Women's Core
V Neck Tee

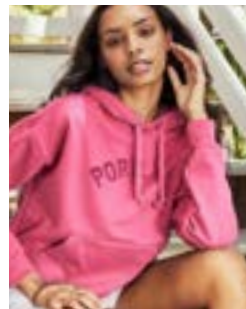


74 C6039
Women's Core
Short Sleeve Tee



75 C6042
Women's Core
Muscle Tank

▶▶ POWERBLEND



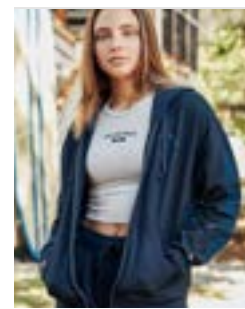
60 S760
Powerblend®
Women's Hood



61 S650
Powerblend®
Women's Crew



61 P950
Powerblend®
Women's Pant



62 S856
Powerblend®
Women's Full Zip

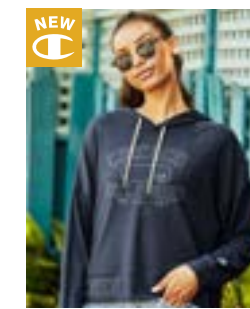
▶▶ SUEDED SOFT TOUCH



75 C6041
Women's Core
Long Sleeve Tee



79 C4002
Women's Sueded
Touch Crew



79 C4003
Women's Sueded
Touch Hood



81 C3007
Women's Reverse Weave
Cropped Crew

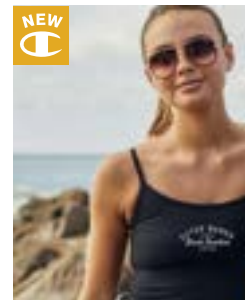
▶▶ CORE TEES



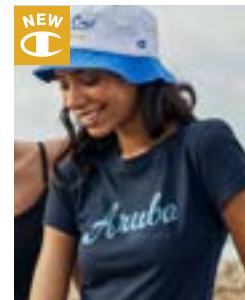
62 P940
Powerblend®
Women's Short



63 S456
Powerblend® Open
Women's 1/4 Zip



70 C6054
Women's Crop
Scoop Cami



70 6055
Women's Core
Baby Tee

▶▶ TRIUMPH



81 C3002
Women's Reverse Weave
Fleece Hood



85 C6204
Champion Triumph
Women's Fleece Hood



85 C6203
Women's Triumph
Fleece Pants



86 C6200
Women's Triumph
Long Sleeve Fleece Crew



71 C6009
Women's Crop Tank
Top



71 C7791
Women's
Mesh Short



72 C6003
Women's Boyfriend
Crop Tee



72 C6024
Women's Boyfriend Crop
Long Sleeve Tee



87 C6016
Women's Tri-Blend
V-Neck Tee





WOMEN'S
**POWER
BLEND**

LAKE PLACID
NEW YORK

Adiron



CHAMPION FALL 2024 RESORT

AEC03794116 3DE FC APC03795448 P1 LL



CHAMPION POWERBLEND® WOMEN'S HOOD

S760 | XS-2XL

- 50% cotton / 50% polyester
- Rib cuffs & waistband
- Relaxed fit
- Modern length
- Jersey lined hood
- Knotted cotton drawcord
- Kanga pocket
- Art #: **AEC03795194 E FC**



CHAMPION POWERBLEND® WOMEN'S CREW

S650 | XS-2XL

- 50% cotton / 50% polyester
- Rib collar, cuffs, waistband
- Relaxed fit
- Modern length
- Art #: **AEC03794116 3DE FC**



CHAMPION POWERBLEND® WOMEN'S PANT

P950 | XS-2XL

- 50% cotton / 50% polyester
- Elasticated Waistband and cuff
- Relaxed fit
- Side seam hand pockets
- Interior knotted drawcord
- Art #: **APC03795448 P1 LL**

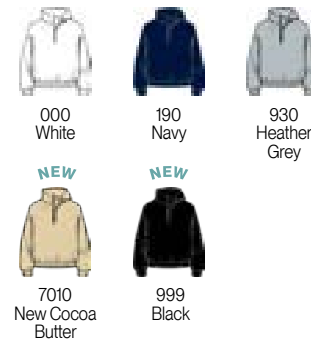


CHAMPION YOUR OWN PARADISE



CHAMPION POWERBLEND® WOMEN'S ¼ ZIP

- S456 | XS - 2XL
- 50% cotton / 50% polyester
 - Rib Cuffs & Waistband
 - Relaxed fit
 - Modern Length
 - Kissing Welt Placket
 - Mock Collar
 - Art #: **AEC03795361 E LC**



CHAMPION POWERBLEND® WOMEN'S FULL ZIP

S856 | XS-2XL

- 50% cotton / 50% polyester
- Rib cuffs & waistband
- Relaxed fit
- Modern length
- Kissing welt placket
- Jersey lined hood
- Knotted Cotton drawcord
- Kanga pocket

• Art #: **APC03794090 X2 LC APC03794091 X1 VS**



CHAMPION POWERBLEND® WOMEN'S SHORT

P940 | XS-2XL

- 50% cotton / 50% polyester
- Elasticated Waistband
- Relaxed fit
- Side seam hand pockets
- Knotted drawcord
- 3" Inseam

• Art #: **APC03794092 P1 LL**



GRAPHIC SHOP
WOMEN'S POWERBLEND



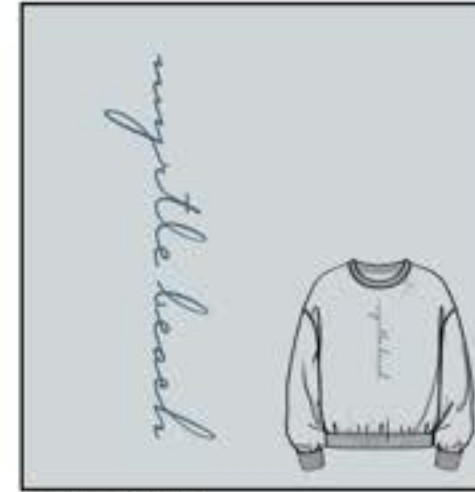
APC0380211
X2 / FC3 / CNY, RD



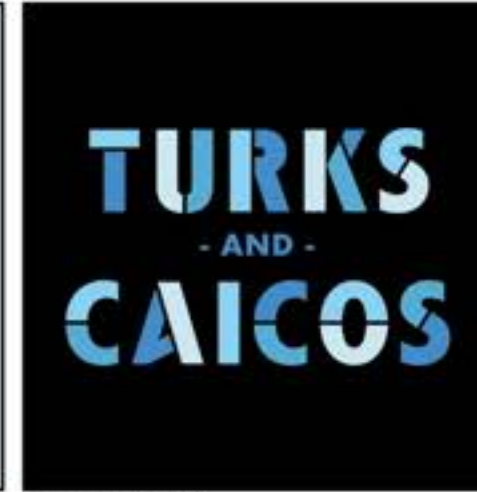
APC03801954
X2 / FC2 / WH, CNY



APC03799540
P4 / FC3 / BCB, AO, PU, SRD



APC03799536
P1 / FC2 / BAJ



APC03799533
X4 / FC3 / SAB, POL, WAT, DBL



APC03799534
X2 / FC3 / ICE, WDG



APC03799425
P1 / FC2 / AL



APC03799462
X3 / FC3 / WH, CWA, GRH



APC03799463
P2 / FC2 / WH, CTE



AEC03798841
VT3 / VFC / SUB, PAT



APC03801958
P2 / FC2 / NAT, WIN



AEC03800027
2A9 / FC / PRT, CDP, NIK



APC03799315
P4 / FC2 / PFLV, PFS, PFLY, PFLG



AEC03798824
E / FC / PK, RAN



APC03799538
P5 / FC3 / BTR, CNY, GO, KA, BCO



APC03799312
X2 / FC2 / WH, SAN

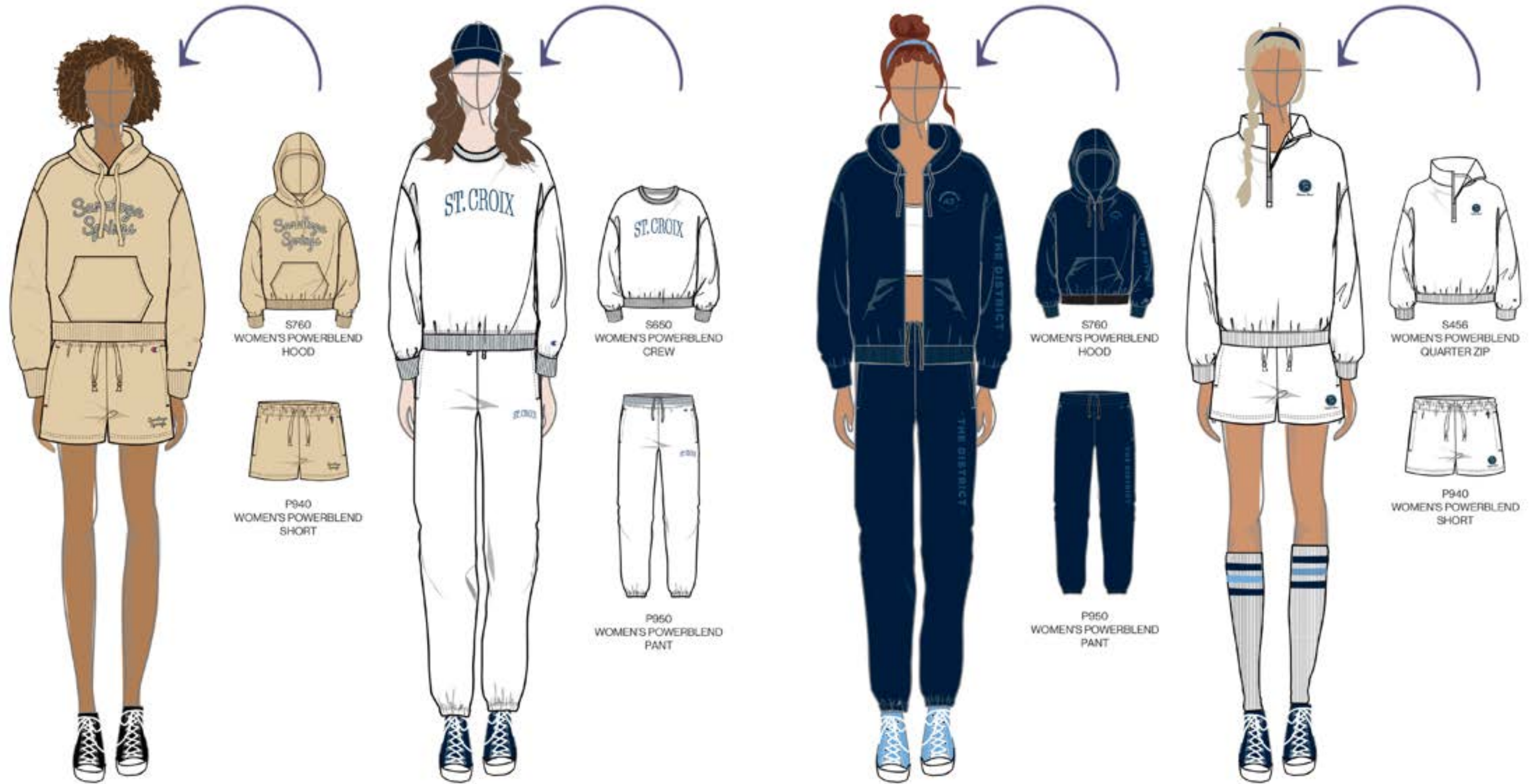


APC03802112
P2 / FC2 / POW, NY



APC03799313
P2 / FC2 / PWH, WIN

OUTFITTING
WOMEN'S POWERBLEND SETS





WOMEN'S CORE TEES





WOMEN'S CROP SCOOP CAMI

C6054 | XS-2XL

- 78% polyester, 22% elastane soft touch jersey
- Bound Armhole and Neckline
- Interior shelf bra
- Art #: **APC03813494 X1 FC**



CHAMPION WOMEN'S CORE BABY TEE

C6055 | XS - 2XL

- 60% cotton / 40% polyester Jersey
- Set in Rib Collar
- Crew Neckline
- Closer-to-body fit
- 22" FBL
- Art #: **APC03799534 X2 FC3**



WOMEN'S CROP TANK TOP

C6009 | XS-2XL

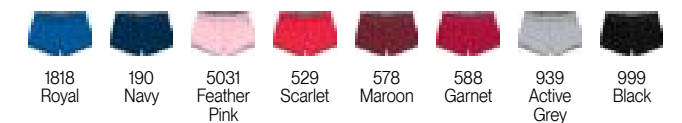
- 90% cotton / 10% spandex cottony, comfortable jersey
- Crew neck with narrow shoulder for modern appeal
- Cropped with next to body fit – Perfect as a layering piece or on its own
- Art #: **APC03813494 X1 FC**



WOMEN'S MESH SHORT

C7791 | XS-2XL

- 100% polyester mesh shell and tricot lining
- Self-fabric and logo elastic waistband
- Standard hem finish with tiny vent
- 3" inseam
- Art #: **APC03481987 X1 LL**



EXPLORE LIKE A CHAMPION



WOMEN'S BOYFRIEND CROP TEE

C6003 | XS-2XL

- 100% cotton jersey
- 950 is 90% cotton / 10% polyester
- Set-in neck rib
- Crop length with oversized "boyfriend" fit

• Art #: **APC03795512 X1 LC**



WOMEN'S BOYFRIEND CROP LONG SLEEVE TEE

C6024 | XS-2XL

- 100% cotton jersey
- 950 is 90% cotton / 10% polyester
- Set-in neck rib
- Crop length with oversized "boyfriend" fit

• Art #: **APC03801972 P2 FC2**



CHAMPION WOMEN'S CORE OVERSIZED TEE

C6043 | S/M, L/XL

- 60% cotton / 40% polyester jersey
- Set in rib collar
- Crew neckline
- Dropped shoulder
- Oversized fit (2 sizes fit all)
- 29" body length (S/M)

• Art #: **APC03795519 P3 FC1**

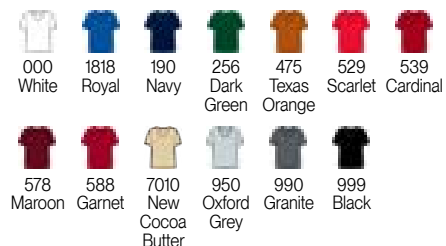




CHAMPION WOMEN'S CORE V NECK TEE

C6040 | XS-2XL

- 60% cotton / 40% polyester jersey
- Set in rib collar
- V neckline
- 25" body length
- Relaxed fit
- Art #: **APC03799313 P2 FC2**



CHAMPION WOMEN'S CORE SHORT SLEEVE TEE

C6039 | XS-2XL

- 60% cotton / 40% polyester jersey
- Set in rib collar
- Crew neckline
- 25" body length
- Relaxed fit
- Art #: **APC03794089 X1 FC3**



CHAMPION WOMEN'S CORE MUSCLE TANK

C6042 | XS-2XL

- 60% cotton / 40% polyester jersey
- Set in rib collar
- Rib detail at slight dropped armhole
- Crew neckline
- 24" body length
- Relaxed fit
- Art #: **APC03794088 X5 FC**



CHAMPION WOMEN'S CORE LONG SLEEVE TEE

C6041 | XS-2XL

- 60% cotton / 40% polyester jersey
- Set in rib collar
- Rib cuff
- Crew neckline
- 25" body length
- Relaxed fit
- Art #: **APC03799533 X4 FC3**



GRAPHIC SHOP
CORE TEES

GRAPHIC SHOP
CORE TEES



APC03799383
P1 / FC2 / ASH



APC03799754
X4 / FC3 / PK, MAR, BG, STM



APC03802139
P3 / FC2 / GO, SCR, PER



APC03799507
P2 / FC3 / ANS, AL



APC03799580
P1 / FC3 / BAJ



APC03799563
X1 / FC3 / VAN



APC03802140
X2 / FC2 / WH, GG



APC03799508
P1 / FC3 / SG



APC03799382
SPFP3 / FC2 / SPWH, WGO, NO



APC03802137
P2 / FC2 / GEP, TUL



APC03801963
X1 / FC2 / FRT



APC03799532
P4 / FC3 / OCN, CIT, OSH, BK



APC03799381
P1 / FC2 / TAU



APC03799384
P2 / FC2 / ASH, CNY



APC03801968
P2 / FC2 / WIN, CV



APC03799506
P1 / VC / SG



APC03801972
P2 / FC2 / AQM, PB



APC03802142
P2 / FC1 / WH, SRD



SUEDED SOFT TOUCH

NEW



NEW



CHAMPION WOMEN'S SUEDED TOUCH CREW

C4002 | XS - 2XL

- 88% Polyester, 12% Spandex Sueded fleece
- Set in self collar
- Dropped Shoulder
- Seaming down front/back of sleeve
- Striped twill Neck tape
- Self Cuff and Waistband
- Side vents
- Art #: **APC03795943 P2 FC2**



CHAMPION WOMEN'S SUEDED TOUCH HOOD

C4003 | XS - 2XL

- 88% Polyester, 12% Spandex Sueded fleece
- 2 piece Hood
- Dropped Shoulder
- Seaming down front/back of sleeve
- Striped twill Neck tape and drawcord
- Self Cuff and Waistband
- Side vents
- Art #: **APC03799345 P1 FC2 APC03799346 P1 FRW**





WOMEN'S REVERSE WEAVE



WOMEN'S REVERSE WEAVE CROPPED CREW C3007 | XS-2XL

- 80% cotton / 20% polyester heavyweight fleece
- 1x1 rib at collar, side panels and cuff
- Raw edge at hem
- Cropped Boyfriend fit
- Art #: **APC03799380 P1 FC2**



000
White



940
Silver
Grey

WOMEN'S REVERSE WEAVE FLEECE HOOD C3002 | XS-2XL

- 80% cotton / 20% polyester heavyweight fleece
- 1x1 rib at side panels, waistband and cuff
- Hood with drawcord
- "Boyfriend" fit
- Shorter length
- Art #: **AEC03798836 E FC**



940
Silver
Grey

WOMEN'S REVERSE WEAVE



AEC03798836
E / FC / MNY, RD, MNY



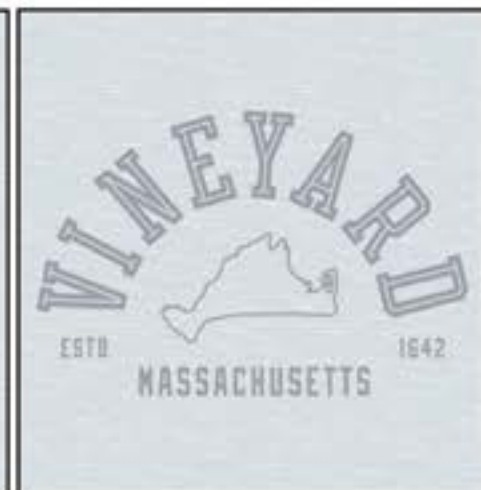
AEC03799374
E / FC / CMT, CMT, CMT



AEC03799487
E / LC / BYB, ATL



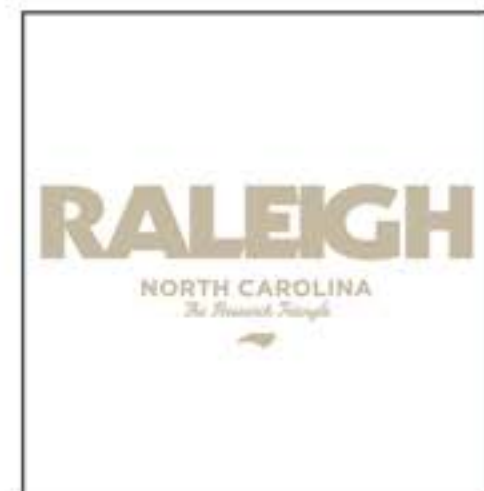
APC03799465
P2 / FC2 / PMS 2318, CH



APC03799581
P1 / FC2 / OXG



APC03799379
P1 / FC2 / GEP



APC03799501
P1 / FC3 / CMP



APC03802125
P2 / FC2 / CHB, WIN

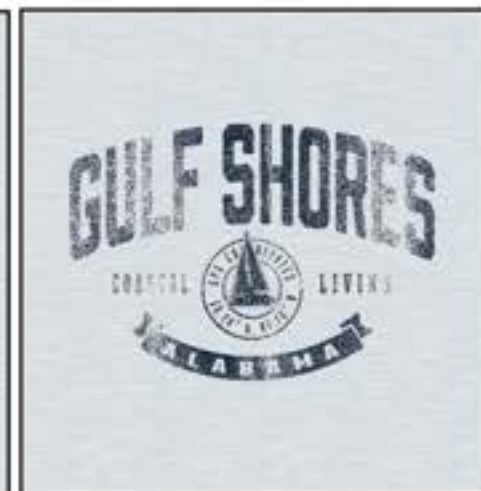


APC03799380
P1 / FC2 / BIN

WOMEN'S REVERSE WEAVE



APC03681143
P1 / FC2 / MNY



APC03628661
P1 / FC2 / MNY



APC03628600
P1 / FC2 / BK



APC03628665
X2 / FC2 / WH, OXG



APC03546557
P1 / FC2 / SWB



APC03481771
P1 / FC2 / MA



APC03448352
P1 / FC / WIN



APC03351857
P2 / FC3 / NY, AQ



APC03311398
P2 / FC / NY, LO



WOMEN'S
TRIUMPH

CHAMPION
THE ULTIMATE
GETAWAY

CHAMPION TRIUMPH WOMEN'S FLEECE HOOD

C6204 | XS-2XL

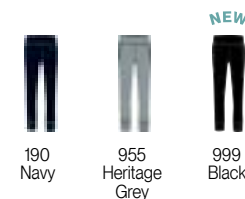
- 47% polyester, 39% cotton, 14% rayon triblend fleece
- Rib cuffs & waistband
- 2 Piece hood
- Relaxed fit
- Modern length
- Kanga pocket
- Art #: **AEC03795354 E FC**



WOMEN'S TRIUMPH FLEECE PANTS

C6203 | XS-2XL

- 47% polyester, 39% cotton, 14% rayon
- 2x2 rib at cuffs
- Encased elastic at waistband
- 28" Inseam
- Art #: **APC03799390 X3 LL**





WOMEN'S TRIUMPH LONG SLEEVE FLEECE CREW
C6200 | XS-2XL

- 47% polyester, 39% cotton, 14% rayon
- 2x2 rib at collar, cuffs, and waistband
- Slightly dropped shoulder for comfy girlfriend fit
- Shorter body length that sits right at the waistband
- Art #: **APC03690947 X1 FC2**



WOMEN'S TRI-BLEND V-NECK TEE
C6016 | XS-2XL

- 50% polyester / 37% cotton / 13% rayon jersey
- 1x1 rib at collar
- Set in short sleeve and relaxed body
- Ladder stitching at sleeve and bottom opening
- Art #: **APC03794119 X1 FC2**





APC03802144
X2 / FC2 / WH, BRE



APC03802147
X2 / FC2 / WH, CIT



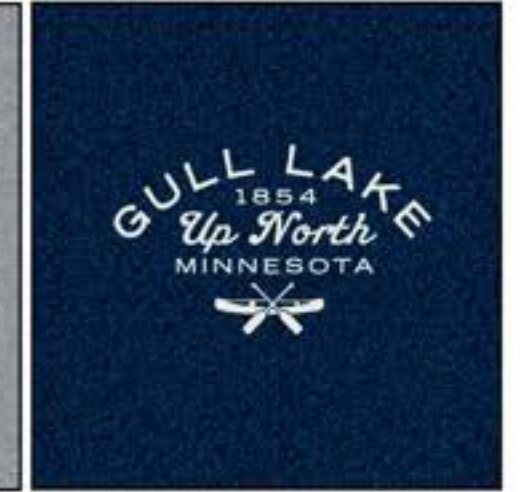
APC03799386
P1 / FC1 / DG



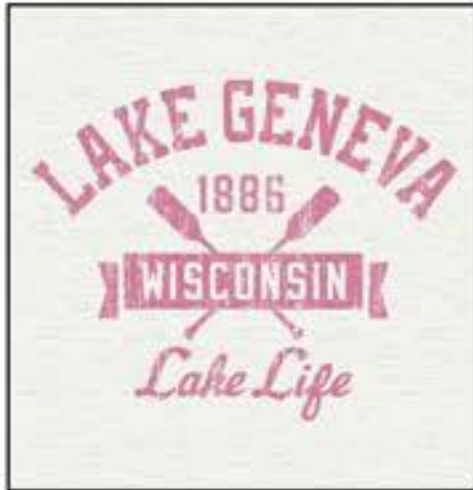
APC03799503
X2 / FC2 / ASH, DTC



APC03799485
P1 / FC3 / CH



APC03799387
P1 / FC1 / CV



APC03801998
P1 / FC2 / FUS



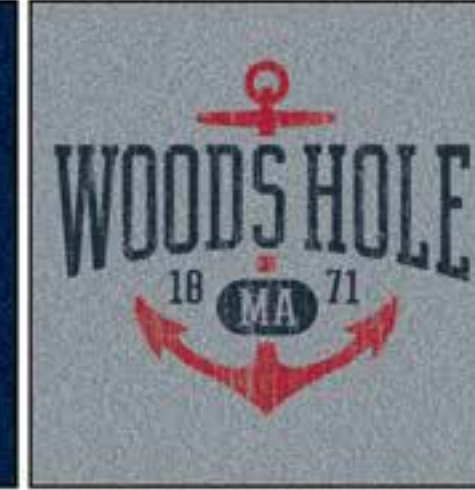
APC03799390
P3 / FC2 / GEP, PU, HNY



APC03799505
X2 / FC3 / PK, BER



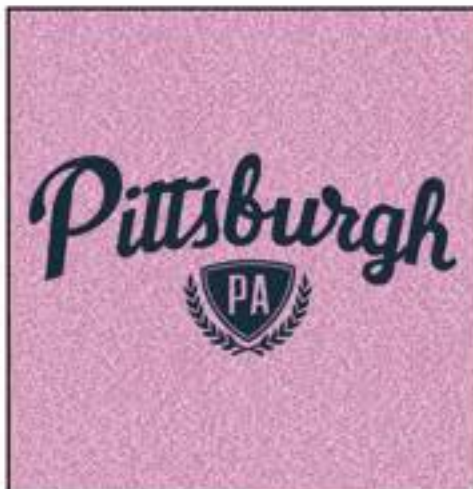
APC03799488
P2 / FC3 / CV, GC



APC03801987
P2 / FC2 / MNY, SRD



APC03799481
P1 / FC3 / ASH



APC03801982
P1 / FC2 / MNY



APC03799504
X2 / FC2 / SHL, BER



APC03799484
P1 / FC3 / CH



APC03799389
P2 / FC1 / WH, POS



APC03799502
X2 / FC2 / WH, MI



APC03802150
X2 / FC2 / WH, CP



YOUTH COLLECTION



92 CS1285
Youth Champion
Powerblend® Full Zip



92 CS1271
Youth Champion
Powerblend® Hood



93 CS1221
Youth Champion
Powerblend® Crew



93 CP2027
Youth Champion
Powerblend® Jogger



94 CS5030
Youth Reverse
Weave Crew



94 CB1021
Youth Packable
Jacket



95 CT1081
Youth Short Sleeve
Jersey Tee



95 CT1751
Youth Long Sleeve
Jersey Tee



95 C82105
Youth Classic
Mesh Short

	XS	S	M	L	XL
AGE	4-5	6-7	7-8	10-12	14-16
HEIGHT	39" - 48"	45"-54"	51"-57"	54"-60"	57"-62"
WEIGHT	35-55 lbs	45-72 lbs	65-84 lbs	72-96 lbs	88-108 lbs



YOUTH CHAMPION POWERBLEND® FULL ZIP

CS1285 | XS-XL

- 50% cotton / 50% polyester
- Double layer hood
- Covered zipper
- Kanga pocket
- Art #: **APC03795410 P2 FCX**



YOUTH CHAMPION POWERBLEND® HOOD

CS1271 | XS-XL

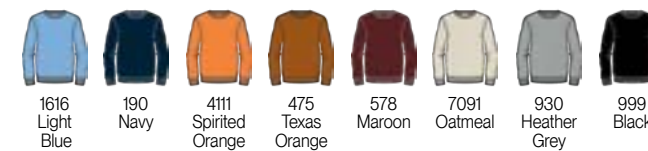
- 50% cotton / 50% polyester
- Art #: **APC03795955 X2 FC2**



YOUTH CHAMPION POWERBLEND® CREW

CS1221 | S-XL

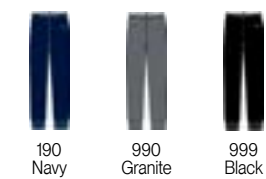
- 50% cotton / 50% polyester
- Art #: **APC03795405 P2 FC2**



YOUTH CHAMPION POWERBLEND® JOGGER

CP2027 | XS- XL

- 50% cotton / 50% polyester
- 1x1 rib at cuff and ankle length
- Side seam pocket bags
- Self fabric and elastic waistband
- Art #: **APC03795412 P1 LL**





YOUTH REVERSE WEAVE CREW

CS5030 | XS-XL

- 80% cotton / 20% polyester heavyweight fleece
- Double layer rib knit trim at neck, cuffs, waist and side panels
- Art #: **APC03795409 P1 FC2**



940
Silver
Grey

YOUTH PACKABLE JACKET

CB1021 | XS-XL

- 100% polyester micro poplin fabric with water resistant coating
- Open bottom
- Scuba collar with hood
- Can be packed into front pocket
- Specialty hang tag calls out packing capabilities
- Art #: **APC03795957 X2 LC**



1616 Light Blue
190 Navy
536 Classic Red
578 Maroon
972 Graphite
999 Black



YOUTH SHORT SLEEVE JERSEY TEE

CT1081 | XS-XL

- 100% cotton jersey
- 950 is 90% cotton / 10% polyester and 990 is 50% cotton / 50% polyester
- Heat transfer back neck label
- Art #: **APC03795406 X3 FC2**



YOUTH LONG SLEEVE JERSEY TEE

CT1751 | XS-XL

- 100% cotton jersey
- 950 is 90% cotton / 10% polyester
- Heat transfer back neck label
- Art #: **APC03795954 X2 FC2**



YOUTH CLASSIC MESH SHORT

C82105 | S-XL

- 100% polyester mesh
- Encased elastic waistband
- Side pockets and vents
- Art #: **APC03795403 X2 LL**



190 Navy
9901 Granite
999 Black

GRAPHIC SHOP
YOUTH COLLECTION

GRAPHIC SHOP
YOUTH COLLECTION



APC03799418
P1 / FC2 / BK



APC03801939
X3 / FC2 / BK, WH, TG



APC03802154
X2 / FC2 / WAT, HPG



APC03799541
P1 / FC2 / WBL



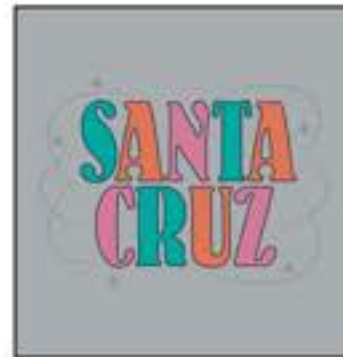
APC03799393
X3 / FC2 / WH, SGO, BRE



APC03799460
P2 / FC2 / CV, GPH



APC03799543
X2 / FC3 / SBT, CWA



APC03799542
P5 / FC2 / BG, BIT, FUS, NY



APC03799424
P1 / FC2 / TBL



APC03801952
P4 / FC2 / IN, POL, WH, EV



APC03801946
P4 / FC2 / IN, ML, KLR, CG



APC03449110
X3 / FC2 / CIT, OXG, WH



APC03799419
P1 / FC2 / MNY



APC03799494
X3 / FC2 / SHL, RA, WH



APC03807038
P4 / FC2 / WIN, GRH, PB, CWA



APC03799618
X2 / FC2 / SAF, DBR



APC03801889
P2 / FC2 / WGP, GR



APC03799415
X3 / FC2 / WH, GO, DB



APC03799490
X3 / FC2 / CIT, WH, EME



APC03799492
X2 / FC2 / WH, TBL



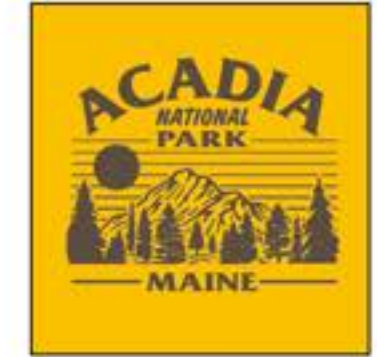
APC03799493
X2 / FC2 / WH, MNY



APC03553098
P4 / FC2 / CNY, WGO, WR, GC



APC03807039
P1 / FC2 / NO



APC03807040
P1 / FC2 / BZ

COLOR GUIDE: GARMENT, INK & THREAD

INK-Light Tonal=N/A
INK-Color on Color=WH
INK-Dark Tonal=SI

THREAD-Light Tonal=N/A
THREAD-Color on Color=WH
THREAD-Dark Tonal=DS

000 WHITE

INK-Light Tonal=N/A
INK-Color on Color=ACA
INK-Dark Tonal=CLR

THREAD-Light Tonal=N/A
THREAD-Color on Color=RB
THREAD-Dark Tonal=N/A

539 CARDINAL

INK-Light Tonal=MA
INK-Color on Color=DMA
INK-Dark Tonal=N/A

THREAD-Light Tonal=N/A
THREAD-Color on Color=RW
THREAD-Dark Tonal=N/A

578 MAROON

INK-Light Tonal=DCT
INK-Color on Color=VC
INK-Dark Tonal=DMA

THREAD-Light Tonal=CAR
THREAD-Color on Color=RB
THREAD-Dark Tonal=RW

588 GARNET

INK-Light Tonal=SGP
INK-Color on Color=WGP
INK-Dark Tonal=N/A

THREAD-Light Tonal=AFV
THREAD-Color on Color=INK
THREAD-Dark Tonal=N/A

630 PURPLE

INK-Light Tonal=BRE
INK-Color on Color=BAY
INK-Dark Tonal=TBL

THREAD-Light Tonal=WAT
THREAD-Color on Color=BAY
THREAD-Dark Tonal=TBL

1045 BLUE BREEZE

INK-Light Tonal=ICE
INK-Color on Color=PMS2165
INK-Dark Tonal=WIN

THREAD-Light Tonal=ICE
THREAD-Color on Color=SBR
THREAD-Dark Tonal=TI

1103 WILDFLOWER PALE BLUE

INK-Light Tonal=CG
INK-Color on Color=CHB
INK-Dark Tonal=WIN

THREAD-Light Tonal=MDT
THREAD-Color on Color=WAT
THREAD-Dark Tonal=TI

1134 DENIM JACKET BLUE

INK-Light Tonal=MDT
INK-Color on Color=DBL
INK-Dark Tonal=BAY

THREAD-Light Tonal=CHB
THREAD-Color on Color=WB
THREAD-Dark Tonal=BAY

1616 LIGHT BLUE

INK-Light Tonal=AFV
INK-Color on Color=WGP
INK-Dark Tonal=N/A

THREAD-Light Tonal=MTP
THREAD-Color on Color=DP
THREAD-Dark Tonal=N/A

680 C. PURPLE

INK-Light Tonal=N/A
INK-Color on Color=DP
INK-Dark Tonal=N/A

THREAD-Light Tonal=MTP
THREAD-Color on Color=INK
THREAD-Dark Tonal=N/A

695 DEEP PURPLE

INK-Light Tonal=N/A
INK-Color on Color=PMS 7444
INK-Dark Tonal=BV

THREAD-Light Tonal=N/A
THREAD-Color on Color=TLR
THREAD-Dark Tonal=CVI

6017 URBAN LILAC

INK-Light Tonal=N/A
INK-Color on Color=FRT
INK-Dark Tonal=TAU

THREAD-Light Tonal=N/A
THREAD-Color on Color=OAK
THREAD-Dark Tonal=EA

7010 NEW COCOA BUTTER

INK-Light Tonal=BAY
INK-Color on Color=TBL
INK-Dark Tonal=NY

THREAD-Light Tonal=BAY
THREAD-Color on Color=MN
THREAD-Dark Tonal=CAL

1818 ROYAL

INK-Light Tonal=WIN
INK-Color on Color=MNY
INK-Dark Tonal=N/A

THREAD-Light Tonal=WIN
THREAD-Color on Color=NY
THREAD-Dark Tonal=N/A

188 NAVY HEATHER

INK-Light Tonal=WIN
INK-Color on Color=MNY
INK-Dark Tonal=N/A

THREAD-Light Tonal=WIN
THREAD-Color on Color=NY
THREAD-Dark Tonal=N/A

190 NAVY

INK-Light Tonal=WIN
INK-Color on Color=SG
INK-Dark Tonal=PMS 5503

THREAD-Light Tonal=N/A
THREAD-Color on Color=РАН
THREAD-Dark Tonal=SG

2086 NIMBUS GREEN

INK-Light Tonal=WH
INK-Color on Color=ASH
INK-Dark Tonal=OXG

THREAD-Light Tonal=WH
THREAD-Color on Color=ST
THREAD-Dark Tonal=PGY

7091 OATMEAL HEATHER

INK-Light Tonal=CHM
INK-Color on Color= PMS 2318
INK-Dark Tonal= N/A

Thread-Light Tonal= AZG
Thread-Color on Color= BRS
Thread-Dark Tonal= BR

7202 BRIEFLY BROWN

INK-Light Tonal=N/A
INK-Color on Color= VAN
INK-Dark Tonal= ASH

Thread-Light Tonal= N/A
Thread-Color on Color= CV
Thread-Dark Tonal= N/A

740 WHITE ALABASTER

INK-Light Tonal=BZ
INK-Color on Color=DBR
INK-Dark Tonal=N/A

THREAD-Light Tonal=MCA
THREAD-Color on Color=WAL
THREAD-Dark Tonal=N/A

775 BROWN

INK-Light Tonal=N/A
INK-Color on Color=EME
INK-Dark Tonal=GR

THREAD-Light Tonal=N/A
THREAD-Color on Color=GR
THREAD-Dark Tonal=SMU

234 KELLY GREEN

INK-Light Tonal=EV
INK-Color on Color=DG
INK-Dark Tonal=N/A

THREAD-Light Tonal=BKG
THREAD-Color on Color=BTG
THREAD-Dark Tonal=N/A

256 DARK GREEN

INK-Light Tonal=EV
INK-Color on Color=DG
INK-Dark Tonal=N/A

THREAD-Light Tonal=BKG
THREAD-Color on Color=BTG
THREAD-Dark Tonal=N/A

285 FIELD GREEN

INK-Light Tonal=WIL
INK-Color on Color=PMS7763
INK-Dark Tonal=N/A

THREAD-Light Tonal=PGN
THREAD-Color on Color=MGN
THREAD-Dark Tonal=TYM

2009 CARGO OLIVE

INK-Light Tonal=N/A
INK-Color on Color=PMS7527
INK-Dark Tonal=BCH

THREAD-Light Tonal=CCH
THREAD-Color on Color=ST
THREAD-Dark Tonal=EA

798 PEBBLESTONE

INK-Light Tonal=N/A
INK-Color on Color=PMS2127
INK-Dark Tonal=WGD

THREAD-Light Tonal=N/A
THREAD-Color on Color=N/A
THREAD-Dark Tonal=DCM

9028 SILVER SPOTLIGHT

INK-Light Tonal=N/A
INK-Color on Color=OXG
INK-Dark Tonal=MD

THREAD-Light Tonal=N/A
THREAD-Color on Color=NIK
THREAD-Dark Tonal=DGF

930 HEATHER GREY

INK-Light Tonal=N/A
INK-Color on Color=OXG
INK-Dark Tonal=MD

THREAD-Light Tonal=N/A
THREAD-Color on Color=NIK
THREAD-Dark Tonal=DGF

939 ACTIVE GREY

INK-Light Tonal=N/A
INK-Color on Color=HNY
INK-Dark Tonal=CI

THREAD-Light Tonal=N/A
THREAD-Color on Color=N/A
THREAD-Dark Tonal=N/A

3012 BOLD HYTOP GOLD

INK-Light Tonal=N/A
INK-Color on Color=SGO
INK-Dark Tonal=GO

THREAD-Light Tonal=N/A
THREAD-Color on Color=PAR
THREAD-Dark Tonal=MYW

338 YELLOW CAB

INK-Light Tonal=N/A
INK-Color on Color=GO
INK-Dark Tonal=KA

THREAD-Light Tonal=N/A
THREAD-Color on Color=MYW
THREAD-Dark Tonal=KA

377 C. GOLD

INK-Light Tonal=N/A
INK-Color on Color=RN
INK-Dark Tonal=STG

THREAD-Light Tonal=N/A
THREAD-Color on Color=TN
THREAD-Dark Tonal=SW

373 VEGAS GOLD

INK-Light Tonal=N/A
INK-Color on Color=N/A
INK-Dark Tonal=OXG

THREAD-Light Tonal=N/A
THREAD-Color on Color=CSI
THREAD-Dark Tonal=NIK

940 SILVER GREY

INK-Light Tonal=OXG
INK-Color on Color=MD
INK-Dark Tonal=CH

THREAD-Light Tonal=NIK
THREAD-Color on Color=DGF
THREAD-Dark Tonal=CH

948 GUNSMOKE HEATHER

INK-Light Tonal=N/A
INK-Color on Color=OXG
INK-Dark Tonal=MD

THREAD-Light Tonal=N/A
THREAD-Color on Color=NIK
THREAD-Dark Tonal=DGF

950 OXFORD HEATHER

INK-Light Tonal=N/A
INK-Color on Color=OXG
INK-Dark Tonal=MD

THREAD-Light Tonal= N/A
THREAD-Color on Color= NIK
THREAD-Dark Tonal= DGF

955 HERITAGE GREY

INK-Light Tonal=N/A
INK-Color on Color=OR
INK-Dark Tonal=NO

THREAD-Light Tonal=N/A
THREAD-Color on Color=MND
THREAD-Dark Tonal=RU

465 ORANGE

INK-Light Tonal=SAF
INK-Color on Color=TO
INK-Dark Tonal=N/A

THREAD-Light Tonal=HAR
THREAD-Color on Color=TXT
THREAD-Dark Tonal=TB

475 TEXAS ORANGE

INK-Light Tonal=WGO
INK-Color on Color=PMS151
INK-Dark Tonal=N/A

THREAD-Light Tonal=MNG
THREAD-Color on Color=DO
THREAD-Dark Tonal=MND

4111 SPIRITED ORANGE

INK-Light Tonal=N/A
INK-Color on Color=MEM
INK-Dark Tonal=FUS

THREAD-Light Tonal=CUP
THREAD-Color on Color=CMB
THREAD-Dark Tonal=PK

5031 FEATHER PINK

INK-Light Tonal=N/A
INK-Color on Color=PER
INK-Dark Tonal=BK

THREAD-Light Tonal=NIK
THREAD-Color on Color=DG
THREAD-Dark Tonal=BK

956 TITANIUM

INK-Light Tonal=HGY
INK-Color on Color=MD
INK-Dark Tonal=CH

THREAD-Light Tonal=NIK
THREAD-Color on Color=DGF
THREAD-Dark Tonal=CH

972 GRAPHITE

INK-Light Tonal=MD
INK-Color on Color=CH
INK-Dark Tonal=BK

THREAD-Light Tonal=NIK
THREAD-Color on Color=CH
THREAD-Dark Tonal=BK

990 GRANITE HEATHER

INK-Light Tonal=HGY
INK-Color on Color=N/A
INK-Dark Tonal=BK

THREAD-Light Tonal=NIK
THREAD-Color on Color=DGF
THREAD-Dark Tonal=BK

9901 GRANITE

INK-Light Tonal=N/A
INK-Color on Color=FUS
INK-Dark Tonal=POS

THREAD-Light Tonal=CMB
THREAD-Color on Color=FUS
THREAD-Dark Tonal=CSB

5101 MOONLIGHT MAUVE

INK-Light Tonal=N/A
INK-Color on Color=FUS
INK-Dark Tonal=POS

THREAD-Light Tonal=CMB
THREAD-Color on Color=FUS
THREAD-Dark Tonal=CSB

5108 HEIRLOOM PINK

INK-Light Tonal=N/A
INK-Color on Color=SCR
INK-Dark Tonal=SRD

THREAD-Light Tonal=N/A
THREAD-Color on Color=RD
THREAD-Dark Tonal=MA

529 SCARLET

INK-Light Tonal=N/A
INK-Color on Color=CR
INK-Dark Tonal=ACA

THREAD-Light Tonal=RD
THREAD-Color on Color=CR
THREAD-Dark Tonal=CA

536 CLASSIC RED

INK-Light Tonal=CH
INK-Color on Color=BK
INK-Dark Tonal=N/A

THREAD-Light Tonal=DGF
THREAD-Color on Color=BK
THREAD-Dark Tonal=N/A

999 BLACK

Champion®

▶▶ CHAMPION FALL 2024 RESORT

APC003796378 X2BA2



9700 Commerce Parkway Lenexa, KS 66219
www.gearforsports.com 888 800 2529 913 693 3996
All designs remain the property of GEAR FOR SPORTS®.
A HanesBrands Company

GEAR FOR SPORTS® is a fully Accredited Participating Company with the FLA. This non-profit group is dedicated to improving conditions in factories worldwide. We are committed to FLA labor standards throughout our entire supply chain.

24FA_CR_CATALOG_RESORT



© 2023 HANESBRANDS INC. ALL RIGHTS RESERVED