

Champion[®]

▶▶ CHAMPION FALL 2024 MILB



MILB





CHAMPION
WHAT MOVES YOU

CONTENTS

MEN'S COLLECTION	4
Powerblend	8
Core Tees & Shorts	14
Outerwear & Polo	20
Garment Dye	24
Reverse Weave	28
Triumph	32
WOMEN'S COLLECTION	36
Powerblend	38
Core Tees	44
Soft Touch	52
Reverse Weave	54
Triumph	56
YOUTH COLLECTION	62
COLOR GUIDE	66

MEN'S COLLECTION

	XS	S	M	L	XL	2XL
CHEST (IN)	30-32	32-34	36-38	40-42	44-46	48-50
WAIST (IN)	26-28	28-30	32-34	36-38	40-42	44-46



22 CB1012
Packable
Jacket



22 CB1015
Full Zip
Lightweight Jacket



23 CT3009
Men's Micro Mesh
1/4 Zip



23 CT3022
Men's Micro Mesh
Sport Polo



23 CT3012
Men's Textured
Solid Polo

▶▶ POWERBLEND



7 CS1220
Powerblend®
Crew



8 CS2071
Powerblend®
Hood



9 CS2083
Powerblend®
1/4 Zip



9 CS2072
Powerblend®
Full Zip



10 C82075
Powerblend®
7" Short

▶▶ GARMENT DYE



25 GD101C
Men's Garment Dyed
RW Hood



26 GD149C
Men's Garment Dyed
RW Crew



27 CD10C
Men's Garment Dyed
SS Tee



27 CD20C
Men's Garment Dyed
LS Tee

▶▶ REVERSE WEAVE



29 CS3050
Men's Reverse
Weave Crew

▶▶ CORE TEES & SHORTS



10 CP2071
Powerblend®
Banded Pant



11 CP2081
Powerblend® Open
Bottom Pant



11 CP2072
Powerblend®
Fleece Jogger Pant

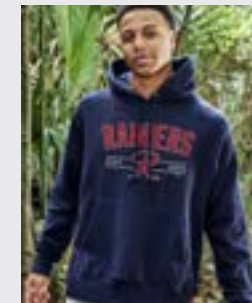


16 CT1000
Jersey Short
Sleeve Tee



17 CT1730
Jersey Long
Sleeve Tee

▶▶ TRIUMPH



30 CS3051
Men's Reverse
Weave Hood



30 RW10C
Men's Reverse
Weave Sweatpant



31 CS3358
Men's Reverse Weave
Yarn Dye Rib Crew



31 CS3044
Men's Reverse Weave
Yarn Dye Rib Crew



33 CS0331
Men's Triumph Fleece
Raglan Crew

▶▶ OUTERWEAR & POLOS



18 C81255
Men's Classic
Mesh Short



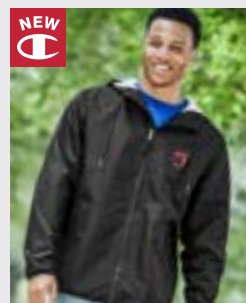
19 C81001
Men's Woven
5" Short



19 CT1028
Men's Athletic Short
Sleeve Tee



21 CB1074
Men's Explorer Full
Zip Jacket



21 CB1075
Men's Heavyweight
Champion Jacket



33 CS0332
Men's Triumph Fleece
Raglan 1/2 Zip



34 CS0337
Men's Triumph
Fleece Hood



34 CP0333
Men's Triumph
Fleece Jogger



35 CP0225
Men's Tri-Blend
Long Sleeve Tee



35 CT1060
Men's Ultimate
Triblend Tee



▶▶ CHAMPION FALL 2024 MILB APC03802374 P2 FC2 APC03802458 P1 FC2

MEN'S POWERBLEND



CHAMPION POWERBLEND® CREW

CS1220 | XS-3XL

3XL AVAILABLE IN: 1818, 190, 256, 529, 539, 578, 930, 990, 999

- 50% Cotton / 50% Polyester powerblend fleece
- Classic fitting set-in sleeve silhouette
- Rib knit at neck, cuffs and waistband
- Authentic C Logo patch on left sleeve
- Art #: **APC03802029 X5 FC**





CHAMPION POWERBLEND® HOOD

CS2071 | XS -3XL

3XL AVAILABLE IN: 1818, 190, 256, 529, 539, 578, 930, 999

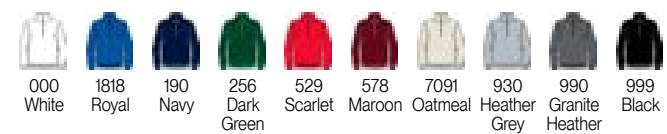
- 50% Cotton / 50% Polyester powerblend fleece
- Classic fitting set-in sleeve silhouette
- Double layer hood with drawcord
- Front pouch pocket
- Rib knit at cuffs and waistband
- Authentic C Logo patch on left sleeve
- Art #: **APC03736807 P4 FC2**



CHAMPION POWERBLEND® 1/4 ZIP

CS2083 | XS - 2XL

- 50% Cotton / 50% Polyester powerblend fleece
- Classic fitting set-in sleeve silhouette
- Covered zipper at center front
- Finished back neck seam
- Rib knit at cuffs and waistband
- Authentic C Logo patch on left sleeve
- Art #: **APC03802429 X4 LC**



CHAMPION POWERBLEND® FULL ZIP

CS2072 | XS-2XL

- 50% Cotton / 50% Polyester powerblend fleece
- Classic fitting set-in sleeve silhouette
- Double layer hood with drawcord
- Covered Zipper at Center Front
- Front pouch pocket
- Rib knit at cuffs and waistband
- Authentic C Logo patch on left sleeve
- Art #: **APC03730993 X3 LC**





CHAMPION POWERBLEND® 7" SHORT

CP2075 | XS - 2XL

- 50% Cotton / 50% Polyester powerblend fleece
- Comfortable encased elastic waistband with interior drawcord
- Hand pockets lined with lightweight jersey
- Modern 7" inseam with raw edge detail at hem
- Authentic C Logo patch at left hip
- Art #: **APC03802375 X3 LL**



CHAMPION POWERBLEND® BANDED PANT

CP2071 | XS-2XL

- 50% Cotton / 50% Polyester powerblend fleece
- Comfortable, everyday fit
- Hand pockets lined with lightweight jersey
- Inside drawcord at waistband
- Covered elastic ankle
- Authentic C Logo patch at left hip
- Art #: **APC03802032 X5 LL**



CHAMPION POWERBLEND® OPEN BOTTOM PANT

CP2081 | XS-2XL

- 50% Cotton / 50% Polyester powerblend fleece
- Comfortable, everyday fit
- Hand pockets lined with lightweight jersey
- Inside drawcord at waistband
- Authentic C Logo patch at left hip
- Art #: **APC03748630 X2 LL**



CHAMPION POWERBLEND® FLEECE JOGGER PANT

CP2072 | XS-2XL

- 50% Cotton / 50% Polyester powerblend fleece
- 31" inseam with rib cuff at ankle
- Hand pockets lined with lightweight jersey
- Inside drawcord at waistband
- Authentic C Logo patch at left hip
- Art #: **APC03739768 X2 LL**



OUTFITTING
MEN'S POWERBLEND SETS



CORE

TEES & SHORTS





JERSEY SHORT SLEEVE TEE

CT1000 | S-3XL
1134, 2009, 4111, 5108, 6107, and 7202 S-2XL only

- 100% cotton jersey
- 950 is 90% cotton / 10% polyester
- 990 is 50% cotton / 50% polyester
- Classic Fitting Silhouette with set in sleeves and rib collar
- Heat transfer label at back neck

• Art #: **APC03605246 X1 FC2**



JERSEY LONG SLEEVE TEE

CT1730 | S-3XL, 3XL AVAILABLE IN: 000, 1818, 190, 256, 529, 539, 578, 950, 990, 999

- 100% cotton jersey
- 950 is 90% cotton / 10% polyester
- 990 is 50% cotton / 50% polyester
- Classic Fitting Silhouette with set in sleeves
- Rib Collar and Cuffs
- Heat transfer label at back neck

• Art #: **APC03607785 X2 FC**
APC03607787 X2 SL





MEN'S CLASSIC MESH SHORT

C81255 | S-3XL, 3XL in 190, 939, 999

- 100% polyester mesh
- 8.5" inseam
- Quickcord waistband with inside Champion branding
- Side pockets and vents
- Art #: **APC03763362 X4 FC2 APC03802429 X4 LL**



CHAMPION
STATE OF
MIND



MEN'S WOVEN 5" SHORT

C81001 | S-2XL

- 92% Polyester, 8% Elastane
- Elasticated Waistband
- Interior Drawcord
- Slanted Side Pockets
- Vented Hem
- Back Yoke
- 5" Inseam
- Art #: **APC03802376 P1 LL**



MEN'S ATHLETIC SHORT SLEEVE TEE

CT1028 | S-3XL

- 100% polyester
- Self collar
- Art #: **APC03802380 X3 FC2**





OUTERWEAR & POLOS



CHAMPION MEN'S EXPLORER FULL ZIP JACKET

CB1074 | XS - 2XL

- 75% Recycled Polyester, 25% Polyester Micro Fleece Body
- 100% Polyester Woven Overlays
- Zippered Chest Pocket
- Hand Pockets
- Binding at Cuff and Waistband
- CF Zipper with Ticked Cord puller
- Art #: **AEC03703968 E LC**



MEN'S HEAVYWEIGHT CHAMPION JACKET

CB1075 | XS - 3XL, 3XL available in 190, 9032, and 999

- 100% Textured Polyester Woven Outer shell
- 61% Polyester, 27% Cotton, 12% Rayon Fleece Liner
- 3 Piece Hood
- Poly Drawcord with Metal Tip
- Binding at Cuff and Waistband
- CF Zipper with Pull tab
- Kanga Front Pocket
- Raglan Sleeves
- Interior Embroidery Zipper
- Art #: **AEC03701908 E LC**





PACKABLE JACKET

CB1012 | XS-3XL, 3XL available in 190, 972, 999

- 100% polyester micro poplin fabric with water resistant coating
- Open bottom with shock cords
- Scuba collar with hood
- Can be packed into front pocket
- Elasticated cuff to block wind
- Specialty hang tag calls out packing capabilities
- Art #: **APC03793130 X4 LC**



FULL ZIP LIGHTWEIGHT JACKET

CB1015 | XS-3XL, 3XL available in 190, 972, 999

- 100% polyester micro poplin fabric with water resistant coating
- Open bottom with shock cords
- Scuba collar with hood including shock cords
- Lower front on-seam pockets
- Elasticated cuff to block wind
- Art #: **APC03610120 X2 LC APC03610114 X2 VS**



MEN'S MICRO MESH 1/4 ZIP

CT3009 | S-2XL

- 93% polyester, 7% spandex heathered micro mesh
- Stand collar with exposed zipper, featuring self-fabric stop at bottom and mini zipper guards at top
- Rolled forward side seams for a more active fit
- Straight body fit with side vents for added movement
- Art #: **AEC03697745 E LC**



MEN'S MICRO MESH SPORT POLO

CT3022 | S-2XL

- 93% polyester, 7% spandex heathered micro mesh
- Self-fabric collar and three button placket
- Standard finish sleeve and hem
- Straight body fit with side vents for added movement
- Art #: **AEC03778740 E LC**



MEN'S TEXTURED SOLID POLO

CT3012 | S-3XL

3XL available in 000, 190, 956 and 999

- 100% polyester textured stripe jacquard
- Rib knit collar
- 3 button placket
- Side vents
- Art #: **AEC03610054 E LC**





GARMENT DYE



CHAMPION MEN'S GARMENT DYED RW HOOD

GD101C | S - 2XL

- 91% Cotton, 9% Polyester Reverse Weave fleece with Garment dye for soft hand and washed look
- 2-Piece Self-lined hood
- Knotted Drawcord
- Kanga Pocket
- Rib at Side Panels, Cuff and Waistband
- Relaxed fit
- Art #: **APC03802391 P1 FC2**





CHAMPION THE TIDES



CHAMPION MEN'S GARMENT DYED RW CREW

GD149C | S - 2XL

- 91% Cotton, 9% Polyester Reverse Weave fleece with Garment dye for soft hand and washed look
- Rib at Collar, Side Panels, Cuff and Waistband
- Relaxed fit
- Art #: **APC03802392 P1 FC2**



CHAMPION MEN'S GARMENT DYED SS TEE

CD10C | S - 2XL

- 100% Cotton Jersey with Garment dye for soft hand and washed look
- Rib at Collar
- Relaxed fit
- Art #: **APC03802388 P2 FC2**



CHAMPION MEN'S GARMENT DYED LS TEE

CD20C | S - 2XL

- 100% Cotton Jersey with Garment dye for soft hand and washed look
- Rib at Collar and Cuff
- Relaxed fit
- Art #: **APC03802405 P1 FC3**





MEN'S REVERSE WEAVE



MEN'S REVERSE WEAVE CREW
CS3050 | XS - 3XL, 3XL AVAILABLE IN: 1616

- 80% cotton / 20% polyester heavyweight fleece
- Fabric cut on the cross-grain to resist vertical shrinkage
- Signature rib side panels for mobility
- Stretch rib at collar, cuffs, and waistband
- Art #: **APC03802386 P5 FC2**





MEN'S REVERSE WEAVE HOOD

CS3051 | XS-3XL
3XL AVAILABLE IN: 190, 940, 950. XS AVAILABLE IN 940

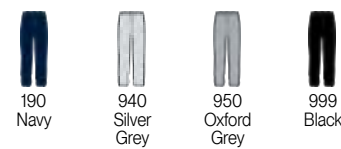
- 80% cotton / 20% polyester heavyweight fleece
- Fabric cut on the cross-grain to resist vertical shrinkage
- Signature rib side panels for mobility
- Two-ply hood with cotton draw cords
- Stretch rib at cuffs and waistband
- Pouch pocket
- Art #: **APC03739823 X2 FC2**



CHAMPION MEN'S REVERSE WEAVE SWEATPANT

RW10C | S - 2XL

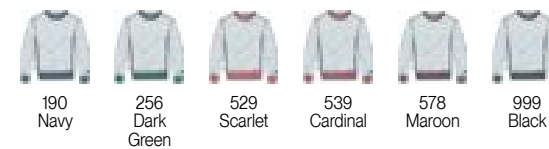
- 80% Cotton, 20% Polyester Reverse Weave Fleece
- Elasticated Waistband
- Interior Drawcord, knotted
- Side seam pockets
- Banded bottom
- Relaxed fit
- Art #: **APC03709546 X2 LL**



MEN'S REVERSE WEAVE YARN DYE RIB CREW

CS3358 | XS-2XL

- 80% cotton / 20% polyester heavyweight fleece
- Fabric cut on the cross-grain to resist vertical shrinkage
- Signature rib side panels for mobility
- Throwback striped rib at collar, cuffs, and waistband
- Body color is always silver grey, color name represents stripes in trim
- Art #: **APC03802387 P5 FC2**



MEN'S REVERSE WEAVE FULL ZIP HOOD

CS3044 | XS-2XL

- 80% cotton / 20% polyester heavyweight fleece
- Fabric cut on the cross-grain to resist vertical shrinkage
- Traditional Reverse Weave styling with rib side panels for movement
- Metal zipper at center front
- Pouch pocket on lower body
- Classic Reverse Weave fleece fit
- Art #: **APC03802384 P1 FCX**





MEN'S TRIUMPH



CHAMPION MEN'S TRIUMPH FLEECE RAGLAN CREW

CS0331 | XS-2XL

- Super soft 47% polyester, 39% cotton, 14% rayon triblend fleece
- Classic raglan silhouette with comfortable all-day fit
- 2x2 rib at collar, cuffs and bottom band
- Art #: **APC03802403 P1 FC2**



CHAMPION MEN'S TRIUMPH FLEECE RAGLAN 1/2 ZIP

CS0332 | XS-2XL

- Super soft 47% polyester, 39% cotton, 14% rayon triblend fleece
- Classic raglan silhouette with stand collar
- Color matched reverse coil zipper at center front
- 2x2 rib cuffs and bottom band
- Art #: **AEC03701908 E LC**





MEN'S TRIUMPH FLEECE HOOD

CS0337 | XS-2XL

- 47% polyester, 39% cotton, 14% rayon fleece
- 2x2 rib at cuffs and waistband
- Raglan sleeve and classic fleece body fit
- Kangaroo pocket on front body
- Art #: **APC03802405 P1 FC3**



MEN'S TRIUMPH FLEECE JOGGER

CP0333 | XS-2XL

- 47% polyester, 39% cotton, 14% rayon fleece
- 2x2 rib at cuffs and waistband
- Classic fitting jogger with drawcord at waist
- Hand pockets with jersey pocket bags
- Art #: **APC03802404 X2 LL**



MEN'S TRI-BLEND LONG SLEEVE TEE

CT0225 | S-2XL

- 50% polyester / 37% cotton / 13% rayon jersey
- 1x1 rib at collar and cuffs
- Set in long sleeve and straight body
- Ladder stitching at bottom opening
- Art #: **APC03802406 P1 FC2**



MEN'S ULTIMATE TRIBLEND TEE

CT1060 | S-2XL

- 50% polyester / 37% cotton / 13% rayon jersey
- 1x1 rib at collar
- Set in short sleeve with slightly shorter, more modern fit
- Ladder stitching at sleeve hems and bottom opening
- Art #: **APC03732790 P5 FC2**



WOMEN'S COLLECTION

	XS	S	M	L	XL	2XL
CHEST (IN)	30 - 31½	33 - 34½	35 - 36½	38 - 39½	41 - 42½	44
WAIST (IN)	22½ - 24	25½ - 27	27½ - 29	30½ - 32	33½ - 35	36½
HIP (IN)	32½ - 34	35½ - 37	37½ - 39	40½ - 42	43½ - 45	46½



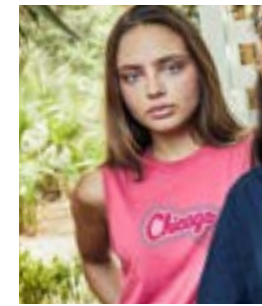
49 C6043
Women's Core
Oversized Tee



50 C6040
Women's Core
V Neck Tee

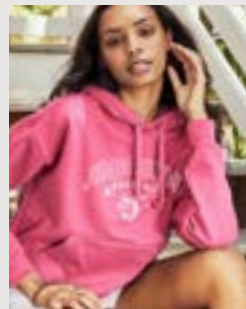


50 C6039
Women's Core
Short Sleeve Tee



51 C6042
Women's Core
Muscle Tank

▶▶ POWERBLEND



40 S760
Powerblend®
Women's Hood



41 S650
Powerblend®
Women's Crew



42 P950
Powerblend®
Women's Pant

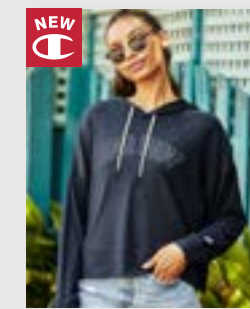


42 S856
Powerblend®
Women's Full Zip

▶▶ SUEDED SOFT TOUCH



53 C4002
Women's Sueded
Touch Crew



53 C4003
Women's Sueded
Touch Hood

▶▶ REVERSE WEAVE



55 C3007
Women's Reverse Weave
Cropped Crew

▶▶ CORE TEES



42 P940
Powerblend®
Women's Short



43 S456
Powerblend® Open
Women's 1/4 Zip



46 C6054
Women's Crop
Scoop Cami



46 6055
Women's Core
Baby Tee



55 C3002
Women's Reverse Weave
Fleece Hood

▶▶ TRIUMPH



57 C6204
Champion Triumph
Women's Fleece Hood



57 C6203
Women's Triumph
Fleece Pants



58 C6200
Women's Triumph
Long Sleeve Fleece Crew



47 C6009
Women's Crop Tank
Top



47 C7791
Women's
Mesh Short



48 C6003
Women's Boyfriend
Crop Tee



48 C6024
Women's Boyfriend Crop
Long Sleeve Tee



59 C6016
Women's Tri-Blend
V-Neck Tee





WOMEN'S
**POWER
BLEND**



▶▶ CHAMPION FALL 2024 MILB

APC003756451 X2 FC2 APC003756362 X1LC



CHAMPION POWERBLEND® WOMEN'S CREW
S650 | XS-2XL

- 50% cotton / 50% polyester
- Rib collar, cuffs, waistband
- Relaxed fit
- Modern length
- Art #: **APC03756451 X2 FC2**



CHAMPION POWERBLEND® WOMEN'S PANT
P950 | XS-2XL

- 50% cotton / 50% polyester
- Elasticated Waistband and cuff
- Relaxed fit
- Side seam hand pockets
- Interior knotted drawcord
- Art #: **APC03756362 X1 LL**



CHAMPION POWERBLEND® WOMEN'S HOOD
S760 | XS-2XL

- 50% cotton / 50% polyester
- Rib cuffs & waistband
- Relaxed fit
- Modern length
- Jersey lined hood
- Knotted cotton drawcord
- Kangaroo pocket
- Art #: **APC03731797 X1 FC**



CHAMPION YOUR OWN PARADISE



CHAMPION POWERBLEND® WOMEN'S ¼ ZIP

- S456 | XS - 2XL
- 50% cotton / 50% polyester
 - Rib Cuffs & Waistband
 - Relaxed fit
 - Modern Length
 - Kissing Welt Placket
 - Mock Collar
 - Art #: **AEC03703968 E LC**



CHAMPION POWERBLEND® WOMEN'S FULL ZIP

- S856 | XS-2XL
- 50% cotton / 50% polyester
 - Rib cuffs & waistband
 - Relaxed fit
 - Modern length
 - Kissing welt placket
 - Jersey lined hood
 - Knotted Cotton drawcord
 - Kanga pocket
 - Art #: **APC02774056 X5 LC**



CHAMPION POWERBLEND® WOMEN'S SHORT

- P940 | XS-2XL
- 50% cotton / 50% polyester
 - Elasticated Waistband
 - Relaxed fit
 - Side seam hand pockets
 - Knotted drawcord
 - 3" Inseam
 - Art #: **APC02774269 X3 LL**





WOMEN'S CORE
TEES



▶▶ CHAMPION FALL 2024 MILB

APC03694162 P3 FC APC03694163 X3 LL APC03802414 X3 FO2 P1 LL APC03802376 P1 LL



WOMEN'S CROP SCOOP CAMI

C6054 | XS-2XL

- 78% polyester, 22% elastane soft touch jersey
- Bound Armhole and Neckline
- Interior shelf bra
- Art #: **APC03802414 X3 FC2**



CHAMPION WOMEN'S CORE BABY TEE

C6055 | XS - 2XL

- 60% cotton / 40% polyester Jersey
- Set in Rib Collar
- Crew Neckline
- Closer-to-body fit
- 22" FBL
- Art #: **APC03732798 X4 FC**



WOMEN'S CROP TANK TOP

C6009 | XS-2XL

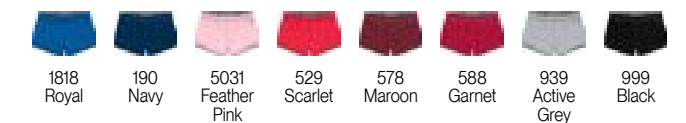
- 90% cotton / 10% spandex cottony, comfortable jersey
- Crew neck with narrow shoulder for modern appeal
- Cropped with next to body fit – Perfect as a layering piece or on its own
- Art #: **APC03694162 P3 LL**



WOMEN'S MESH SHORT

C7791 | XS-2XL

- 100% polyester mesh shell and tricot lining
- Self-fabric and logo elastic waistband
- Standard hem finish with tiny vent
- 3" inseam
- Art #: **APC03694163 X3 LL**



EXPLORE LIKE A CHAMPION



WOMEN'S BOYFRIEND CROP TEE

C6003 | XS-2XL

- 100% cotton jersey
- 950 is 90% cotton / 10% polyester
- Set-in neck rib
- Crop length with oversized "boyfriend" fit

• Art #: **APC03802416 P4 FC3**



WOMEN'S BOYFRIEND CROP LONG SLEEVE TEE

C6024 | XS-2XL

- 100% cotton jersey
- 950 is 90% cotton / 10% polyester
- Set-in neck rib
- Crop length with oversized "boyfriend" fit

• Art #: **APC03802415 P2 FC2**



CHAMPION WOMEN'S CORE OVERSIZED TEE

C6043 | S/M, L/XL

- 60% cotton / 40% polyester jersey
- Set in rib collar
- Crew neckline
- Dropped shoulder
- Oversized fit (2 sizes fit all)
- 29" body length (S/M)

• Art #: **APC03802425 P5 MFC**

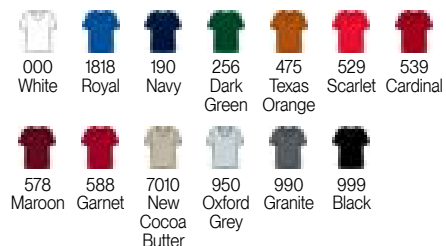




CHAMPION WOMEN'S CORE V NECK TEE

C6040 | XS-2XL

- 60% cotton / 40% polyester jersey
- Set in rib collar
- V neckline
- 25" body length
- Relaxed fit
- Art #: **APC03802417 X3 FC1**



CHAMPION WOMEN'S CORE SHORT SLEEVE TEE

C6039 | XS-2XL

- 60% cotton / 40% polyester jersey
- Set in rib collar
- Crew neckline
- 25" body length
- Relaxed fit
- Art #: **APC03802435 P2 FC2**



CHAMPION WOMEN'S CORE MUSCLE TANK

C6042 | XS-2XL

- 60% cotton / 40% polyester jersey
- Set in rib collar
- Rib detail at slight dropped armhole
- Crew neckline
- 24" body length
- Relaxed fit
- Art #: **APC03739817 X1 FC1**



CHAMPION WOMEN'S CORE LONG SLEEVE TEE

C6041 | XS-2XL

- 60% cotton / 40% polyester jersey
- Set in rib collar
- Rib cuff
- Crew neckline
- 25" body length
- Relaxed fit
- Art #: **APC03739580 X2 FC2**





SUEDED SOFT TOUCH

NEW



CHAMPION WOMEN'S SUEDED TOUCH CREW

C4002 | XS - 2XL

- 88% Polyester, 12% Spandex Sueded fleece
- Set in self collar
- Dropped Shoulder
- Seaming down front/back of sleeve
- Striped twill Neck tape
- Self Cuff and Waistband
- Side vents
- Art #: **APC03802452 P1 FC2**



NEW



CHAMPION WOMEN'S SUEDED TOUCH HOOD

C4003 | XS - 2XL

- 88% Polyester, 12% Spandex Sueded fleece
- 2 piece Hood
- Dropped Shoulder
- Seaming down front/back of sleeve
- Striped twill Neck tape and drawcord
- Self Cuff and Waistband
- Side vents
- Art #: **APC03802453 X1 FC2**





WOMEN'S REVERSE WEAVE



WOMEN'S REVERSE WEAVE CROPPED CREW C3007 | XS-2XL

- 80% cotton / 20% polyester heavyweight fleece
- 1x1 rib at collar, side panels and cuff
- Raw edge at hem
- Cropped Boyfriend fit
- Art #: **APC03802449 P2 FC2 APC03802451 DSP1 DSP**



000
White



940
Silver
Grey

WOMEN'S REVERSE WEAVE FLEECE HOOD C3002 | XS-2XL

- 80% cotton / 20% polyester heavyweight fleece
- 1x1 rib at side panels, waistband and cuff
- Hood with drawcord
- "Boyfriend" fit
- Shorter length
- Art #: **APC03802448 P5 FC2**



940
Silver
Grey



WOMEN'S
TRIUMPH

CHAMPION
*THE ULTIMATE
GETAWAY*

CHAMPION TRIUMPH WOMEN'S FLEECE HOOD

C6204 | XS-2XL

- 47% polyester, 39% cotton, 14% rayon triblend fleece
- Rib cuffs & waistband
- 2 Piece hood
- Relaxed fit
- Modern length
- Kanga pocket
- Art #: **APC03802458 P1 FC2**



WOMEN'S TRIUMPH FLEECE PANTS

C6203 | XS-2XL

- 47% polyester, 39% cotton, 14% rayon
- 2x2 rib at cuffs
- Encased elastic at waistband
- 28" Inseam
- Art #: **APC03802457 X4 LL**





WOMEN'S TRIUMPH LONG SLEEVE FLEECE CREW

C6200 | XS-2XL

- 47% polyester, 39% cotton, 14% rayon
- 2x2 rib at collar, cuffs, and waistband
- Slightly dropped shoulder for comfy girlfriend fit
- Shorter body length that sits right at the waistband
- Art #: **APC03802455 X5 FC2**



WOMEN'S TRI-BLEND V-NECK TEE

C6016 | XS-2XL

- 50% polyester / 37% cotton / 13% rayon jersey
- 1x1 rib at collar
- Set in short sleeve and relaxed body
- Ladder stitching at sleeve and bottom opening
- Art #: **APC03802418 X3 FC2**





YOUTH COLLECTION



62 CS1285
Youth Champion
Powerblend® Full Zip



62 CS1271
Youth Champion
Powerblend® Hood



63 CS1221
Youth Champion
Powerblend® Crew



63 CP2027
Youth Champion
Powerblend® Jogger



64 CS5030
Youth Reverse
Weave Crew



64 CB1021
Youth Packable
Jacket



65 CT1081
Youth Short Sleeve
Jersey Tee



65 CT1751
Youth Long Sleeve
Jersey Tee



65 C82105
Youth Classic
Mesh Short

	XS	S	M	L	XL
AGE	4-5	6-7	7-8	10-12	14-16
HEIGHT	39" - 48"	45"-54"	51"-57"	54"-60"	57"-62"
WEIGHT	35-55 lbs	45-72 lbs	65-84 lbs	72-96 lbs	88-108 lbs



YOUTH CHAMPION POWERBLEND® FULL ZIP

CS1285 | XS-XL

- 50% cotton / 50% polyester
- Double layer hood
- Covered zipper
- Kanga pocket
- Art #: **APC03610123 P2 FCX**

YOUTH CHAMPION POWERBLEND® HOOD

CS1271 | XS-XL

- 50% cotton / 50% polyester
- Art #: **APC02948890 X1 FC**

YOUTH CHAMPION POWERBLEND® CREW

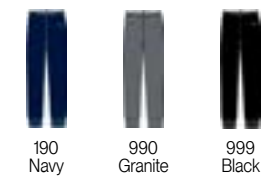
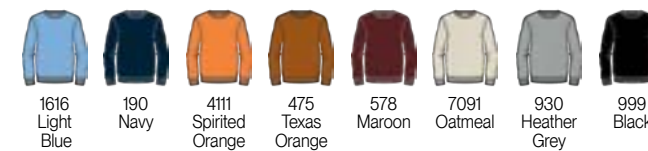
CS1221 | S-XL

- 50% cotton / 50% polyester
- Art #: **APC02839147 WP2 FCX**

YOUTH CHAMPION POWERBLEND® JOGGER

CP2027 | XS- XL

- 50% cotton / 50% polyester
- 1x1 rib at cuff and ankle length
- Side seam pocket bags
- Self fabric and elastic waistband
- Art #: **APC03802404 X2 LL**





YOUTH REVERSE WEAVE CREW

CS5030 | XS-XL

- 80% cotton / 20% polyester heavyweight fleece
- Double layer rib knit trim at neck, cuffs, waist and side panels
- Art #: **APC03802464 P4 FC2**



940
Silver
Grey



YOUTH PACKABLE JACKET

CB1021 | XS-XL

- 100% polyester micro poplin fabric with water resistant coating
- Open bottom
- Scuba collar with hood
- Can be packed into front pocket
- Specialty hang tag calls out packing capabilities
- Art #: **APC03802429 X4 LC**



1616
Light
Blue



190
Navy



536
Classic
Red



578
Maroon



972
Graphite



999
Black



YOUTH SHORT SLEEVE JERSEY TEE

CT1081 | XS-XL

- 100% cotton jersey
- 950 is 90% cotton / 10% polyester and 990 is 50% cotton / 50% polyester
- Heat transfer back neck label
- Art #: **APC03739999 X2 FC2**



YOUTH LONG SLEEVE JERSEY TEE

CT1751 | XS-XL

- 100% cotton jersey
- 950 is 90% cotton / 10% polyester
- Heat transfer back neck label
- Art #: **APC03740658 X1 FC**



YOUTH CLASSIC MESH SHORT

C82105 | S-XL

- 100% polyester mesh
- Encased elastic waistband
- Side pockets and vents
- Art #: **APC03802463 X3 LL**



COLOR GUIDE: GARMENT, INK & THREAD

INK-Light Tonal=N/A
INK-Color on Color=WH
INK-Dark Tonal=SI

THREAD-Light Tonal=N/A
THREAD-Color on Color=WH
THREAD-Dark Tonal=DS

000 WHITE

INK-Light Tonal=N/A
INK-Color on Color=ACA
INK-Dark Tonal=CLR

THREAD-Light Tonal=N/A
THREAD-Color on Color=RB
THREAD-Dark Tonal=N/A

539 CARDINAL

INK-Light Tonal=MA
INK-Color on Color=DMA
INK-Dark Tonal=N/A

THREAD-Light Tonal=N/A
THREAD-Color on Color=RW
THREAD-Dark Tonal=N/A

578 MAROON

INK-Light Tonal=DCT
INK-Color on Color=VC
INK-Dark Tonal=DMA

THREAD-Light Tonal=CAR
THREAD-Color on Color=RB
THREAD-Dark Tonal=RW

588 GARNET

INK-Light Tonal=SGP
INK-Color on Color=WGP
INK-Dark Tonal=N/A

THREAD-Light Tonal=AFV
THREAD-Color on Color=INK
THREAD-Dark Tonal=N/A

630 PURPLE

INK-Light Tonal=BRE
INK-Color on Color=BAY
INK-Dark Tonal=TBL

THREAD-Light Tonal=WAT
THREAD-Color on Color=BAY
THREAD-Dark Tonal=TBL

1045 BLUE BREEZE

INK-Light Tonal=ICE
INK-Color on Color=PMS2165
INK-Dark Tonal=WIN

THREAD-Light Tonal=ICE
THREAD-Color on Color=SBR
THREAD-Dark Tonal=TI

1103 WILDFLOWER PALE BLUE

INK-Light Tonal=CG
INK-Color on Color=CHB
INK-Dark Tonal=WIN

THREAD-Light Tonal=MDT
THREAD-Color on Color=WAT
THREAD-Dark Tonal=TI

1134 DENIM JACKET BLUE

INK-Light Tonal=MDT
INK-Color on Color=DBL
INK-Dark Tonal=BAY

THREAD-Light Tonal=CHB
THREAD-Color on Color=WB
THREAD-Dark Tonal=BAY

1616 LIGHT BLUE

INK-Light Tonal=AFV
INK-Color on Color=WGP
INK-Dark Tonal=N/A

THREAD-Light Tonal=MTP
THREAD-Color on Color=DP
THREAD-Dark Tonal=N/A

680 C. PURPLE

INK-Light Tonal=N/A
INK-Color on Color=DP
INK-Dark Tonal=N/A

THREAD-Light Tonal=MTP
THREAD-Color on Color=INK
THREAD-Dark Tonal=N/A

695 DEEP PURPLE

INK-Light Tonal=N/A
INK-Color on Color=PMS 7444
INK-Dark Tonal=BV

THREAD-Light Tonal=N/A
THREAD-Color on Color=TLR
THREAD-Dark Tonal=CVI

6017 URBAN LILAC

INK-Light Tonal=N/A
INK-Color on Color=FRT
INK-Dark Tonal=TAU

THREAD-Light Tonal=N/A
THREAD-Color on Color=OAK
THREAD-Dark Tonal=EA

7010 NEW COCOA BUTTER

INK-Light Tonal=BAY
INK-Color on Color=TBL
INK-Dark Tonal=NY

THREAD-Light Tonal=BAY
THREAD-Color on Color=MN
THREAD-Dark Tonal=CAL

1818 ROYAL

INK-Light Tonal=WIN
INK-Color on Color=MNY
INK-Dark Tonal=N/A

THREAD-Light Tonal=WIN
THREAD-Color on Color=NY
THREAD-Dark Tonal=N/A

188 NAVY HEATHER

INK-Light Tonal=WIN
INK-Color on Color=MNY
INK-Dark Tonal=N/A

THREAD-Light Tonal=WIN
THREAD-Color on Color=NY
THREAD-Dark Tonal=N/A

190 NAVY

INK-Light Tonal=WIN
INK-Color on Color=SG
INK-Dark Tonal=PMS 5503

THREAD-Light Tonal=N/A
THREAD-Color on Color=РАН
THREAD-Dark Tonal=SG

2086 NIMBUS GREEN

INK-Light Tonal=WH
INK-Color on Color=ASH
INK-Dark Tonal=OXG

THREAD-Light Tonal=WH
THREAD-Color on Color=ST
THREAD-Dark Tonal=PGY

7091 OATMEAL HEATHER

INK-Light Tonal=CHM
INK-Color on Color= PMS 2318
INK-Dark Tonal= N/A

Thread-Light Tonal= AZG
Thread-Color on Color= BRS
Thread-Dark Tonal= BR

7202 BRIEFLY BROWN

INK-Light Tonal=N/A
INK-Color on Color= VAN
INK-Dark Tonal= ASH

Thread-Light Tonal= N/A
Thread-Color on Color= CV
Thread-Dark Tonal= N/A

740 WHITE ALABASTER

INK-Light Tonal=BZ
INK-Color on Color=DBR
INK-Dark Tonal=N/A

THREAD-Light Tonal=MCA
THREAD-Color on Color=WAL
THREAD-Dark Tonal=N/A

775 BROWN

INK-Light Tonal=N/A
INK-Color on Color=EME
INK-Dark Tonal=GR

THREAD-Light Tonal=N/A
THREAD-Color on Color=GR
THREAD-Dark Tonal=SMU

234 KELLY GREEN

INK-Light Tonal=EV
INK-Color on Color=DG
INK-Dark Tonal=N/A

THREAD-Light Tonal=BKG
THREAD-Color on Color=BTG
THREAD-Dark Tonal=N/A

256 DARK GREEN

INK-Light Tonal=EV
INK-Color on Color=DG
INK-Dark Tonal=N/A

THREAD-Light Tonal=BKG
THREAD-Color on Color=BTG
THREAD-Dark Tonal=N/A

285 FIELD GREEN

INK-Light Tonal=WIL
INK-Color on Color=PMS7763
INK-Dark Tonal=N/A

THREAD-Light Tonal=PGN
THREAD-Color on Color=MGN
THREAD-Dark Tonal=TYM

2009 CARGO OLIVE

INK-Light Tonal=N/A
INK-Color on Color=PMS7527
INK-Dark Tonal=BCH

THREAD-Light Tonal=CCH
THREAD-Color on Color=ST
THREAD-Dark Tonal=EA

798 PEBBLESTONE

INK-Light Tonal=N/A
INK-Color on Color=PMS2127
INK-Dark Tonal=WGD

THREAD-Light Tonal=N/A
THREAD-Color on Color=N/A
THREAD-Dark Tonal=DCM

9028 SILVER SPOTLIGHT

INK-Light Tonal=N/A
INK-Color on Color=OXG
INK-Dark Tonal=MD

THREAD-Light Tonal=N/A
THREAD-Color on Color=NIK
THREAD-Dark Tonal=DGF

930 HEATHER GREY

INK-Light Tonal=N/A
INK-Color on Color=OXG
INK-Dark Tonal=MD

THREAD-Light Tonal=N/A
THREAD-Color on Color=NIK
THREAD-Dark Tonal=DGF

939 ACTIVE GREY

INK-Light Tonal=N/A
INK-Color on Color=HNY
INK-Dark Tonal=CI

THREAD-Light Tonal=N/A
THREAD-Color on Color=N/A
THREAD-Dark Tonal=N/A

3012 BOLD HYTOP GOLD

INK-Light Tonal=N/A
INK-Color on Color=SGO
INK-Dark Tonal=GO

THREAD-Light Tonal=N/A
THREAD-Color on Color=PAR
THREAD-Dark Tonal=MYW

338 YELLOW CAB

INK-Light Tonal=N/A
INK-Color on Color=GO
INK-Dark Tonal=KA

THREAD-Light Tonal=N/A
THREAD-Color on Color=MYW
THREAD-Dark Tonal=KA

377 C. GOLD

INK-Light Tonal=N/A
INK-Color on Color=RN
INK-Dark Tonal=STG

THREAD-Light Tonal=N/A
THREAD-Color on Color=TN
THREAD-Dark Tonal=SW

373 VEGAS GOLD

INK-Light Tonal=N/A
INK-Color on Color=N/A
INK-Dark Tonal=OXG

THREAD-Light Tonal=N/A
THREAD-Color on Color=CSI
THREAD-Dark Tonal=NIK

940 SILVER GREY

INK-Light Tonal=OXG
INK-Color on Color=MD
INK-Dark Tonal=CH

THREAD-Light Tonal=NIK
THREAD-Color on Color=DGF
THREAD-Dark Tonal=CH

948 GUNSMOKE HEATHER

INK-Light Tonal=N/A
INK-Color on Color=OXG
INK-Dark Tonal=MD

THREAD-Light Tonal=N/A
THREAD-Color on Color=NIK
THREAD-Dark Tonal=DGF

950 OXFORD HEATHER

INK-Light Tonal=N/A
INK-Color on Color=OXG
INK-Dark Tonal=MD

THREAD-Light Tonal= N/A
THREAD-Color on Color= NIK
THREAD-Dark Tonal= DGF

955 HERITAGE GREY

INK-Light Tonal=N/A
INK-Color on Color=OR
INK-Dark Tonal=NO

THREAD-Light Tonal=N/A
THREAD-Color on Color=MND
THREAD-Dark Tonal=RU

465 ORANGE

INK-Light Tonal=SAF
INK-Color on Color=TO
INK-Dark Tonal=N/A

THREAD-Light Tonal=HAR
THREAD-Color on Color=TXT
THREAD-Dark Tonal=TB

475 TEXAS ORANGE

INK-Light Tonal=WGO
INK-Color on Color=PMS151
INK-Dark Tonal=N/A

THREAD-Light Tonal=MNG
THREAD-Color on Color=DO
THREAD-Dark Tonal=MND

4111 SPIRITED ORANGE

INK-Light Tonal=N/A
INK-Color on Color=MEM
INK-Dark Tonal=FUS

THREAD-Light Tonal=CUP
THREAD-Color on Color=CMB
THREAD-Dark Tonal=PK

5031 FEATHER PINK

INK-Light Tonal=N/A
INK-Color on Color=PER
INK-Dark Tonal=BK

THREAD-Light Tonal=NIK
THREAD-Color on Color=DG
THREAD-Dark Tonal=BK

956 TITANIUM

INK-Light Tonal=HGY
INK-Color on Color=MD
INK-Dark Tonal=CH

THREAD-Light Tonal=NIK
THREAD-Color on Color=DGF
THREAD-Dark Tonal=CH

972 GRAPHITE

INK-Light Tonal=MD
INK-Color on Color=CH
INK-Dark Tonal=BK

THREAD-Light Tonal=NIK
THREAD-Color on Color=CH
THREAD-Dark Tonal=BK

990 GRANITE HEATHER

INK-Light Tonal=HGY
INK-Color on Color=N/A
INK-Dark Tonal=BK

THREAD-Light Tonal=NIK
THREAD-Color on Color=DGF
THREAD-Dark Tonal=BK

9901 GRANITE

INK-Light Tonal=N/A
INK-Color on Color=FUS
INK-Dark Tonal=POS

THREAD-Light Tonal=CMB
THREAD-Color on Color=FUS
THREAD-Dark Tonal=CSB

5101 MOONLIGHT MAUVE

INK-Light Tonal=N/A
INK-Color on Color=FUS
INK-Dark Tonal=POS

THREAD-Light Tonal=CMB
THREAD-Color on Color=FUS
THREAD-Dark Tonal=CSB

5108 HEIRLOOM PINK

INK-Light Tonal=N/A
INK-Color on Color=SCR
INK-Dark Tonal=SRD

THREAD-Light Tonal=N/A
THREAD-Color on Color=RD
THREAD-Dark Tonal=MA

529 SCARLET

INK-Light Tonal=N/A
INK-Color on Color=CR
INK-Dark Tonal=ACA

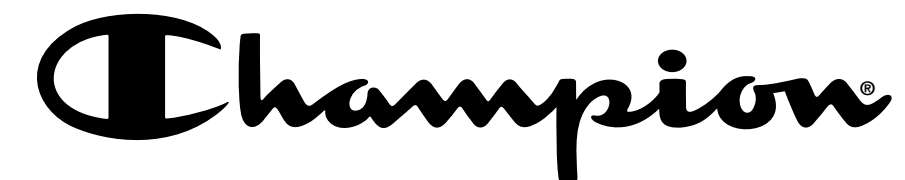
THREAD-Light Tonal=RD
THREAD-Color on Color=CR
THREAD-Dark Tonal=CA

536 CLASSIC RED

INK-Light Tonal=CH
INK-Color on Color=BK
INK-Dark Tonal=N/A

THREAD-Light Tonal=DGF
THREAD-Color on Color=BK
THREAD-Dark Tonal=N/A

999 BLACK



GRAPHIC SHOP
MEN'S COLLECTION

GRAPHIC SHOP
MEN'S COLLECTION



APC03802380
 X3 / FC2 / WH, PMS 484, PMS 872



APC03802374
 P2 / FC2 / BK, ASH



APC03802373
 P4 / FC2 / TBL, PMS 484, PMS 872, BK



APC03802387
 P5 / FC2 / WH, PMS 1625, PMS 185, PMS 285, MNY



APC03802388
 P2 / FC2 / ASH, MNY



APC03802391
 P1 / FC2 / MNY



APC03802384
 P1 / FCX / MNY



APC03802385
 X4 / FC2 / WH, PMS 285, PMS 185, PMS 1625



APC03802386
 P5 / FC2 / WH, PMS 1625, PMS 185, MNY, PMS 285



APC03802381 P1 / LC / BK
 APC03802382 P1 / BA4 / BK



APC03802403
 P1 / FC2 / MNY



APC03802406
 P1 / LL / MNY



APC03802391
 P1 / FC2 / MNY



APC03802405
 P1 / FC3 / MNY



APC03802389 P1 / LC / MNY
 APC03802390 P1 / BA3 / MNY



APC03802376
 P1 / LL / BK



APC03802372
 X5 / LL / TLB, WH, BK, PMS 872, PMS 484



APC03802404
 X2 / LL / PMS 185, WH

GRAPHIC SHOP
MEN'S COLLECTION

GRAPHIC SHOP
MEN'S COLLECTION



APC03626983
 P5 / FC2 / RD, BK, WH, SM, PMS 465



APC03688969
 P1 / FC2 / NY



APC03624795
 P3 / FC2 / RY, RD, PMS 465



APC03603012
 X4 / FC2 / BK, PMS 871, PMS 877, WH



APC03624542
 X3 / FC2 / CR, WH, TG



APC03739766
 P2 / FC2 / WH, RD



APC03617413
 X3 / FC2 / WH, GO, LR



APC03716754
 P1 / FC2 / NY



APC03741547
 X5 / FC2 / GR, ST, BK, EV, WH



APC03730908
 P3 / FC2 / PMS 871, PMS 877, BK



APC03727272
 X4 / FC2 / WH, CNY, GRS, BK



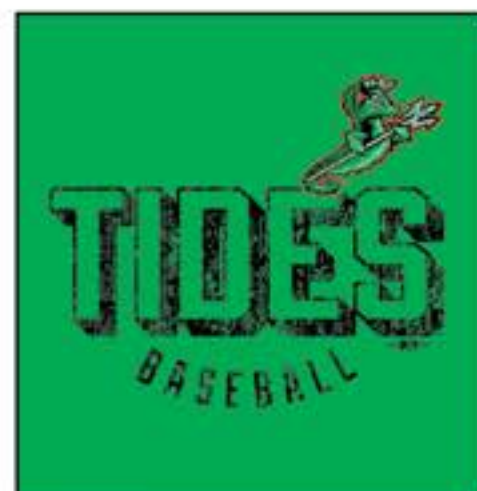
APC03712336
 X3 / FC2 / WH, PMS 388, PMS 647



APC03625944
 X3 / FC2 / WH, CIT, PMS 167



APC03739999
 X2 / FC2 / WH, CR



APC03737564
 X5 / FC1 / WH, BK, OR, CON, LMN



APC03763412
 X4 / FC2 / SCR, GO, PU, WH



APC03751854
 X4 / FC2 / WH, BK, SRD, SI



APC03730910
 X4 / FC2 / PMS 312, PMS 871, PMS 877, BK

GRAPHIC SHOP
WOMEN'S COLLECTION



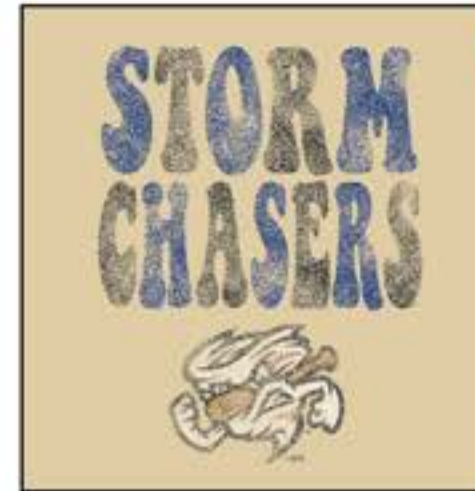
APC03802417
X3 / FC2 / BK, OXG, WH



APC03802416
P4 / FC2 / BK, SAN, RA, WH



APC03802415
P2 / FC2 / BK, TBL



APC03802425
P5 / FC2 / BK, CI, WH, TO, TBL



APC03802449 P2 / FC2 / PMS 185, MNY
APC03802451 DSP1 / DSP / MNY



APC03802435
P2 / FC2 / SG, CV



APC03802418
X3 / FC2 / WH, AQ, PMS 872



APC03802420
X2 / FC2 / WH, WAT



APC03802448
P5 / FC2 / PMS 185, PMS 1625, WH, PMS 285, MNY



APC03802436 X2 / LC / WH, PMS 484
APC03802437 X3 / BA / PMS 484, WH, PMS 872



APC03802453
X1 / FC2 / GY



APC03802458
P1 / FC2 / MNY



APC03802427
P1 / FC2 / BK



APC03802452
P1 / FC2 / MNY



APC03802434
X1 / FC2 / WH



APC03802455
X5 / FC2 / WH, PMS 285, PMS 185, PMS 1625, WIN
APC03802456 DSX1 / DSP / WH



APC03802413
X3 / FC2 / WH, PMS 484, PMS 872



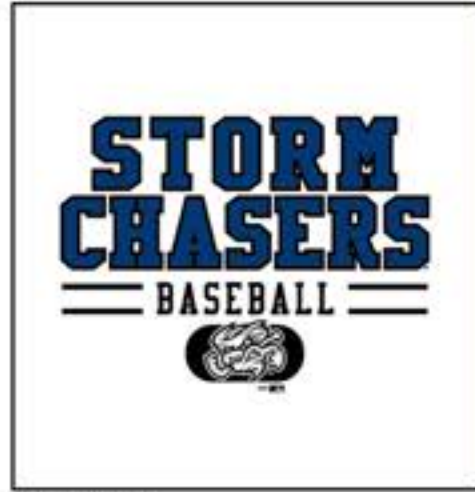
APC03802454
X4 / FC2 / PMS 185, WH, PMS 1625, PMS 285

GRAPHIC SHOP
YOUTH COLLECTION

GRAPHIC SHOP
YOUTH COLLECTION



APC03802459
X2 / FC2 / WH, PMS 872



APC03802461
P2 / FC2 / BK, TBL



APC03802460
X2 / FC2 / WH, BK



APC03745491
P5 / FC2 / PMS CG6, BK, RD, SA, SGO



APC03802449
X1 / FC2 / PMS 7499



APC03575586
X5 / FC2 / RD, WH, CIT, WIN, LB



APC03802462
X3 / FC2 / TBL, PMS 484, PMS 872, WH



APC03627066
P5 / FC2 / RD, BK, WH, PMS 465, PMS 666



APC03608069 X7 / FC2 / BK, WH, SCR, PMS 124,
PMS 138, PMS 253, PMS 356



APC03711454
X2 / FC2 / CV, ACA



APC03709026
X3 / FC2 / RB, RD, WH



APC03695424
P4 / FC2 / WH, RD, BK, HGY



APC03566292
P4 / FC2 / WH, NY, RY, WAT



APC03752529
X4 / FC2 / WH, RD, HGY, BK



APC03752038
X4 / FC2 / DRD, WH, MNY, WIN



APC03695394
X4 / FC2 / MNY, GO, CAN, WH



APC03794044
P1 / FC2 / BK



APC03730992
X5 / FC2 / WH, PMS 312, PMS 871, PMS 877, BK

Champion®

9700 Commerce Parkway Lenexa, KS 66219
www.gearforsports.com 888 800 2529 913 693 3996
All designs remain the property of GEAR FOR SPORTS®.
A HanesBrands Company

24FA_CPS_CATALOG_MILB



GEAR FOR SPORTS® is a fully Accredited Participating Company with the FLA. This non-profit group is dedicated to improving conditions in factories worldwide. We are committed to FLA labor standards throughout our entire supply chain.

© 2023 HANESBRANDS INC. ALL RIGHTS RESERVED