

Champion®

▶
▶
CHAMPION FALL 2024 COLLEGIATE



BACK IN BLACK
ATTACK

CHAMPION

THE EXPERIENCE



MEN'S COLLECTION

Powerblend	8
Core Tees & Shorts	10
Outerwear & Polo	20
Garment Dye	28
Reverse Weave	34
Triumph	40
	46

WOMEN'S COLLECTION

Powerblend	52
Core Tees	54
Soft Touch	64
Reverse Weave	74
Triumph	76
	80

YOUTH COLLECTION

COLOR GUIDE

86

94

CHAMPION

YOUR SCHOOL SPIRIT



Welcome to our 2024 **CHAMPION COLLEGIATE CATALOG** offering a winning combination of style and team pride. Our **2024 INLINE COLLECTION** features new trend-right silhouettes alongside our tried-and-true core basics. Our Champion styles are your canvas, where **IMAGINATION MEETS CUSTOMIZATION.**

Get ready to elevate your game day experience so you can **CHAMPION YOUR SCHOOL SPIRIT!**

MEET THE EMBERS



000 AEC03821934 E FC

Lia

JUNIOR

Bachelor of Science in Retailing
with a concentration in Fashion
Merchandising & Digital Innovations



999 APC03441988 X2 FC

Devon

JUNIOR

Bachelor of Science in Business
Administration with a double major in
Marketing and International Business
with a minor in Spanish and
Concentration in Sustainability.



7010 APC03814307 P3 MFC

Toni

SENIOR

Major in Fashion Merchandising and
Digital Innovations with a minor in
Event Management

The **CHAMPION EMBERS** is a pilot program that was started in 2022-23 to provide insights, product inspiration and product feedback directly **FROM STUDENTS ON CAMPUS.**

The name **EMBERS** is inspired by the **CHAMPION SPARK LAB** in the New York City office; Embers provide the first “fire” and “inspiration” for our trend and product development within the **CHAMPION LICENSED SPORTS APPAREL DIVISION.**

MEN'S COLLECTION

	XS	S	M	L	XL	2XL
CHEST (IN)	30-32	32-34	36-38	40-42	44-46	48-50
WAIST (IN)	26-28	28-30	32-34	36-38	40-42	44-46



CB1012
Packable
Jacket



CB1015
Full Zip
Lightweight Jacket



CT3009
Men's Micro Mesh
1/4 Zip



CT3022
Men's Micro Mesh
Sport Polo



CT3012
Men's Textured
Solid Polo

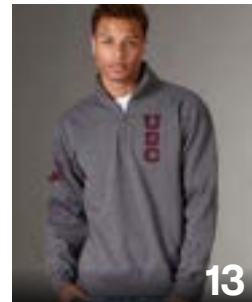
▶▶ POWERBLEND



CS1220
Powerblend®
Crew



CS2071
Powerblend®
Hood



CS2083
Powerblend®
1/4 Zip

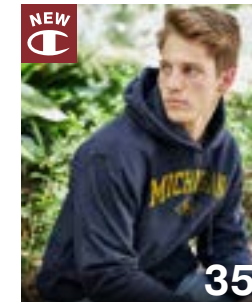


CS2072
Powerblend®
Full Zip



C82075
Powerblend®
7" Short

▶▶ GARMENT DYE



GD101C
Men's Garment Dyed
RW Hood



GD149C
Men's Garment Dyed
RW Crew

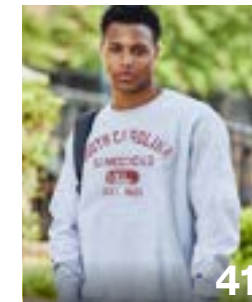


CD10C
Men's Garment Dyed
SS Tee



CD20C
Men's Garment Dyed
LS Tee

▶▶ REVERSE WEAVE



41 CS3050
Men's Reverse
Weave Crew

▶▶ CORE TEES & SHORTS



CP2071
Powerblend®
Banded Pant



CP2081
Powerblend® Open
Bottom Pant



CP2072
Powerblend®
Fleece Jogger Pant



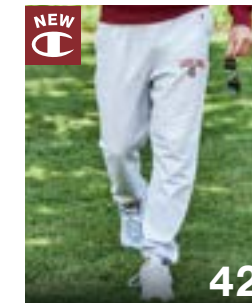
CT1000
Jersey Short
Sleeve Tee



CT1730
Jersey Long
Sleeve Tee



CS3051
Men's Reverse
Weave Hood



RW10C
Men's Reverse
Weave Sweatpant

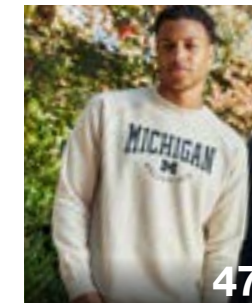


CS3358
Men's Reverse Weave
Yarn Dye Rib Crew



CS3044
Men's Reverse Weave
Full Zip

▶▶ TRIUMPH



CS0331
Men's Triumph Fleece
Raglan Crew

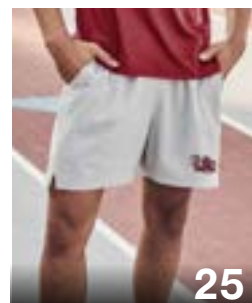
▶▶ OUTERWEAR & POLOS



C81255
Men's Classic
Mesh Short



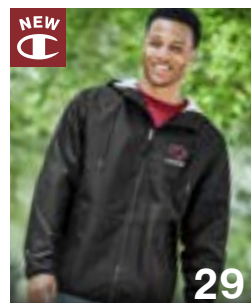
25 CT1028
Men's Athletic Short
Sleeve Tee



C81001
Men's Woven
5" Short



CB1074
Men's Explorer Full
Zip Jacket



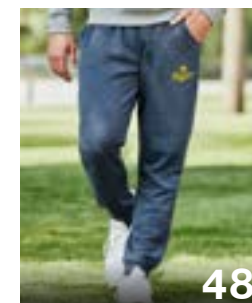
CB1075
Men's Heavyweight
Champion Jacket



CS0332
Men's Triumph Fleece
Raglan 1/2 Zip



CS0337
Men's Triumph
Fleece Hood



CP0333
Men's Triumph
Fleece Jogger



CT1060
Men's Ultimate
Triblend Tee



CP0225
Men's Tri-Blend
Long Sleeve Tee



588 AEC03823885 2SS3 FC

▶▶ CHAMPION FALL 2024 COLLEGIATE



MEN'S POWERBLEND



CHAMPION POWERBLEND® CREW

CS1220 | XS-3XL
 3XL AVAILABLE IN: 1818, 190, 256, 529, 539, 578, 930, 990, 999

- 50% Cotton / 50% Polyester powerblend fleece
- Classic fitting set-in sleeve silhouette
- Rib knit at neck, cuffs and waistband
- Authentic C Logo patch on left sleeve
- Art #: **999 APC03815926 X2 FC2**
990 APC03823069 SPFP2 FC2
000 APC03813500 P1 LL





CHAMPION FALL 2024 COLLEGIATE

CHAMPION POWERBLEND® HOOD

CS2071 | XS -3XL

3XL AVAILABLE IN: 1818, 190, 256, 529, 539, 578, 930, 999

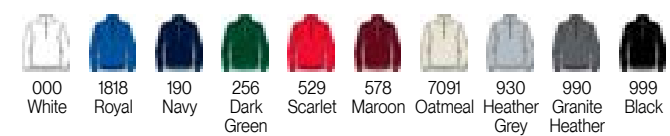
- 50% Cotton / 50% Polyester powerblend fleece
- Classic fitting set-in sleeve silhouette
- Double layer hood with drawcord
- Front pouch pocket
- Rib knit at cuffs and waistband
- Authentic C Logo patch on left sleeve
- Art #: **000 AEC03814373 2A9 FC AEC03814374 E SL**



CHAMPION POWERBLEND® 1/4 ZIP

CS2083 | XS - 2XL

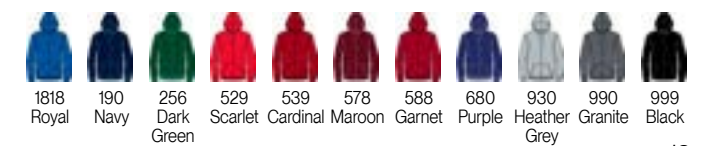
- 50% Cotton / 50% Polyester powerblend fleece
- Classic fitting set-in sleeve silhouette
- Covered zipper at center front
- Finished back neck seam
- Rib knit at cuffs and waistband
- Authentic C Logo patch on left sleeve
- Art #: **990 APC03815953 P2 VC APC03815954 P2 SR**



CHAMPION POWERBLEND® FULL ZIP

CS2072 | XS-2XL

- 50% Cotton / 50% Polyester powerblend fleece
- Classic fitting set-in sleeve silhouette
- Double layer hood with drawcord
- Covered Zipper at Center Front
- Front pouch pocket
- Rib knit at cuffs and waistband
- Authentic C Logo patch on left sleeve
- Art #: **999 AEC03815102 E LC 000 APC03814687 P2 FC2**





CHAMPION POWERBLEND® 7" SHORT

C82075 | XS - 2XL

- 50% Cotton / 50% Polyester powerblend fleece
- Comfortable encased elastic waistband with interior drawcord
- Hand pockets lined with lightweight jersey
- Modern 7" inseam with raw edge detail at hem
- Authentic C Logo patch at left hip
- Art #: **7202 APC03813500 P1 LL**



CHAMPION POWERBLEND® BANDED PANT

CP2071 | XS-2XL

- 50% Cotton / 50% Polyester powerblend fleece
- Comfortable, everyday fit
- Hand pockets lined with lightweight jersey
- Inside drawcord at waistband
- Covered elastic ankle
- Authentic C Logo patch at left hip
- Art #: **588 APC03815930 DSX2 DSP**



CHAMPION POWERBLEND® OPEN BOTTOM PANT

CP2081 | XS-2XL

- 50% Cotton / 50% Polyester powerblend fleece
- Comfortable, everyday fit
- Hand pockets lined with lightweight jersey
- Inside drawcord at waistband
- Authentic C Logo patch at left hip
- Art #: **999 APC03816464 X1 LLW**



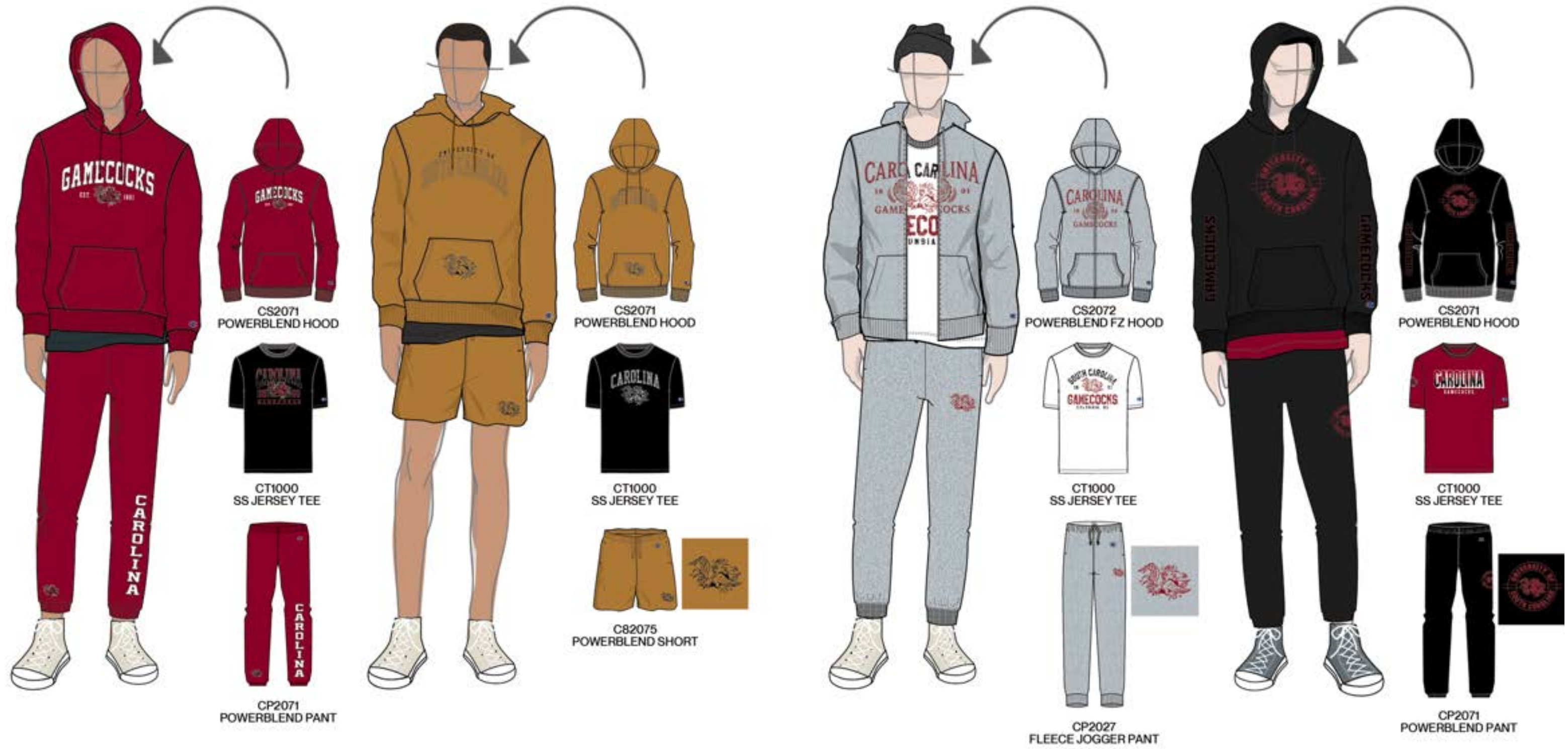
CHAMPION POWERBLEND® FLEECE JOGGER PANT

CP2072 | XS-2XL

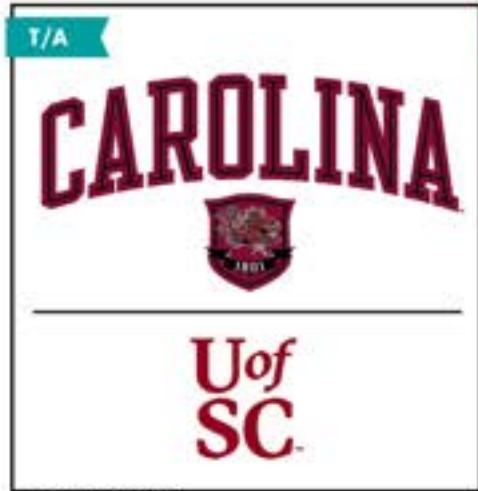
- 50% Cotton / 50% Polyester powerblend fleece
- 31" inseam with rib cuff at ankle
- Hand pockets lined with lightweight jersey
- Inside drawcord at waistband
- Authentic C Logo patch at left hip
- Art #: **999 APC03814793 X2 LL**



OUTFITTING
MEN'S POWERBLEND SETS



GRAPHIC SHOP
MEN'S POWERBLEND



AEC03814373
 2A9 / FC / RBW, RB, RB, BK, BK, DGF
 WH, RB, WH, BK, WH
 AEC03814374
 E / SL / RB



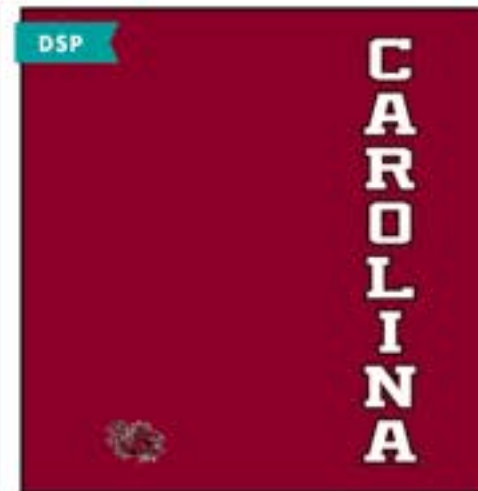
AEC03832873
 4AA99 / FC / WHT, BKT, WH, WH WH, BK



AEC03832864
 VT3 / VFC / A. BKSF, 1 WH, 2. PMS 202 CHENILLE
 AEC03824192
 VT1 / VSL / A. SUB-HIGH LOFT



APC03816461
 X1 / FC2 / PMS 202
 APC03819151
 DSX1 / DSP / PMS 202



APC03815930
 DSX2 / DSP / WH, BK



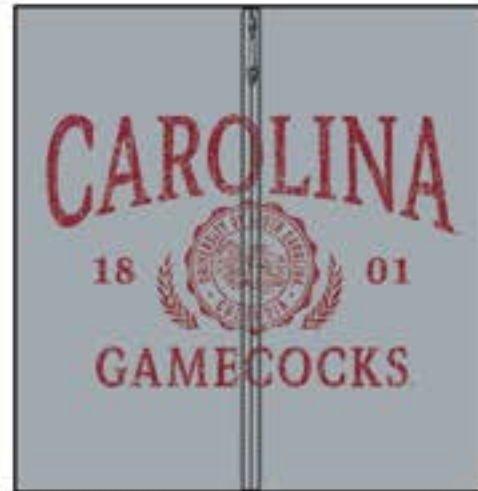
APC03831716
 P1 / LC / PMS 202
 APC03831713
 P2 / MBA / BK, PMS 202



APC03815489
 X2 / FC3 / BK, WH



APC03830935
 P1 / AKP / PMS 202



APC03814696
 P1 / FCX / PMS 202



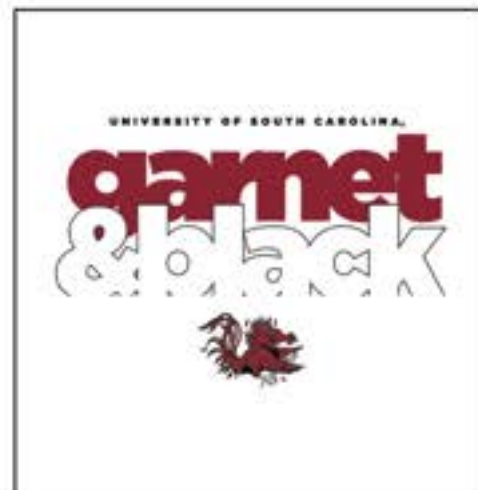
APC03815954
 P2 / SR / PMS 202, BK
 APC03815953
 P2 / VC / PMS 202, BK



APC03813492
 P1 / PP / BK
 APC03813496
 P1 / FC2 / BK



APC03813500
 P1 / LL / BK



APC03831497
 P2 / FC2 / PMS 202, BK



APC03831718
 X1 / VC / PMS 202



APC03830972
 X2 / FC2 / WH, BK
 APC03831008
 X2 / FC2 / WH, BK



APC03817169
 X3 / LL / WH, PMS 202, BK



APC03814793
 X2 / LL / WH, PMS 202



APC03816464
 X1 / LLW / PMS 202

CORE TEES & SHORTS

▶▶ CHAMPION FALL 2024 COLLEGIATE





JERSEY SHORT SLEEVE TEE

CT1000 | S-3XL
1134, 2009, 4111, 5108, 6107, and 7202 S-2XL only

- 100% cotton jersey
- 950 is 90% cotton / 10% polyester
- 990 is 50% cotton / 50% polyester
- Classic Fitting Silhouette with set in sleeves and rib collar
- Heat transfer label at back neck

• Art #: **588 APC03817170 X2 FC2 APC03817171 X2 SR**



JERSEY LONG SLEEVE TEE

CT1730 | S-3XL, 3XL AVAILABLE IN: 000, 1818, 190, 256, 529, 539, 578, 950, 990, 999

- 100% cotton jersey
- 950 is 90% cotton / 10% polyester
- 990 is 50% cotton / 50% polyester
- Classic Fitting Silhouette with set in sleeves
- Rib Collar and Cuffs
- Heat transfer label at back neck

• Art #: **999 APC03815909 X2 FC2 APC03815913 DSX2 DSP**





MEN'S CLASSIC MESH SHORT

C81255 | S-3XL, 3XL in 190, 939, 999

- 100% polyester mesh
- 8.5" inseam
- Quickcord waistband with inside Champion branding
- Side pockets and vents
- Art #: **588 APC03814698 / X2 / LL**
999 APC03813503 X2 FC2



MEN'S ATHLETIC SHORT SLEEVE TEE

CT1028 | S-3XL

- 100% polyester
- Self collar
- Art #: **588 APC03813942 X1 FC2**



MEN'S WOVEN 5" SHORT

C81001 | S-2XL

- 92% Polyester, 8% Elastane
- Elasticated Waistband
- Interior Drawcord
- Slanted Side Pockets
- Vented Hem
- Back Yoke
- 5" Inseam
- Art #: **9022 APC03814700 P2 LL**



GRAPHIC SHOP
MEN'S CORE TEES & SHORTS



APC03815940
 X3 / FC2 / BK, WH, MD



APC03817166
 P1 / FC2 / BK



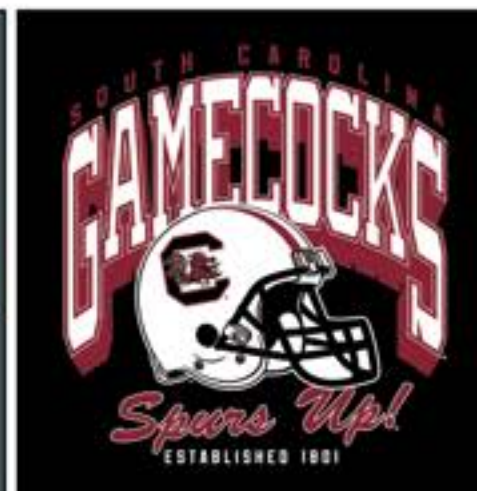
APC03814687
 P2 / FC2 / BK, PMS 202



APC03814698
 X2 / LL / BK, WH



APC03813943
 X3 / FC2 / WH, PMS 202, BK



APC03813944
 X2 / FC2 / PMS 202, WH



APC03815942
 ST3 / FC2 / STMD, STOX, STWH



APC03815926
 X2 / FC2 / WH, PMS 202



APC03815925
 X3 / FC2 / PMS 202, BK, WH



APC03813946
 X2 / FC2 / WH, BK



APC03817173
 X2 / LC / WH, BK
 APC03817174
 X2 / BA3 / WH, BK, PWH



APC03831235
 X2 / FC2 / WH, BK
 APC03831239
 DSX2 / DSP / WH, BK



APC03815960
 X2 / FC2 / CMP, BZ



APC03813503
 X2 / FC2 / WH, PMS 202



APC03817170
 X2 / FC2 / WH, BK



APC03814315
 X2 / LC / WH, BK
 APC03814317
 X3 / BA3 / WH, SI, BK



APC03815909
 X2 / FC2 / WH, PMS 202
 APC03815913
 DSX2 / DSP / WH, PMS 202



APC03816444
 P2 / FC2 / PMS 202, BK
 APC03816448
 DSP2 / DSP / PMS 202, BK



OUTERWEAR & POLOS



CHAMPION MEN'S EXPLORER FULL ZIP JACKET

CB1074 | XS - 2XL

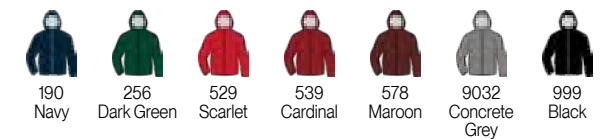
- 75% Recycled Polyester, 25% Polyester Micro Fleece Body
- 100% Polyester Woven Overlays
- Zippered Chest Pocket
- Hand Pockets
- Binding at Cuff and Waistband
- CF Zipper with Ticked Cord puller
- Art #: **9022 AEC03815171 E LC**



MEN'S HEAVYWEIGHT CHAMPION JACKET

CB1075 | XS -3XL, 3XL available in 190, 9032, and 999

- 100% Textured Polyester Woven Outer shell
- 61% Polyester, 27% Cotton, 12% Rayon Fleece Liner
- 3 Piece Hood
- Poly Drawcord with Metal Tip
- Binding at Cuff and Waistband
- CF Zipper with Pull tab
- Kanga Front Pocket
- Raglan Sleeves
- Interior Embroidery Zipper
- Art #: **999 AEC03815102 E LC**





PACKABLE JACKET

CB1012 | XS-3XL, 3XL available in 190, 972, 999

- 100% polyester micro poplin fabric with water resistant coating
- Open bottom with shock cords
- Scuba collar with hood
- Can be packed into front pocket
- Elasticated cuff to block wind
- Specialty hang tag calls out packing capabilities
- Art #: **190 APC03771654 X1 LC APC03814309 DSX1 DSP**



FULL ZIP LIGHTWEIGHT JACKET

CB1015 | XS-3XL, 3XL available in 190, 972, 999

- 100% polyester micro poplin fabric with water resistant coating
- Open bottom with shock cords
- Scuba collar with hood including shock cords
- Lower front on-seam pockets
- Elasticated cuff to block wind
- Art #: **000 APC03815968 P2 LC APC03815972 P2 BA4**



MEN'S MICRO MESH 1/4 ZIP

CT3009 | S-2XL

- 93% polyester, 7% spandex heathered micro mesh
- Stand collar with exposed zipper, featuring self-fabric stop at bottom and mini zipper guards at top
- Rolled forward side seams for a more active fit
- Straight body fit with side vents for added movement
- Art #: **190 AEC03815107 E LC**



MEN'S MICRO MESH SPORT POLO

CT3022 | S-2XL

- 93% polyester, 7% spandex heathered micro mesh
- Self-fabric collar and three button placket
- Standard finish sleeve and hem
- Straight body fit with side vents for added movement
- Art #: **9051 AEC03815106 E LC**



MEN'S TEXTURED SOLID POLO

CT3012 | S-3XL
3XL available in 000,190, 939 and 999

- 100% polyester textured stripe jacquard
- Rib knit collar
- 3 button placket
- Side vents
- Art #: **000 AEC03831459 E LC**



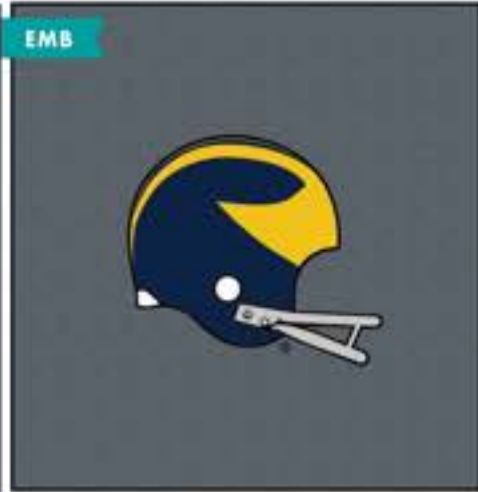
GRAPHIC SHOP
MEN'S OUTERWEAR & POLOS



AEC03814375
 E / LC / PAR, PAR, MNY



AEC03815107
 E / LC / MNY, MNY



AEC03815106
 E / LC / PAR, WH, TG, MNY



AEC03831459
 E / LC / MNY, PAR, MNY, MNY



AEC03831458
 E / LC / PAR, WH, PAR, PAR, WH, PAR



AEC02606295
 E / LC / MNY, PAR, MNY, MNY



AEC03815171
 E / LC / PAR, MNY, MNY



AEC03815102
 E / LC / RB, WH, BK, WH, WH



AEC03832740
 E / LC / PAR, WH



AEC03831460
 E / LC / WH, PAR, WH



AEC03831463
 E / LC / MNY, MNY



APC03831835
 X1 / LC / PMS 7406



AEC03832741
 E / LC / PAR, WH



AEC03833980
 E / LC / PAR, WH, PAR



AEC03831457
 E / LC / PAR, PAR, PAR, MNY



APC03771654
 X1 / LC / PMS 7406
 APC03814309
 DSX1 / DSP / PMS 7406



APC03815968
 P2 / LC / MNY, PMS 7406
 APC03815972
 P2 / BA4 / MNY, PMS 7406



APC03832341
 X1 / LC / PMS 7406



▶▶ CHAMPION FALL 2024 COLLEGIATE

GARMENT DYE

CHAMPION MEN'S GARMENT DYED RW HOOD

GD101C | S - 2XL

- 91% Cotton, 9% Polyester Reverse Weave fleece with Garment dye for soft hand and washed look
- 2-Piece Self-lined hood
- Knotted Drawcord
- Kanga Pocket
- Rib at Side Panels, Cuff and Waistband
- Relaxed fit
- Art #: **190 AEC03814423 4A9 FC**





CHAMPION MEN'S GARMENT DYED RW CREW

GD149C | S - 2XL

- 91% Cotton, 9% Polyester Reverse Weave fleece with Garment dye for soft hand and washed look
- Rib at Collar, Side Panels, Cuff and Waistband
- Relaxed fit
- Art #: **2086 AEC03820007 2A9 FC APC03820539 P1 FC2**



CHAMPION MEN'S GARMENT DYED SS TEE

CD10C | S - 2XL

- 100% Cotton Jersey with Garment dye for soft hand and washed look
- Rib at Collar
- Relaxed fit
- Art #: **1103 APC03816515 P1 FC2**



CHAMPION MEN'S GARMENT DYED LS TEE

CD20C | S - 2XL

- 100% Cotton Jersey with Garment dye for soft hand and washed look
- Rib at Collar and Cuff
- Relaxed fit
- Art #: **9032 APC03816485 P1 FC2 APC03816487 P1 US**



GRAPHIC SHOP
MEN'S GARMENT DYE

GRAPHIC SHOP
MEN'S GARMENT DYE



APC03820539
 P1 / FC2 / SMK
 AEC03820007
 2A9 / FC / NYW, MNY, MNY, MNY



AEC03814423
 4A9 / FC / YWW, PAR, PAR, PAR, PAR



AEC03836788
 4A8 / FC / NYW, MNY, MNY, MNY



APC03831740
 P1 / FC2 / MNY



APC03816515
 P1 / FC2 / MNY



APC03830297
 X2 / FC2 / WH, PMS 7406



AEC03814490
 3DE / FC / MNY, MNY, MNY



APC03813949
 X1 / FC2 / PMS 7406



APC03831246
 X1 / FC2 / PMS 7406



APC03816510
 P1 / FC2 / MNY



APC03830302
 X1 / FC2 / PMS 7406



APC03831249
 X1 / FC2 / PMS 7406



APC03831910
 X2 / FC2 / PMS 7406, WH



APC03831908
 WP2 / FC2 / PMS 7406, MNY



APC03831725
 P1 / FC3 / MNY



APC03816485
 P1 / FC2 / MNY
 APC03816487
 P1 / US / MNY



APC03830313
 P1 / BA3 / MNY
 APC03830303
 P1 / LC / MNY



APC03831283
 X2 / LC / MNY, PMS 7406
 APC03831285
 X2 / BA3 / MNY, PMS 7406



▶▶ CHAMPION FALL 2024 COLLEGIATE



MEN'S REVERSE WEAVE



MEN'S REVERSE WEAVE CREW

CS3050 | XS - 3XL, XS & 3XL AVAILABLE IN 190, 940, 950
3XL AVAILABLE IN 1616

- 80% cotton / 20% polyester heavyweight fleece
- Fabric cut on the cross-grain to resist vertical shrinkage
- Signature rib side panels for mobility
- Stretch rib at collar, cuffs, and waistband
- Art #: **940 APC03814311 P1 FC2**



MEN'S REVERSE WEAVE HOOD

CS3051 | XS-3XL
 3XL AVAILABLE IN: 190, 940, 950. XS AVAILABLE IN 940

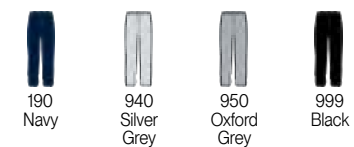
- 80% cotton / 20% polyester heavyweight fleece
- Fabric cut on the cross-grain to resist vertical shrinkage
- Signature rib side panels for mobility
- Two-ply hood with cotton draw cords
- Stretch rib at cuffs and waistband
- Pouch pocket
- Art #: **588 APC03814694 X3 FC2**



CHAMPION MEN'S REVERSE WEAVE SWEATPANT

RW10C | S - 2XL

- 80% Cotton, 20% Polyester Reverse Weave Fleece
- Elasticated Waistband
- Interior Drawcord, knotted
- Side seam pockets
- Banded bottom
- Relaxed fit
- Art #: **999 AEC03440764 E LL**



MEN'S REVERSE WEAVE YARN DYE RIB CREW

CS3358 | XS-2XL

- 80% cotton / 20% polyester heavyweight fleece
- Fabric cut on the cross-grain to resist vertical shrinkage
- Signature rib side panels for mobility
- Throwback striped rib at collar, cuffs, and waistband
- Body color is always silver grey, color name represents stripes in trim
- Art #: **999 APC03817177 P3 FC2**



BACK GRAPHIC



MEN'S REVERSE WEAVE FULL ZIP HOOD

CS3044 | XS-2XL

- 80% cotton / 20% polyester heavyweight fleece
- Fabric cut on the cross-grain to resist vertical shrinkage
- Traditional Reverse Weave styling with rib side panels for movement
- Metal zipper at center front
- Pouch pocket on lower body
- Classic Reverse Weave fleece fit
- Art #: **940 APC03814453 P1 LC APC03814455 P1 BA 999 APC03813503 X2 FC2**



MEN'S REVERSE WEAVE



AEC03814065
4SS2 / FC / BK, BK, BK, MA, BK, BKT, CAT
AEC01173306
E / SL / MA, WH, BK, WH



AEC03854765
2AAB / FC / CRT, BKR, MA, MA, MA, BK,
BK, WH, MA, WH, BK, WH
AEC03815164
E / CUR / RB



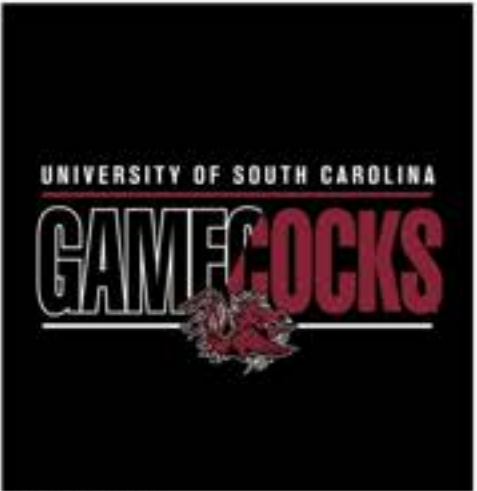
APC03831726
P3 / FC2 / BK, PMS 202, OXG



APC03831137
P3 / FC2 / BK, PMS 202, WH



APC03832337
P3 / FC2 / WH, PMS 202, BK



APC03834017
X2 / FC2 / WH, PMS 202



APC03817177
P3 / FC2 / WH, PMS 202, BK



APC03831272
P1 / FC2 / PMS 202



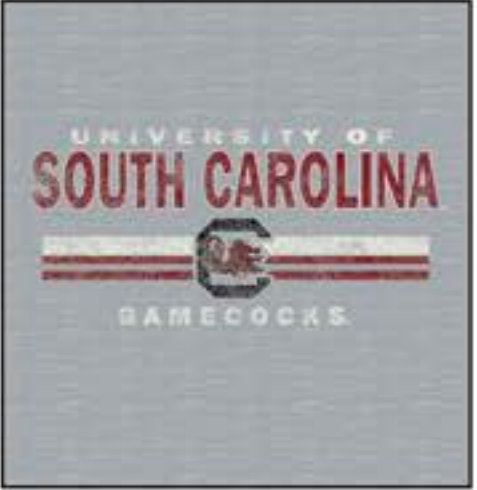
APC03833381
X3 / FC2 / WH, PMS 202, BK



APC03814694
X3 / FC2 / BK, WH, PWH



APC03832349
P3 / FC2 / WH, PMS 202, BK



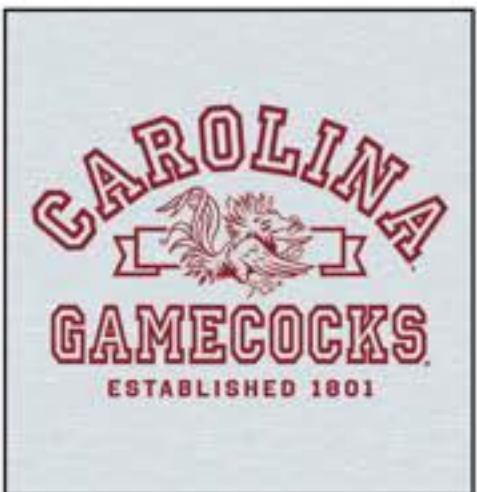
APC03831836
WP3 / FC3 / TMA, CV, BK



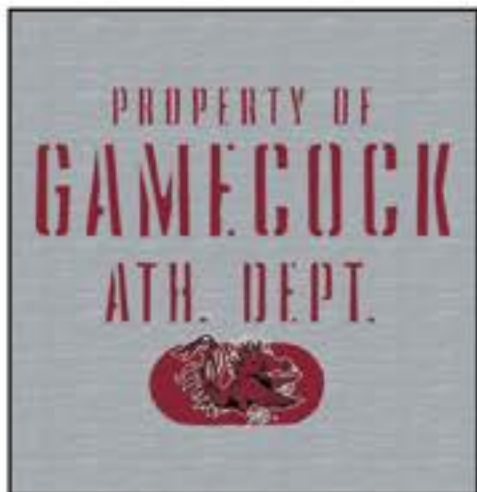
APC03814311
P1 / FC2 / TMA



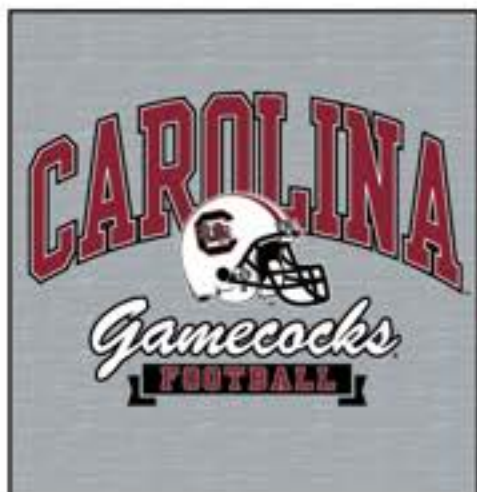
APC03831278
X3 / FC2 / WH, BK, OXG



APC03831274
P1 / FC2 / PMS 202



APC03831138
P3 / FC2 / BK, PMS 202, WH



APC03833963
X3 / FC2 / BK, PMS 202, WH



APC03814453
P1 / LC / PMS 202
APC03814455
P1 / BA / PMS 202



MEN'S TRIUMPH



CHAMPION MEN'S TRIUMPH FLEECE RAGLAN CREW

CS0331 | XS-2XL

- Super soft 47% polyester, 39% cotton, 14% rayon triblend fleece
- Classic raglan silhouette with comfortable all-day fit
- 2x2 rib at collar, cuffs and bottom band
- Art #: **798 APC03814668 P1 FC3**



CHAMPION MEN'S TRIUMPH FLEECE RAGLAN 1/2 ZIP

CS0332 | XS-2XL

- Super soft 47% polyester, 39% cotton, 14% rayon triblend fleece
- Classic raglan silhouette with stand collar
- Color matched reverse coil zipper at center front
- 2x2 rib cuffs and bottom band
- Art #: **190 AEC03816441 E LC**





MEN'S TRIUMPH FLEECE HOOD

CS0337 | XS-2XL

- 47% polyester, 39% cotton, 14% rayon fleece
- 2x2 rib at cuffs and waistband
- Raglan sleeve and classic fleece body fit
- Kanga pocket on front body
- Art #: **955 AEC03815104 E FC**



MEN'S TRIUMPH FLEECE JOGGER

CP0333 | XS-2XL

- 47% polyester, 39% cotton, 14% rayon fleece
- 2x2 rib at cuffs and waistband
- Classic fitting jogger with drawcord at waist
- Hand pockets with jersey pocket bags
- Art #: **190 AEC03816442 E LL**



BACK GRAPHIC



MEN'S ULTIMATE TRIBLEND TEE

CT1060 | S-2XL

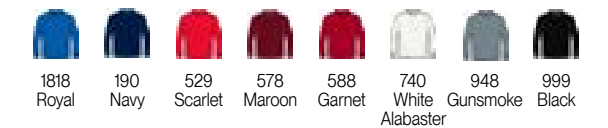
- 50% polyester / 37% cotton / 13% rayon jersey
- 1x1 rib at collar
- Set in short sleeve with slightly shorter, more modern fit
- Ladder stitching at sleeve hems and bottom opening
- Art #: **740 APC03813518 P1 FC2**



MEN'S TRI-BLEND LONG SLEEVE TEE

CT0225 | S-2XL

- 50% polyester / 37% cotton / 13% rayon jersey
- 1x1 rib at collar and cuffs
- Set in long sleeve and straight body
- Ladder stitching at bottom opening
- Art #: **948 APC03814796 P1 LC APC03814797 P1 BA**



GRAPHIC SHOP
MEN'S TRIUMPH



AEC03815104
 E / FC / MNY, PAR, MNY, MNY



AEC03816441
 E / LC / PAR, PAR



AEC03816442
 E / LL / PAR, PAR



APC03813518
 P1 / FC2 / NY



APC03831275
 X2 / FC2 / WH, PMS 7406



APC03831495
 P2 / FC2 / SMK, NY



APC03813509
 X1 / FC2 / PMS 7406



APC03832333
 X2 / FC3 / WH, PMS 7406



APC03834013
 X2 / FC2 / WIN, PMS 7406



APC03741286
 P2 / FC2 / MNY, PMS 7406



APC03831297
 X1 / FC3 / PMS 7406



APC03831131
 P3 / FC2 / PMS 7406, NY, WH



APC03814668
 P1 / FC3 / MNY



APC03814448
 X1 / FC2 / PMS 7406



APC03814795
 P1 / FC2 / NY



APC03831242
 X2 / LC / PMS 7406, WH
 APC03831243
 X2 / BA3 / PMS 7406, WH



APC03814796
 P1 / LC / NY
 APC03814797
 P1 / BA / NY



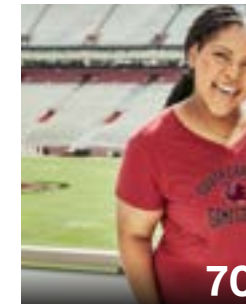
APC03830300
 X2 / JLC / WH, PMS 7406

WOMEN'S COLLECTION

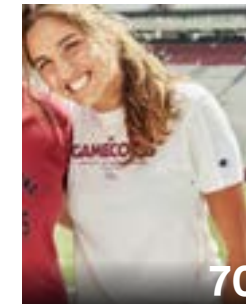
	XS	S	M	L	XL	2XL
CHEST (in)	30 - 31½	33 - 34½	35 - 36½	38 - 39½	41 - 42½	44
WAIST (in)	22½ - 24	25½ - 27	27½ - 29	30½ - 32	33½ - 35	36½
HIP (in)	32½ - 34	35½ - 37	37½ - 39	40½ - 42	43½ - 45	46½



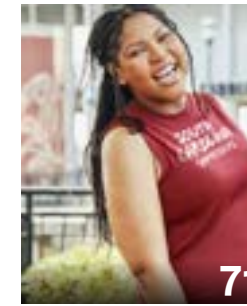
C6043
Women's Core
Oversized Tee



C6040
Women's Core
V Neck Tee



C6039
Women's Core
Short Sleeve Tee



C6042
Women's Core
Muscle Tank

▶▶ POWERBLEND



S760
Powerblend®
Women's Hood



S650
Powerblend®
Women's Crew



P950
Powerblend®
Women's Pant



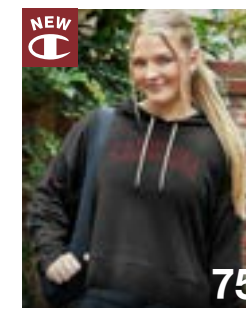
S856
Powerblend®
Women's Full Zip



C6041
Women's Core
Long Sleeve Tee



C4002
Women's Sueded
Touch Crew



C4003
Women's Sueded
Touch Hood



C3007
Women's Reverse Weave
Cropped Crew

▶▶ SUEDED SOFT TOUCH

▶▶ REVERSE WEAVE

▶▶ CORE TEES

▶▶ TRIUMPH



P940
Powerblend®
Women's Short



S456
Powerblend® Open
Women's 1/4 Zip



6055
Women's Core
Baby Tee



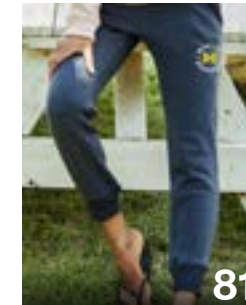
C6054
Women's Crop
Scoop Cami



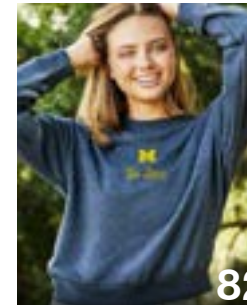
C3002
Women's Reverse Weave
Fleece Hood



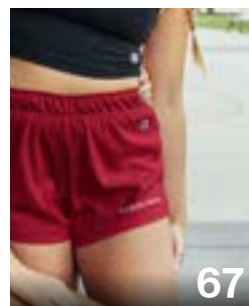
C6204
Champion Triumph
Women's Fleece Hood



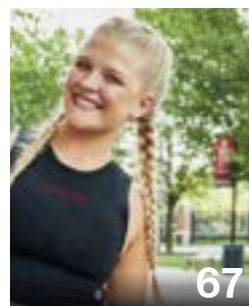
C6203
Women's Triumph
Fleece Pants



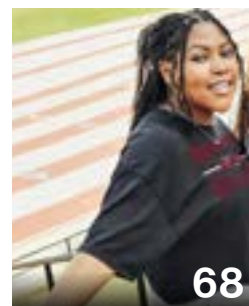
C6200
Women's Triumph
Long Sleeve Fleece Crew



C7791
Women's
Mesh Short



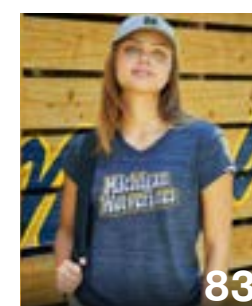
C6009
Women's Crop
Tank Top



C6003
Women's Boyfriend
Crop Tee



C6024
Women's Boyfriend Crop
Long Sleeve Tee



C6016
Women's Tri-Blend
V-Neck Tee





▶▶ CHAMPION FALL 2024 COLLEGIATE

WOMEN'S POWERBLEND



CHAMPION POWERBLEND® WOMEN'S HOOD

S760 | XS-2XL

- 50% cotton / 50% polyester
- Rib cuffs & waistband
- Relaxed fit
- Modern length
- Jersey lined hood
- Knotted cotton drawcord
- Kanga pocket

• Art #: **5108 APC03814932 X3 LC APC03814935 X3 BA**



CHAMPION POWERBLEND® WOMEN'S CREW

S650 | XS-2XL

- 50% cotton / 50% polyester
- Rib collar, cuffs, waistband
- Relaxed fit
- Modern length
- Art #: **000 AEC03813892 E FC**



CHAMPION POWERBLEND® WOMEN'S PANT

P950 | XS-2XL

- 50% cotton / 50% polyester
- Elasticated Waistband and cuff
- Relaxed fit
- Side seam hand pockets
- Interior knotted drawcord
- Art #: **000 AEC03814499 E LL**





CHAMPION POWERBLEND® WOMEN'S FULL ZIP

- S856 | XS-2XL
- 50% cotton / 50% polyester
 - Rib cuffs & waistband
 - Relaxed fit
 - Modern length
 - Kissing welt placket
 - Jersey lined hood
 - Knotted Cotton drawcord
 - Kanga pocket
- Art #: **999 AEC03814376 E LC**



CHAMPION POWERBLEND® WOMEN'S SHORT

- P940 | XS-2XL
- 50% cotton / 50% polyester
 - Elasticated Waistband
 - Relaxed fit
 - Side seam hand pockets
 - Knotted drawcord
 - 3" Inseam
- Art #: **999 APC03816443 P1 LL**



CHAMPION POWERBLEND® WOMEN'S ¼ ZIP

- S456 | XS - 2XL
- 50% cotton / 50% polyester
 - Rib Cuffs & Waistband
 - Relaxed fit
 - Modern Length
 - Kissing Welt Placket
 - Mock Collar
- Art #: **000 AEC03816494 E LC**
930 APC03816443 P1 LL



GRAPHIC SHOP
WOMEN'S POWERBLEND



AEC03814091
 3DE / FC / BK, BK, BK



AEC03832937
 E / FC / RB, BK, DGF



AEC03813892
 E / FC / DS



APC03830295
 SPFP3 / FC2 / SPWH, ACA, TMA



APC03815933
 SPFP4 / FC2 / BK, WH, SPWH, PMS 202



APC03814319
 X1 / FC2 / TMA



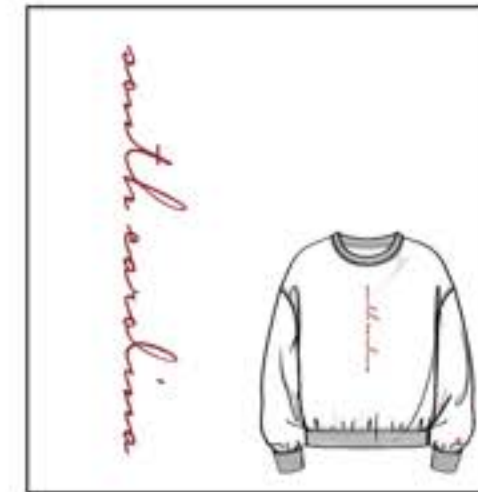
AEC03816494
 E / LC / RB, WH, BK, WH, RB, BK



AEC03832739
 E / LC / WH, WH



AEC03814376
 E / LC / RB, WH, BK, RB



APC03831470
 P1 / FC2 / PMS 202



APC03830293
 P3 / FC2 / ACA, TMA, BK



APC03816435
 X2 / RL / PMS 202, WH
 APC03816437
 X2 / LL / PMS 202, WH



AEC03821934
 E / FC / RB, BK, RB
 AEC03821935
 E / CUR / RB



APC03830292
 P4 / FC2 / PFLV, PFS, PFLY, PFLG



APC03814320
 P1 / FC3 / PBK



APC03814932
 X3 / LC / WH, PMS 202, RA
 APC03814935
 X3 / BA3 / WH, RA, PMS 202

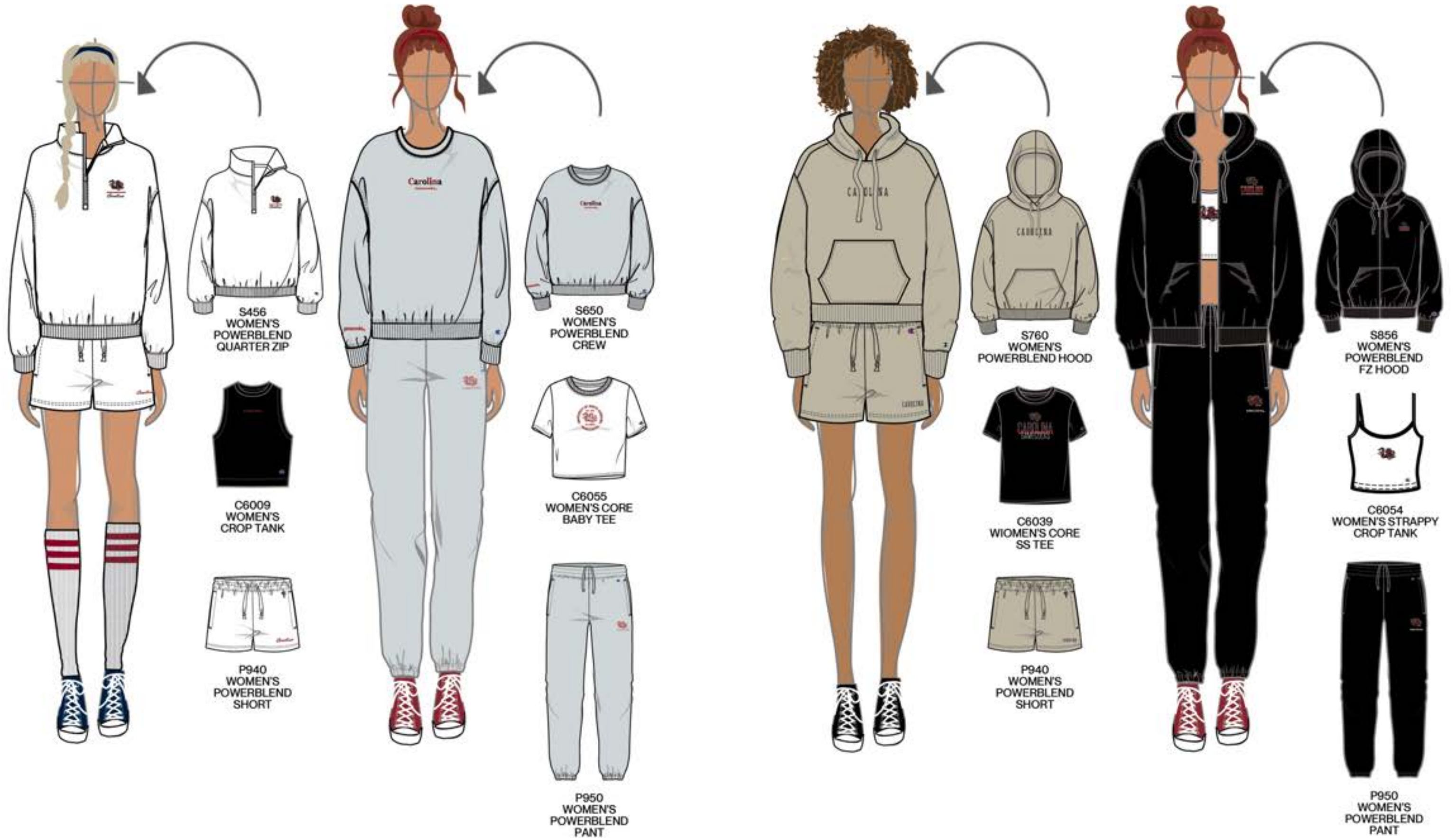


APC03816443
 P1 / LL / TMA



APC03814321
 P1 / LL / PBK

OUTFITTING
WOMEN'S POWERBLEND SETS





WOMEN'S CORE TEES

▶▶ CHAMPION FALL 2024 COLLEGIATE



CHAMPION WOMEN'S CORE BABY TEE

C6055 | XS - 2XL

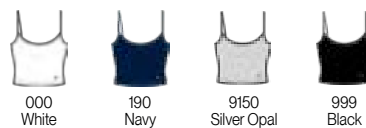
- 60% cotton / 40% polyester Jersey
- Set in Rib Collar
- Crew Neckline
- Closer-to-body fit
- 22" FBL
- Art #: **999 APC03813506 X1 FC3**



WOMEN'S CROP SCOOP CAMI

C6054 | XS-2XL

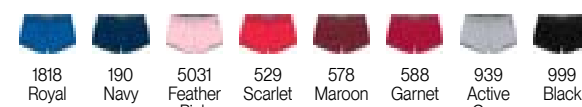
- 78% polyester, 22% elastane soft touch jersey
- Bound Armhole and Neckline
- Interior shelf bra
- Art #: **999 APC03441988 X2 FC APC03346676 X2 LL**



WOMEN'S MESH SHORT

C7791 | XS-2XL

- 100% polyester mesh shell and tricot lining
- Self-fabric and logo elastic waistband
- Standard hem finish with tiny vent
- 3" inseam
- Art #: **588 APC03813505 X1 LL**



WOMEN'S CROP TANK TOP

C6009 | XS-2XL

- 90% cotton / 10% spandex cottony, comfortable jersey
- Crew neck with narrow shoulder for modern appeal
- Cropped with next to body fit – Perfect as a layering piece or on its own
- Art #: **999 APC03813507 X1 FC3**





WOMEN'S BOYFRIEND CROP TEE

C6003 | XS-2XL

- 100% cotton jersey
- 950 is 90% cotton / 10% polyester
- Set-in neck rib
- Crop length with oversized "boyfriend" fit
- Art #: **999 APC03813516 X2 FC2**



WOMEN'S BOYFRIEND CROP LONG SLEEVE TEE

C6024 | XS-2XL

- 100% cotton jersey
- 950 is 90% cotton / 10% polyester
- Set-in neck rib
- Crop length with oversized "boyfriend" fit
- Art #: **000 APC03814445 P1 FC2 APC03816204 P1 VS**



CHAMPION WOMEN'S CORE OVERSIZED TEE

C6043 | S/M, L/XL

- 60% cotton / 40% polyester jersey
- Set in rib collar
- Crew neckline
- Dropped shoulder
- Oversized fit (2 sizes fit all)
- 29" body length (S/M)
- Art #: **7010 APC03814307 P3 MFC**





CHAMPION WOMEN'S CORE V NECK TEE

C6040 | XS-2XL

- 60% cotton / 40% polyester jersey
- Set in rib collar
- V neckline
- 25" body length
- Relaxed fit
- Art #: **588 APC03815962 X2 FC1**



CHAMPION WOMEN'S CORE SHORT SLEEVE TEE

C6039 | XS-2XL

- 60% cotton / 40% polyester jersey
- Set in rib collar
- Crew neckline
- 25" body length
- Relaxed fit
- Art #: **000 APC03813511 P1 FC3 930 APC03816443 P1 LL**



CHAMPION WOMEN'S CORE MUSCLE TANK

C6042 | XS-2XL

- 60% cotton / 40% polyester jersey
- Set in rib collar
- Rib detail at slight dropped armhole
- Crew neckline
- 24" body length
- Relaxed fit
- Art #: **588 APC03816447 X1 FC2**



CHAMPION WOMEN'S CORE LONG SLEEVE TEE

C6041 | XS-2XL

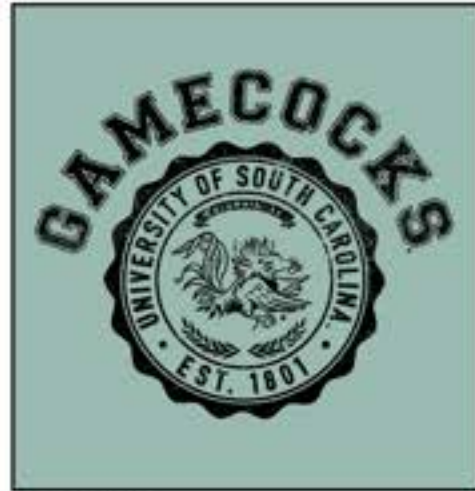
- 60% cotton / 40% polyester jersey
- Set in rib collar
- Rib cuff
- Crew neckline
- 25" body length
- Relaxed fit
- Art #: **999 APC03815079 X2 FC2 APC03823779 X2 VS**



GRAPHIC SHOP
CORE TEES



APC03830830
X1 / FC2 / WH



APC03815310
P1 / FC2 / BK



APC03817167
X2 / FC1 / WH, PMS 202



APC03831472
P1 / FC2 / PMS 202



APC03814444
P1 / FC2 / PMS 202



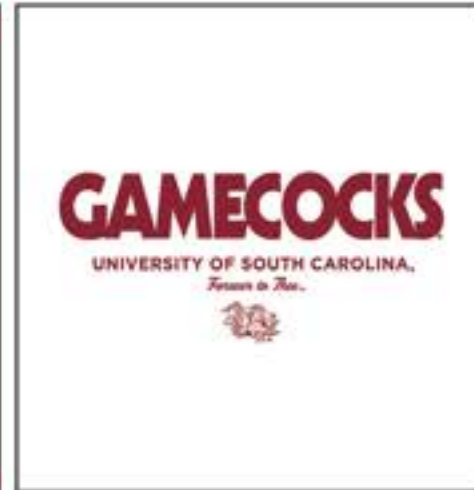
APC03830296
X1 / FC2 / WH



APC03814307
P3 / MFC / BK, TMA, WH



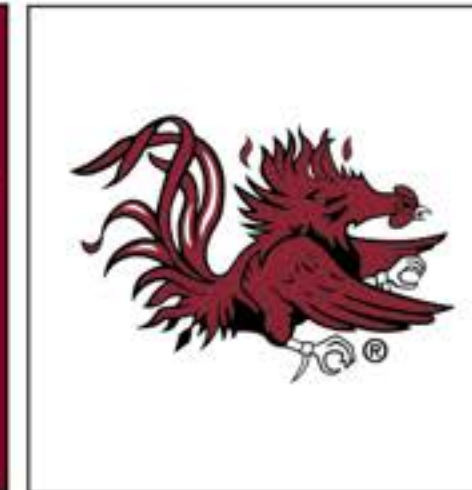
APC03816447
X1 / FC2 / WH



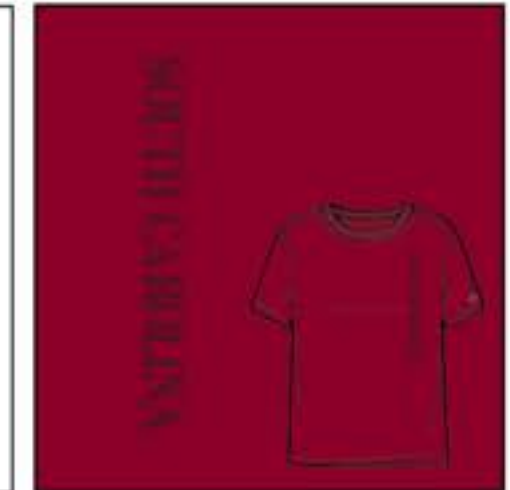
APC03813511
P1 / FC3 / PMS 202



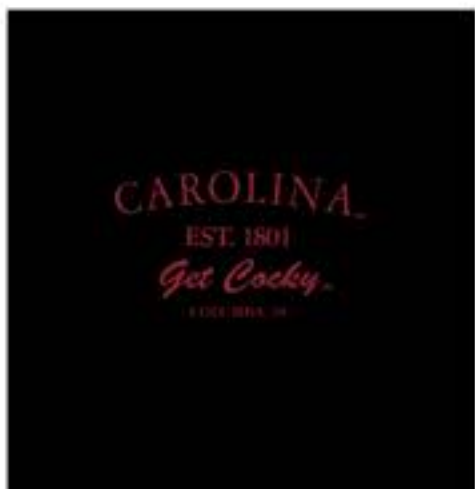
APC03815962
X2 / FC1 / WH, BK



APC03815078
P2 / FC1 / PMS 202, BK



APC03831481
P1 / VLC / DMA



APC03813506
X1 / FC3 / PMS 202



APC03813516
X2 / FC2 / WH, PMS 202



APC03813507
X1 / FC3 / PMS 202



APC03815079
X2 / FC2 / WH, PMS 202
APC03823779
X2 / VS / WH, PMS 202



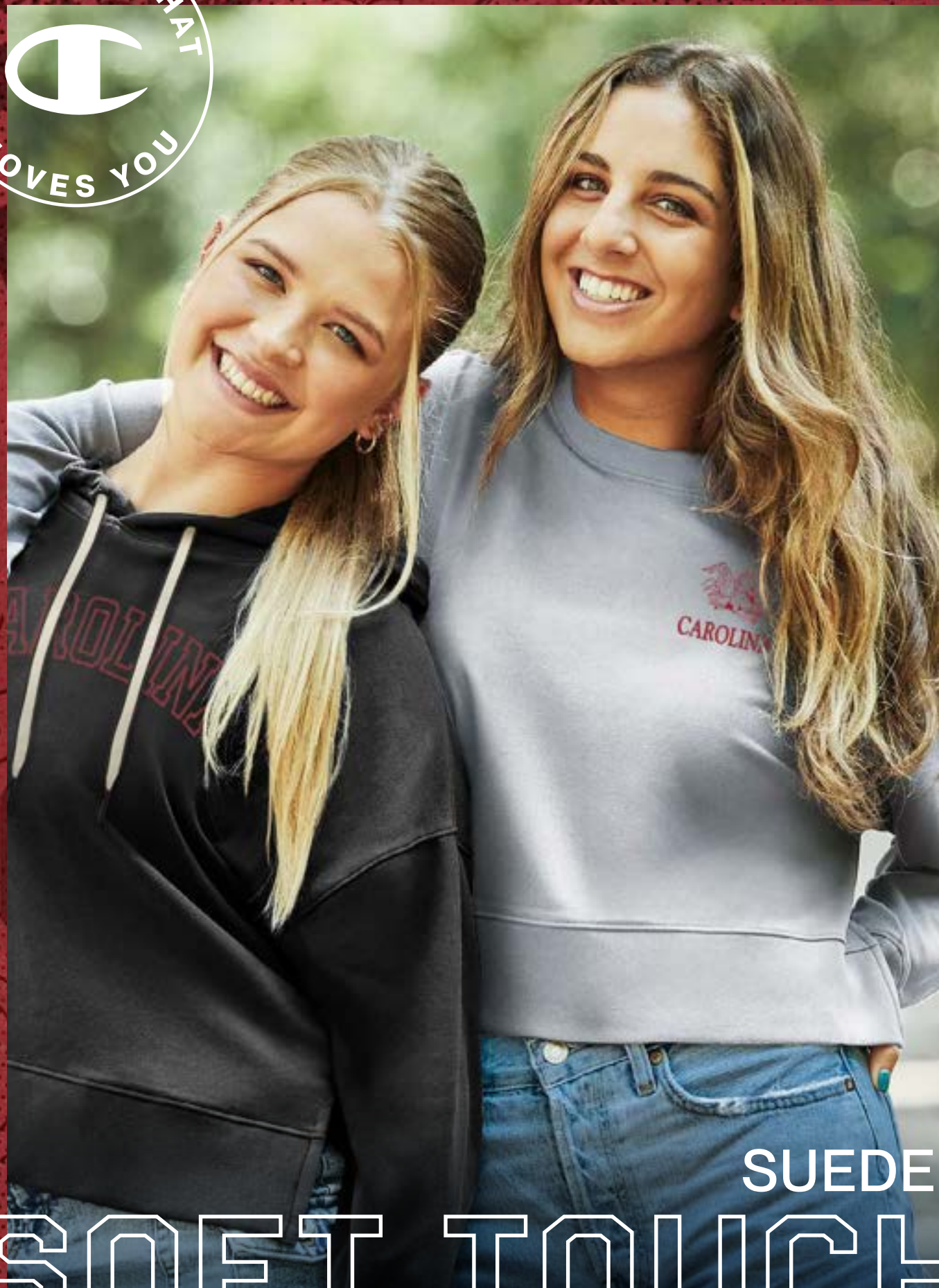
APC03831321
X2 / BA2 / WH, BK
APC03831294
X2 / LC / WH, BK



APC03814445
P1 / FC2 / PMS 202
APC03816204
P1 / VS / PMS 202



999 APC03832370 X1 FC2 950 AEC03833961 E LC



CHAMPION FALL 2024 COLLEGIATE

SUEDED SOFT TOUCH

NEW



NEW



CHAMPION FALL 2024 COLLEGIATE

CHAMPION WOMEN'S SUEDED TOUCH CREW

C4002 | XS - 2XL

- 88% Polyester, 12% Spandex Sueded fleece
- Set in self collar
- Dropped Shoulder
- Seaming down front/back of sleeve
- Striped twill Neck tape
- Self Cuff and Waistband
- Side vents
- Art #: 7010 AEC03832400 E FC



CHAMPION WOMEN'S SUEDED TOUCH HOOD

C4003 | XS - 2XL

- 88% Polyester, 12% Spandex Sueded fleece
- 2 piece Hood
- Dropped Shoulder
- Seaming down front/back of sleeve
- Striped twill Neck tape and drawcord
- Self Cuff and Waistband
- Side vents
- Art #: 999 APC03832370 X1 FC2





940 APC03831224 P2 FC2



▶▶▶ CHAMPION FALL 2024 COLLEGIATE

WOMEN'S REVERSE WEAVE

NEW



NEW



▶▶ CHAMPION FALL 2024 COLLEGIATE

WOMEN'S REVERSE WEAVE CROPPED CREW

C3007 | XS-2XL

- 80% cotton / 20% polyester heavyweight fleece
- 1x1 rib at collar, side panels and cuff
- Raw edge at hem
- Cropped Boyfriend fit
- Art #: **000 AEC03834249 3DET FC**



000 White



940 Silver Grey

WOMEN'S REVERSE WEAVE FLEECE HOOD

C3002 | XS-2XL

- 80% cotton / 20% polyester heavyweight fleece
- 1x1 rib at side panels, waistband and cuff
- Hood with drawcord
- "Boyfriend" fit
- Shorter length
- Art #: **940 AEC03815105 2A9 FC AEC03816514 E US**



940 Silver Grey

WOMEN'S REVERSE WEAVE



AEC03815105
2A9 / FC / RBW, RB, RB, RB, RB
AEC03816514
E / US / RB, WH, BK, WH



AEC03834249
3DET / FC / BKT, BK, BK, BK, BK, BK, RB



AEC03833993
E / FC / PCG, PCG, PCG



APC03831728
P1 / FC2 / PMS 202



APC03830299
P1 / FC2 / TMA



APC03831501
P1 / FC2 / BK



AEC03832400
E / FC / RB, RB



APC03831224
P2 / FC2 / BK, PMS 202



APC03831732
P2 / BA3 / BK, PMS 202
APC03831734
P2 / LC / BK, PMS 202



APC03834266
P2 / FC2 / PMS 202, BK



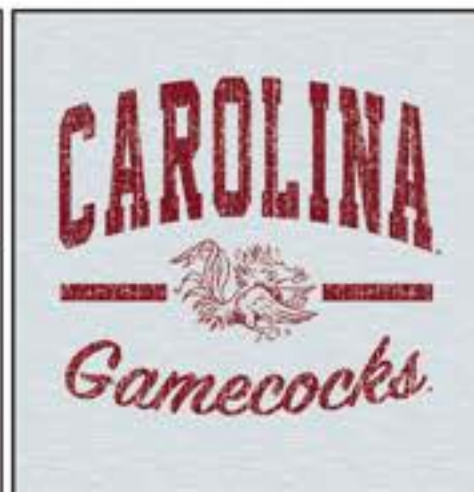
APC03831230
P4 / FC2 / BK, PMS 202, WH, OXG



APC03832374
P2 / FC1 / PMS 202, BK



APC03831227
P2 / FC3 / BK, PMS 202



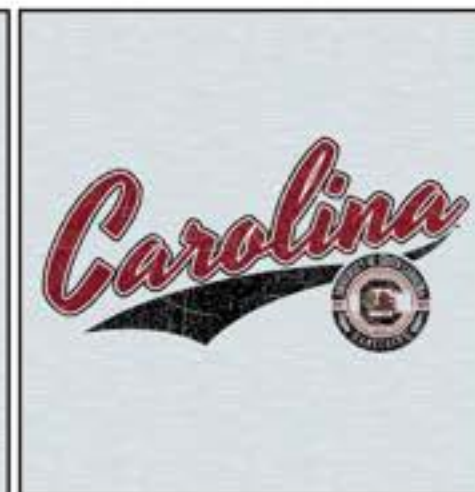
APC03831052
P1 / FC2 / PMS 202



APC03831039
P1 / FC2 / PMS 202



APC03831498
P1 / FC / BK



APC03832350
P3 / FC2 / WH, PMS 202, BK



APC03832370
P1 / FC2 / PMS 202



WOMEN'S TRIUMPH

CHAMPION TRIUMPH WOMEN'S FLEECE HOOD

C6204 | XS-2XL

- 47% polyester, 39% cotton, 14% rayon triblend fleece
- Rib cuffs & waistband
- 2 Piece hood
- Relaxed fit
- Modern length
- Kanga pocket
- Art #: **798 APC03815085 X2 FC2**



WOMEN'S TRIUMPH FLEECE PANTS

C6203 | XS-2XL

- 47% polyester, 39% cotton, 14% rayon
- 2x2 rib at cuffs
- Encased elastic at waistband
- 28" Inseam
- Art #: **190 AEC03813937 E LL**





WOMEN'S TRIUMPH LONG SLEEVE FLEECE CREW
C6200 | XS-2XL

- 47% polyester, 39% cotton, 14% rayon
- 2x2 rib at collar, cuffs, and waistband
- Slightly dropped shoulder for comfy girlfriend fit
- Shorter body length that sits right at the waistband
- Art #: **190 AEC03819998 E FC**



WOMEN'S TRI-BLEND V-NECK TEE
C6016 | XS-2XL

- 50% polyester / 37% cotton / 13% rayon jersey
- 1x1 rib at collar
- Set in short sleeve and relaxed body
- Ladder stitching at sleeve and bottom opening
- Art #: **190 APC03815073 X4 FC1**



GRAPHIC SHOP
WOMEN'S TRIUMPH



AEC03832737
 E / FC / MNY, PAR, NIK



AEC03819998
 E / FC / PAR



AEC03833344
 LC / E / MZE, NY



APC03832339
 X2 / FC1 / PMS 7406, NY



APC03815073
 X4 / FC1 / WH, CV, VAN, PMS 7406



APC03815085
 X2 / FC3 / PMS 7406, NY



AEC03813937
 E / LL / PAR, WH



APC03814424
 P1 / FC2 / MNY



APC03815920
 P2 / FC1 / MNY, POS



APC03771777
 X1 / FC3 / PMS 7406



APC03832345
 P1 / FC2 / NY



APC03833948
 X2 / FC2 / PMS 7406, WH



APC03834020
 X1 / FC2 / PMS 7406



APC03814669
 P1 / FC2 / MNY



APC03831132
 X1 / FC1 / PMS 7406



APC03830853
 X1 / FC / PMS 7406



APC03831133
 P2 / LC / BER, NY
 APC03831135
 P2 / BA4 / BER, NY



APC03834346
 P1 / LC / MNY



YOUTH COLLECTION



92 CS1285
Youth Champion
Powerblend® Full Zip



92 CS1271
Youth Champion
Powerblend® Hood



93 CS1221
Youth Champion
Powerblend® Crew



93 CP2027
Youth Champion
Powerblend® Jogger



94 CS5030
Youth Reverse
Weave Crew



94 CB1021
Youth Packable
Jacket



95 CT1081
Youth Short Sleeve
Jersey Tee



95 CT1751
Youth Long Sleeve
Jersey Tee



95 C82105
Youth Classic
Mesh Short

	XS	S	M	L	XL
AGE	4-5	6-7	7-8	10-12	14-16
HEIGHT	39" - 48"	45"-54"	51"-57"	54"-60"	57"-62"
WEIGHT	35-55 lbs	45-72 lbs	65-84 lbs	72-96 lbs	88-108 lbs

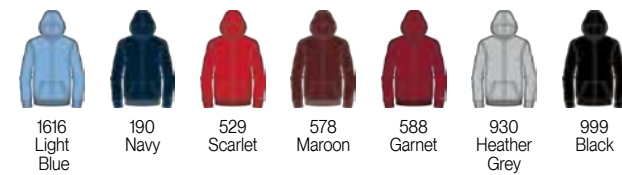
BACK GRAPHIC



YOUTH CHAMPION POWERBLEND® FULL ZIP

CS1285 | XS-XL

- 50% cotton / 50% polyester
- Double layer hood
- Covered zipper
- Kanga pocket
- Art #: **930 APC03815958 P1 LC APC03815959 P1 BA3**



YOUTH CHAMPION POWERBLEND® HOOD

CS1271 | XS-XL

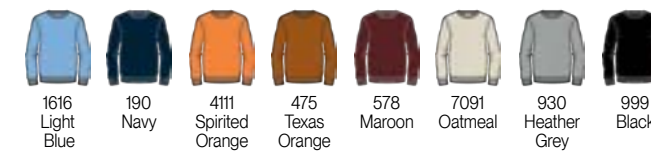
- 50% cotton / 50% polyester
- Art #: **588 APC03815957 ST3 FC2**



YOUTH CHAMPION POWERBLEND® CREW

CS1221 | S-XL

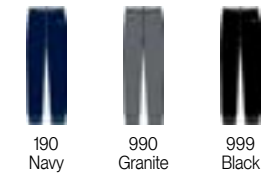
- 50% cotton / 50% polyester
- Art #: **999 APC03818470 X1 FC2 APC03818479 X1 SR**



YOUTH CHAMPION POWERBLEND® JOGGER

CP2027 | XS-XL

- 50% cotton / 50% polyester
- 1x1 rib at cuff and ankle length
- Side seam pocket bags
- Self fabric and elastic waistband
- Art #: **999 APC03815835 X2 LL**



BACK GRAPHIC

SOUTH CAROLINA
Gamecocks



YOUTH REVERSE WEAVE CREW

CS5030 | XS-XL

- 80% cotton / 20% polyester heavyweight fleece
- Double layer rib knit trim at neck, cuffs, waist and side panels
- Art #: **940 APC03815928 P3 FC2**



940
Silver
Grey

YOUTH PACKABLE JACKET

CB1021 | XS-XL

- 100% polyester micro poplin fabric with water resistant coating
- Open bottom
- Scuba collar with hood
- Can be packed into front pocket
- Specialty hang tag calls out packing capabilities
- Art #: **999 APC03817178 X2 LC APC03817179 X2 BA**



1616 Light Blue
190 Navy
536 Classic Red
578 Maroon
972 Graphite
999 Black



YOUTH SHORT SLEEVE JERSEY TEE

CT1081 | XS-XL

- 100% cotton jersey
- 950 is 90% cotton / 10% polyester and 990 is 50% cotton / 50% polyester
- Heat transfer back neck label
- Art #: **588 APC03817175 X2 FC2**



YOUTH LONG SLEEVE JERSEY TEE

CT1751 | XS-XL

- 100% cotton jersey
- 950 is 90% cotton / 10% polyester
- Heat transfer back neck label
- Art #: **950 APC03815936 P3 FC2 APC03815941 P2 SL**



YOUTH CLASSIC MESH SHORT

C82105 | S-XL

- 100% polyester mesh
- Encased elastic waistband
- Side pockets and vents
- Art #: **999 APC03730761 X2 LL**



GRAPHIC SHOP
YOUTH COLLECTION



APC03817179
X2 / FC2 / WH, PMS 202



APC03817175
X2 / FC2 / BK, WH



APC03815835
X2 / LL / WH, PMS 202



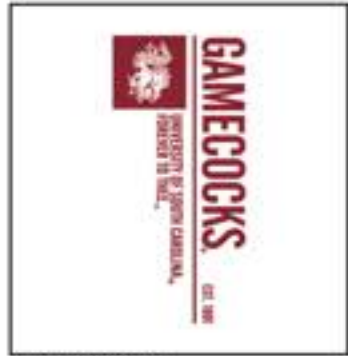
APC03831744
X2 / FC2 / BK, WH



APC03833362
X2 / FC2 / WH, BK



APC03831354
X3 / FC2 / WH, BK, OXG



APC03833375
P1 / VC / PMS 202



APC03815928
P3 / FC2 / PMS 202, BK, WH



APC03832351
X2 / FC2 / WH, BK



APC03831746
X2 / FC2 / BK, WH



APC03831233
P2 / FC2 / BK, PMS 202



APC03831548
X2 / FC2 / TMA, WH



APC03813941
P3 / FC2 / PMS 202, SI, BK



APC03831231
X2 / FC2 / WH, BK



APC03815957
ST3 / FC2 / STMD, STOX, STWH



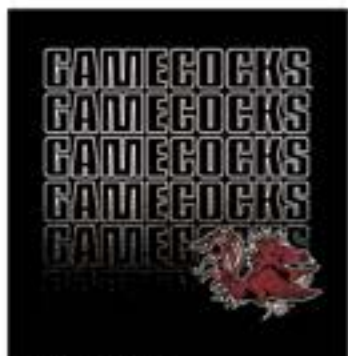
APC03833366
P2 / FC2 / PMS 202, BK



APC03831762
P3 / FC2 / TMA, BK, HGY



APC03815958
P1 / LC / PMS 202
APC03815959
P1 / BA3 / PMS 202



APC03813939
X2 / FC2 / PMS 202, WH



APC03832368
X2 / FC2 / WH, PMS 202



APC03832352
X2 / FC1 / WH, PMS 202



APC03818470
X1 / FC2 / PMS 202
APC03818479
X1 / SR / PMS 202



APC03815936
P3 / FC2 / PMS 202, BK, WH
APC03815941
P2 / SL / PMS 202, BK



APC03834259
X2 / FC2 / WH, BK
APC03834264
X2 / SL / WH, BK

COLOR GUIDE: GARMENT, INK & THREAD

INK-Light Tonal=N/A
INK-Color on Color=WH
INK-Dark Tonal=SI

THREAD-Light Tonal=N/A
THREAD-Color on Color=WH
THREAD-Dark Tonal=DS

000 WHITE

INK-Light Tonal=N/A
INK-Color on Color=ACA
INK-Dark Tonal=CLR

THREAD-Light Tonal=N/A
THREAD-Color on Color=RB
THREAD-Dark Tonal=N/A

539 CARDINAL

INK-Light Tonal=MA
INK-Color on Color=DMA
INK-Dark Tonal=N/A

THREAD-Light Tonal=N/A
THREAD-Color on Color=RW
THREAD-Dark Tonal=N/A

578 MAROON

INK-Light Tonal=DCT
INK-Color on Color=VC
INK-Dark Tonal=DMA

THREAD-Light Tonal=CAR
THREAD-Color on Color=RB
THREAD-Dark Tonal=RW

588 GARNET

INK-Light Tonal=SGP
INK-Color on Color=WGP
INK-Dark Tonal=N/A

THREAD-Light Tonal=AFV
THREAD-Color on Color=INK
THREAD-Dark Tonal=N/A

630 PURPLE

INK-Light Tonal=BRE
INK-Color on Color=BAY
INK-Dark Tonal=TBL

THREAD-Light Tonal=WAT
THREAD-Color on Color=BAY
THREAD-Dark Tonal=TBL

1045 BLUE BREEZE

INK-Light Tonal=ICE
INK-Color on Color=PMS2165
INK-Dark Tonal=WIN

THREAD-Light Tonal=ICE
THREAD-Color on Color=SBR
THREAD-Dark Tonal=TI

1103 WILDFLOWER PALE BLUE

INK-Light Tonal=CG
INK-Color on Color=CHB
INK-Dark Tonal=WIN

THREAD-Light Tonal=MDT
THREAD-Color on Color=WAT
THREAD-Dark Tonal=TI

1134 DENIM JACKET BLUE

INK-Light Tonal=MDT
INK-Color on Color=DBL
INK-Dark Tonal=BAY

THREAD-Light Tonal=CHB
THREAD-Color on Color=DBL
THREAD-Dark Tonal=BAY

1616 LIGHT BLUE

INK-Light Tonal=AFV
INK-Color on Color=WGP
INK-Dark Tonal=N/A

THREAD-Light Tonal=MTP
THREAD-Color on Color=DP
THREAD-Dark Tonal=N/A

680 C. PURPLE

INK-Light Tonal=N/A
INK-Color on Color=DP
INK-Dark Tonal=N/A

THREAD-Light Tonal=MTP
THREAD-Color on Color=INK
THREAD-Dark Tonal=N/A

695 DEEP PURPLE

INK-Light Tonal=N/A
INK-Color on Color=PMS 7444
INK-Dark Tonal=BV

THREAD-Light Tonal=N/A
THREAD-Color on Color=TLR
THREAD-Dark Tonal=CVI

6017 URBAN LILAC

INK-Light Tonal=N/A
INK-Color on Color=FRT
INK-Dark Tonal=TAU

THREAD-Light Tonal=N/A
THREAD-Color on Color=OAK
THREAD-Dark Tonal=EA

7010 NEW COCOA BUTTER

INK-Light Tonal=BAY
INK-Color on Color=TBL
INK-Dark Tonal=NY

THREAD-Light Tonal=BAY
THREAD-Color on Color=MN
THREAD-Dark Tonal=CAL

1818 ROYAL

INK-Light Tonal=WIN
INK-Color on Color=MNY
INK-Dark Tonal=N/A

THREAD-Light Tonal=WIN
THREAD-Color on Color=NY
THREAD-Dark Tonal=N/A

188 NAVY HEATHER

INK-Light Tonal=WIN
INK-Color on Color=MNY
INK-Dark Tonal=N/A

THREAD-Light Tonal=WIN
THREAD-Color on Color=NY
THREAD-Dark Tonal=N/A

190 NAVY

INK-Light Tonal=WIN
INK-Color on Color=SG
INK-Dark Tonal=PMS 5503

THREAD-Light Tonal=N/A
THREAD-Color on Color=РАН
THREAD-Dark Tonal=SG

2086 NIMBUS GREEN

INK-Light Tonal=WH
INK-Color on Color=ASH
INK-Dark Tonal=OXG

THREAD-Light Tonal=WH
THREAD-Color on Color=ST
THREAD-Dark Tonal=PGY

7091 OATMEAL HEATHER

INK-Light Tonal=CHM
INK-Color on Color= PMS 2318
INK-Dark Tonal= N/A

Thread-Light Tonal= AZG
Thread-Color on Color= BRS
Thread-Dark Tonal= BR

7202 BRIEFLY BROWN

INK-Light Tonal=N/A
INK-Color on Color= VAN
INK-Dark Tonal= ASH

Thread-Light Tonal= N/A
Thread-Color on Color= CV
Thread-Dark Tonal= N/A

740 WHITE ALABASTER

INK-Light Tonal=BZ
INK-Color on Color=DBR
INK-Dark Tonal=N/A

THREAD-Light Tonal=MCA
THREAD-Color on Color=WAL
THREAD-Dark Tonal=N/A

775 BROWN

INK-Light Tonal=N/A
INK-Color on Color=EME
INK-Dark Tonal=GR

THREAD-Light Tonal=N/A
THREAD-Color on Color=GR
THREAD-Dark Tonal=SMU

234 KELLY GREEN

INK-Light Tonal=EV
INK-Color on Color=DG
INK-Dark Tonal=N/A

THREAD-Light Tonal=BKG
THREAD-Color on Color=BTG
THREAD-Dark Tonal=N/A

256 DARK GREEN

INK-Light Tonal=EV
INK-Color on Color=DG
INK-Dark Tonal=N/A

THREAD-Light Tonal=BKG
THREAD-Color on Color=BTG
THREAD-Dark Tonal=N/A

285 FIELD GREEN

INK-Light Tonal=WIL
INK-Color on Color=PMS7763
INK-Dark Tonal=N/A

THREAD-Light Tonal=PGN
THREAD-Color on Color=MGN
THREAD-Dark Tonal=TYM

2009 CARGO OLIVE

INK-Light Tonal=N/A
INK-Color on Color=PMS7527
INK-Dark Tonal=BCH

THREAD-Light Tonal=CCH
THREAD-Color on Color=ST
THREAD-Dark Tonal=EA

798 PEBBLESTONE

INK-Light Tonal=N/A
INK-Color on Color=PMS2127
INK-Dark Tonal=WGD

THREAD-Light Tonal=N/A
THREAD-Color on Color=N/A
THREAD-Dark Tonal=DCM

9028 SILVER SPOTLIGHT

INK-Light Tonal=N/A
INK-Color on Color=OXG
INK-Dark Tonal=MD

THREAD-Light Tonal=N/A
THREAD-Color on Color=NIK
THREAD-Dark Tonal=DGF

930 HEATHER GREY

INK-Light Tonal=N/A
INK-Color on Color=OXG
INK-Dark Tonal=MD

THREAD-Light Tonal=N/A
THREAD-Color on Color=NIK
THREAD-Dark Tonal=DGF

939 ACTIVE GREY

INK-Light Tonal=N/A
INK-Color on Color=HNY
INK-Dark Tonal=CI

THREAD-Light Tonal=N/A
THREAD-Color on Color=N/A
THREAD-Dark Tonal=N/A

3012 BOLD HYTOP GOLD

INK-Light Tonal=N/A
INK-Color on Color=SGO
INK-Dark Tonal=GO

THREAD-Light Tonal=N/A
THREAD-Color on Color=PAR
THREAD-Dark Tonal=MYW

338 YELLOW CAB

INK-Light Tonal=N/A
INK-Color on Color=GO
INK-Dark Tonal=KA

THREAD-Light Tonal=N/A
THREAD-Color on Color=MYW
THREAD-Dark Tonal=KA

377 C. GOLD

INK-Light Tonal=N/A
INK-Color on Color=RN
INK-Dark Tonal=STG

THREAD-Light Tonal=N/A
THREAD-Color on Color=TN
THREAD-Dark Tonal=SW

373 VEGAS GOLD

INK-Light Tonal=N/A
INK-Color on Color=N/A
INK-Dark Tonal=OXG

THREAD-Light Tonal=N/A
THREAD-Color on Color=CSI
THREAD-Dark Tonal=NIK

940 SILVER GREY

INK-Light Tonal=OXG
INK-Color on Color=MD
INK-Dark Tonal=CH

THREAD-Light Tonal=NIK
THREAD-Color on Color=DGF
THREAD-Dark Tonal=CH

948 GUNSMOKE HEATHER

INK-Light Tonal=N/A
INK-Color on Color=OXG
INK-Dark Tonal=MD

THREAD-Light Tonal=N/A
THREAD-Color on Color=NIK
THREAD-Dark Tonal=DGF

950 OXFORD HEATHER

INK-Light Tonal=N/A
INK-Color on Color = OXG
INK-Dark Tonal = MD

THREAD-Light Tonal= N/A
THREAD-Color on Color = NIK
THREAD-Dark Tonal = DGF

955 HERITAGE GREY

INK-Light Tonal=N/A
INK-Color on Color=OR
INK-Dark Tonal=NO

THREAD-Light Tonal=N/A
THREAD-Color on Color=MND
THREAD-Dark Tonal=RU

465 ORANGE

INK-Light Tonal=SAF
INK-Color on Color=TO
INK-Dark Tonal=N/A

THREAD-Light Tonal=HAR
THREAD-Color on Color=TXT
THREAD-Dark Tonal=TB

475 TEXAS ORANGE

INK-Light Tonal=WGO
INK-Color on Color=PMS151
INK-Dark Tonal=N/A

THREAD-Light Tonal=MNG
THREAD-Color on Color=DO
THREAD-Dark Tonal=MND

4111 SPIRITED ORANGE

INK-Light Tonal=N/A
INK-Color on Color=MEM
INK-Dark Tonal=FUS

THREAD-Light Tonal=CUP
THREAD-Color on Color=CMB
THREAD-Dark Tonal=PK

5031 FEATHER PINK

INK-Light Tonal=N/A
INK-Color on Color=PER
INK-Dark Tonal=BK

THREAD-Light Tonal=NIK
THREAD-Color on Color=DG
THREAD-Dark Tonal=BK

956 TITANIUM

INK-Light Tonal=HGY
INK-Color on Color=MD
INK-Dark Tonal=CH

THREAD-Light Tonal=NIK
THREAD-Color on Color=DGF
THREAD-Dark Tonal=CH

972 GRAPHITE

INK-Light Tonal=MD
INK-Color on Color=CH
INK-Dark Tonal=BK

THREAD-Light Tonal=NIK
THREAD-Color on Color=CH
THREAD-Dark Tonal=BK

990 GRANITE HEATHER

INK-Light Tonal=HGY
INK-Color on Color=N/A
INK-Dark Tonal=BK

THREAD-Light Tonal=NIK
THREAD-Color on Color=DGF
THREAD-Dark Tonal=BK

9901 GRANITE

INK-Light Tonal=N/A
INK-Color on Color=FUS
INK-Dark Tonal=POS

THREAD-Light Tonal=CMB
THREAD-Color on Color=FUS
THREAD-Dark Tonal=CSB

5101 MOONLIGHT MAUVE

INK-Light Tonal=N/A
INK-Color on Color=FUS
INK-Dark Tonal=POS

THREAD-Light Tonal=CMB
THREAD-Color on Color=FUS
THREAD-Dark Tonal=CSB

5108 HEIRLOOM PINK

INK-Light Tonal=N/A
INK-Color on Color=SCR
INK-Dark Tonal=SRD

THREAD-Light Tonal=N/A
THREAD-Color on Color=RD
THREAD-Dark Tonal=MA

529 SCARLET

INK-Light Tonal=N/A
INK-Color on Color=CR
INK-Dark Tonal=ACA

THREAD-Light Tonal=RD
THREAD-Color on Color=CR
THREAD-Dark Tonal=CA

536 CLASSIC RED

INK-Light Tonal=CH
INK-Color on Color=BK
INK-Dark Tonal=N/A

THREAD-Light Tonal=DGF
THREAD-Color on Color=BK
THREAD-Dark Tonal=N/A

999 BLACK

Champion®

CHAMPION
KNITWEAR
CO.

Carolina Gamecocks
SOUTH CAROLINA

Fighting
Gamecocks



C

U of SC

AUTHENTIC
SIR
BIG
SPUR
GAMECOCK

GAMECOCKS

USC

UNIVERSITY OF SOUTH CAROLINA



USC

CHAMPION FALL 2024 COLLEGIATE

9700 Commerce Parkway Lenexa, KS 66219
www.gearforsports.com 888 800 2529 913 693 3996
All designs remain the property of GEAR FOR SPORTS®.
A HanesBrands Company

GEAR FOR SPORTS® is a fully Accredited Participating Company
with the FLA. This non-profit group is dedicated to improving
conditions in factories worldwide. We are committed to FLA labor
standards throughout our entire supply chain.

24FA_CC_CATALOG



© 2023 HANESBRANDS INC. ALL RIGHTS RESERVED